

1

ENCLOSURES

Contents

| Manufacturer | Page No |
|--------------|---------|
|--------------|---------|

Plastic / GRP Enclosures

| | |
|--------------------|------|
| ABB | 1.3 |
| Gewiss | 1.4 |
| Schneider Electric | 1.5 |
| Fibox | 1.8 |
| Rittal | 1.12 |

Industrial Boxes - Metal/Stainless Steel/ Aluminium/ATEX

| | |
|--------------------|------|
| Schneider Electric | 1.13 |
| Rittal | 1.14 |
| Weidmuller | 1.16 |

Wall Mount Mild Steel Enclosures

| | |
|--------------------|------|
| Schneider Electric | 1.18 |
| Rittal | 1.19 |

Wall Mount Stainless Steel Enclosures

| | |
|--------------------|------|
| Schneider Electric | 1.20 |
| Rittal | 1.21 |

Floor Standing Mild Steel Enclosures

| | |
|--------------------|------|
| Schneider Electric | 1.22 |
| Rittal | 1.24 |

Floor Standing Stainless Steel Enclosures

| | |
|--------------------|------|
| Schneider Electric | 1.29 |
| Rittal | 1.31 |

Consoles

| | |
|--------------------|------|
| Schneider Electric | 1.32 |
| Rittal | 1.32 |

Hazardous Areas/EMC/Anti-Corrosive Enclosures

| | |
|--------------------|------|
| Schneider Electric | 1.33 |
| Weidmuller | 1.35 |

Climate Control

| | |
|--------------------|------|
| Schneider Electric | 1.36 |
| Rittal | 1.38 |

Accessories

| | |
|--------------------|------|
| Schneider Electric | 1.40 |
| Rittal | 1.41 |

Adaptable Boxes - Thermoplastic

IP44/55

Thermoplastic enclosures come with glands.

| IP44 Enclosure | | | |
|--------------------------------|--------|--------|----------|
| H (mm) | W (mm) | D (mm) | Part No. |
| Round with Press On Lid | | | |
| Ø65 | 35 | | 00800 |
| Ø80 | 40 | | 00802 |
| Screw On Lid | | | |
| 65 | 65 | 32 | 00808 |
| 80 | 80 | 40 | 00810 |
| 100 | 100 | 50 | 00816 |
| 100 | 100 | 80 | 00821 |
| 105 | 70 | 50 | 00820 |
| Low Screw On Lid | | | |
| 153 | 110 | 66 | 00822 |
| 160 | 135 | 77 | 00824 |
| 220 | 170 | 80 | 00826 |
| 310 | 240 | 110 | 00828 |
| High Screw On Lid | | | |
| 160 | 135 | 150 | 00830 |
| 220 | 170 | 150 | 00832 |
| 310 | 240 | 160 | 00834 |

| IP55 (Smooth Finish) Enclosure | | | |
|--------------------------------------|--------|--------|----------|
| H (mm) | W (mm) | D (mm) | Part No. |
| Low Screw On Lid | | | |
| 100 | 100 | 50 | 00846 |
| 100 | 100 | 80 | 00851 |
| 105 | 70 | 50 | 00850 |
| 153 | 110 | 66 | 00852 |
| 160 | 135 | 77 | 00854 |
| 220 | 170 | 80 | 00856 |
| 310 | 240 | 110 | 00858 |
| Transparent Low Screw On Lid | | | |
| 153 | 110 | 66 | 00872 |
| 160 | 135 | 70 | 00874 |
| 220 | 170 | 80 | 00876 |
| 220 | 170 | 150 | 00882 |
| 310 | 240 | 110 | 00878 |
| Transparent High Screw On Lid | | | |
| 160 | 135 | 150 | 00880 |
| 310 | 240 | 160 | 00884 |
| High Screw On Lid | | | |
| 160 | 135 | 150 | 00860 |
| 220 | 170 | 150 | 00862 |
| 310 | 240 | 160 | 00864 |

Adaptable Boxes - in Polycarbonate

IP65

| IP65 (Smooth Finish) Enclosure | | | | |
|--------------------------------|--------|--------|--------------------|-----------------------------------|
| H (mm) | W (mm) | D (mm) | Enclosure Part No. | Mounting Plate Aluminium Part No. |
| 220 | 140 | 140 | 12804 | 12842 |
| 220 | 205 | 140 | 12808 | 12844 |
| 220 | 275 | 140 | 12812 | 12845 |
| 370 | 275 | 140 | 12814 | 12846 |
| 570 | 275 | 140 | 12816 | 12847 |
| 570 | 380 | 140 | 12818 | 12848 |

| Accessories | | |
|------------------------|---------------|----------|
| Description | For Enclosure | Part No. |
| Wall mounting brackets | Fits all | 12858 |

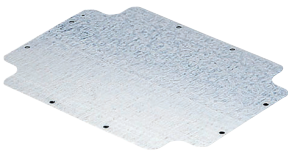




Junction Boxes - Thermoplastic

IP56

Thermoplastic enclosures come with glands.



| Junction Boxes with Plain Screwed Lid | | | |
|---------------------------------------|--------|--------|----------|
| L (mm) | W (mm) | D (mm) | Part No. |
| 100 | 100 | 50 | GW44204 |
| 150 | 110 | 70 | GW44206 |
| 190 | 140 | 70 | GW44207 |
| 240 | 190 | 90 | GW44208 |
| 300 | 220 | 120 | GW44209 |
| 380 | 300 | 120 | GW44210 |
| 460 | 380 | 120 | GW44211 |

| Junction Boxes with Deep Screwed Lid | | | |
|--------------------------------------|--------|--------|----------|
| L (mm) | W (mm) | D (mm) | Part No. |
| 100 | 100 | 120 | GW44214 |
| 150 | 110 | 140 | GW44216 |
| 190 | 140 | 140 | GW44217 |
| 240 | 190 | 160 | GW44218 |
| 300 | 220 | 180 | GW44219 |
| 380 | 300 | 180 | GW44220 |
| 460 | 380 | 180 | GW44221 |

| Metal Mounting Plates | | |
|-----------------------|--------|----------|
| Dimensions | | |
| H (mm) | W (mm) | Part No. |
| 190 | 140 | GW44615 |
| 240 | 190 | GW44616 |
| 300 | 220 | GW44617 |
| 380 | 300 | GW44618 |
| 460 | 380 | GW44619 |

Thalassa TBS Series

For protection of small size components, requiring little intervention or maintenance make Thalassa TBS-TBP your first choice. It's ideal for applications requiring protection against dust and water in any environment - the simple and quick solution to any installation.

IP66/IK7



Technical Data

ABS plastic boxes with plain covers
 Cover locking by 4 plastic captive screws
 Glow wire resistance: 650°C according to IEC 60695-2-11
 Usage temperature: -25°C to 60°C
 Installation temperature: -15°C to 40°C

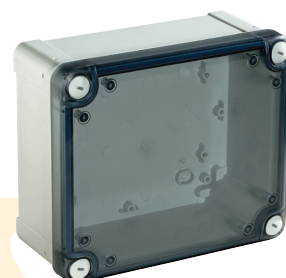
| External Dimensions | | | Internal Dimensions | | | Cover | | Part No. |
|---------------------|--------|--------|---------------------|--------|--------|---------------|----------------|---------------|
| H (mm) | W (mm) | D (mm) | H (mm) | W (mm) | D (mm) | Low (10-20mm) | High (40-80mm) | |
| 74 | 74 | 54 | 65 | 65 | 47 | • | | NSYTBS775 |
| 116 | 116 | 62 | 105 | 105 | 55 | • | | NSYTBS11116 |
| 138 | 93 | 72 | 125 | 80 | 65 | • | | NSYTBS1397 |
| 164 | 121 | 87 | 150 | 105 | 80 | • | | NSYTBS16128 |
| 192 | 121 | 87 | 175 | 105 | 80 | • | | NSYTBS19128 |
| 192 | 164 | 87 | 175 | 150 | 80 | • | | NSYTBS19168 |
| 192 | 164 | 105 | 175 | 150 | 100 | | • | NSYTBS191610H |
| 241 | 192 | 87 | 225 | 175 | 80 | • | | NSYTBS24198 |
| 241 | 192 | 105 | 225 | 175 | 100 | | • | NSYTBS241910H |
| 241 | 192 | 128 | 225 | 175 | 120 | | • | NSYTBS241912H |
| 291 | 241 | 87 | 275 | 225 | 80 | • | | NSYTBS29248 |
| 341 | 291 | 128 | 325 | 275 | 120 | • | | NSYTBS342912 |

*More options are available included sizes, transparent covers and Thalassa TBP version of polycarbonate boxes. Please ask us for more information.

| Accessories | | |
|---|-----------------------------------|-----------------------------|
| Description | Dimensions (mm) | Part No. |
| Fixing by means of Ø4mm self-tapping screws(not included), Pozidriv and slotted head, ref NSYAMFSTB | Supplied | DIN 35x7.5 rail for box 116 |
| | without screws | DIN 35x7.5 rail for box 164 |
| | | DIN 35x7.5 rail for box 192 |
| | | DIN 35x7.5 rail for box 241 |
| | | DIN 35x7.5 rail for box 291 |
| | | DIN 35x7.5 rail for box 341 |
| Installation by a single screw with the box closed & equipped | Set of 4 plastic wall fixing lugs | NSYAEFTB |
| Ø4 x 10mm Pack of 100 screws | Screws | NSYAMFSTB |

*More accessories are available to compliment this range, please ask us for more information.

| External Dimensions | | | Internal Dimensions | | | Part No. |
|---------------------|--------|--------|---------------------|--------|--------|---------------|
| H (mm) | W (mm) | D (mm) | H (mm) | W (mm) | D (mm) | |
| 138 | 93 | 72 | 125 | 80 | 65 | NSYTBS1397T |
| 164 | 121 | 87 | 150 | 105 | 80 | NSYTBS16128T |
| 192 | 121 | 87 | 175 | 105 | 80 | NSYTBS19128T |
| 192 | 164 | 87 | 175 | 150 | 80 | NSYTBS19168T |
| 241 | 192 | 87 | 225 | 175 | 80 | NSYTBS24198T |
| 241 | 194 | 107 | 225 | 175 | 100 | NSYTBS241910T |
| 291 | 241 | 88 | 275 | 225 | 80 | NSYTBS29248T |
| 291 | 241 | 128 | 275 | 225 | 120 | NSYTBS292412T |
| 341 | 291 | 128 | 325 | 275 | 120 | NSYTBS342912T |



Thalassa PLM Series

IP66/IK10

Arrange of smooth finished, ABS/PC or laminated glass-fibre reinforced polyester, monobloc enclosures.

Technical Data

Material: Glass fibre reinforced polycarbonate
Finish: RAL 7035



ABS Industrial Box with Plain or Transparent Door

| External Dimensions | | | ABS/PC Wall-mounting | | Polyester Wall-Mounting | |
|---------------------|--------|--------|----------------------|---------------------------|-------------------------|---------------------------|
| H (mm) | W (mm) | D (mm) | Plain Door Part No. | Transparent Door Part No. | Plain Door Part No. | Transparent Door Part No. |
| 310 | 215 | 160 | NSYPLM32G | NSYPLM32TG | | |
| 308 | 255 | 160 | | | NSYPLM3025G | NSYPLM3025TG |
| 430 | 330 | 200 | | | NSYPLM43G | NSYPLM43TG |
| 530 | 430 | 200 | | | NSYPLM54G | NSYPLM54TG |
| 647 | 436 | 250 | | | NSYPLM64G | NSYPLM64TG |
| 747 | 536 | 300 | | | NSYPLM75G | NSYPLM75TG |
| 847 | 636 | 300 | | | NSYPLM86G | NSYPLM86TG |
| 1056 | 852 | 350 | | | NSYPLM108G | NSYPLM108TG |

Transparent doors IK08.

Plain Mounting Plates

| Dimensions | | | Part No. |
|------------|--------|--|-----------|
| H (mm) | W (mm) | | |
| 300 | 200 | | NSYMM32 |
| 300 | 250 | | NSYMM3025 |
| 300 | 400 | | NSYMM43 |
| 600 | 400 | | NSYMM64 |
| 700 | 500 | | NSYMM75 |
| 800 | 600 | | NSYMM86 |
| 1000 | 800 | | NSYMM108 |

Internal Door

| To Fit Enclosure | | | |
|------------------|--------|--------|---------------|
| H (mm) | W (mm) | D (mm) | Part No. |
| 308 | 255 | 160 | NSYPA3025PLMG |
| 430 | 330 | 200 | NSYPAP43G |
| 530 | 430 | 200 | NSYPAP54G |
| 647 | 436 | 250 | NSYPAP64G |
| 747 | 536 | 300 | NSYPAP75G |
| 847 | 636 | 300 | NSYPAP86G |
| 1056 | 852 | 350 | NSYPAP108G |

Wall Fixing Lugs

| Material | Part No. |
|-----------------|----------------------------|
| Polyamide | NSYFPPLMG |
| | NSYFPPLM32G ⁽¹⁾ |
| Stainless steel | NSYFPXPLM |

⁽¹⁾ Exclusive for enclosures ref. NSYPLM32G and NSYPLM32TG.

Thalassa PLA Series

The floor-standing enclosures are made from polyester reinforced with fibreglass, moulded by hot compression. High resistance to corrosion in harsh environments, it maintains its mechanical and insulation properties.

Technical Data

Material: Glass Fibre Reinforced Polycarbonate
 Finish: RAL 7035

IP65/IK10



Polyester Floor-Standing Enclosures with Plain Door

| External Dimensions | | | Completely Sealed Enclosures | |
|---------------------|--------|--------|------------------------------|---------------------|
| H (mm) | W (mm) | D (mm) | No. Of Doors | Plain Door Part No. |
| 500 | 500 | 320 | 1 | NSYPLA553G |
| 500 | 500 | 420 | 1 | NSYPLA554G |
| 500 | 750 | 320 | 1 | NSYPLA573G |
| 500 | 750 | 420 | 1 | NSYPLA574G |
| 500 | 1000 | 320 | 2 | NSYPLA5103G |
| 500 | 1000 | 420 | 2 | NSYPLA5104G |
| 500 | 1250 | 320 | 2 | NSYPLA5123G |
| 500 | 1250 | 420 | 2 | NSYPLA5124G |
| 750 | 500 | 320 | 1 | NSYPLA753G |
| 750 | 500 | 420 | 1 | NSYPLA754G |
| 750 | 750 | 320 | 1 | NSYPLA773G |
| 750 | 750 | 420 | 1 | NSYPLA774G |
| 750 | 750 | 320 | 1 | NSYPLA776G |
| 750 | 1000 | 420 | 2 | NSYPLA7103G |
| 750 | 1000 | 320 | 2 | NSYPLA7104G |
| 750 | 1250 | 420 | 2 | NSYPLA7123G |
| 750 | 1250 | 320 | 2 | NSYPLA7124G |
| 1000 | 500 | 420 | 1 | NSYPLA1053G |
| 1000 | 500 | 320 | 1 | NSYPLA1054G |
| 1000 | 750 | 420 | 1 | NSYPLA1073G |
| 1000 | 750 | 320 | 1 | NSYPLA1074G |
| 1000 | 1000 | 420 | 2 | NSYPLA10103G |
| 1000 | 1000 | 320 | 2 | NSYPLA10104G |
| 1000 | 1250 | 420 | 2 | NSYPLA10123G |
| 1000 | 1250 | 320 | 2 | NSYPLA10124G |
| 1250 | 500 | 420 | 1 | NSYPLA1253G |
| 1250 | 500 | 320 | 1 | NSYPLA1254G |
| 1250 | 750 | 420 | 1 | NSYPLA1273G |
| 1250 | 750 | 320 | 1 | NSYPLA1274G |
| 1250 | 750 | 420 | 1 | NSYPLA1276G |
| 1250 | 1000 | 320 | 2 | NSYPLA12103G |
| 1250 | 1000 | 420 | 2 | NSYPLA12104G |
| 1250 | 1250 | 320 | 2 | NSYPLA12123G |
| 1250 | 1250 | 420 | 2 | NSYPLA12124G |
| 1250 | 1250 | 320 | 2 | NSYPLA12126G |
| 1500 | 500 | 420 | 1 | NSYPLA1553G |
| 1500 | 500 | 320 | 1 | NSYPLA1554G |
| 1500 | 750 | 420 | 1 | NSYPLA1573G |
| 1500 | 750 | 320 | 1 | NSYPLA1574G |
| 1500 | 750 | 420 | 1 | NSYPLA1576G |
| 1500 | 1000 | 320 | 2 | NSYPLA15103G |
| 1500 | 1000 | 420 | 2 | NSYPLA15104G |
| 1500 | 1250 | 320 | 2 | NSYPLA15123G |
| 1500 | 1250 | 420 | 2 | NSYPLA15124G |
| 1500 | 1250 | 320 | 2 | NSYPLA15126G |
| 2000 | 750 | 420 | 1 | NSYPLA2074G |

Transparent doors available on request.

Plain Mounting Plates

| Dimensions | | Part No. |
|------------|--------|---------------------|
| H (mm) | W (mm) | |
| 500 | 500 | NSYPMM55 |
| 500 | 750 | NSYPMM75 |
| 500 | 1000 | NSYPMM510 |
| 500 | 1250 | NSYPMM55 + NSYPMM75 |
| 750 | 500 | NSYPMM75 |
| 750 | 750 | NSYPMM77 |
| 750 | 1000 | NSYPMM710 |
| 750 | 1250 | NSYPMM712 |
| 1000 | 500 | NSYPMM105 |
| 1000 | 750 | NSYPMM107 |
| 1000 | 1000 | NSYPMM1010 |
| 1000 | 1250 | NSYPMM1012 |
| 1250 | 500 | NSYPMM125 |
| 1250 | 750 | NSYPMM127 |
| 1250 | 1000 | NSYPMM1210 |
| 1250 | 1250 | NSYPMM1212 |
| 1500 | 500 | NSYPMM155 |
| 1500 | 750 | NSYPMM157 |
| 1500 | 1000 | NSYPMM1510 |
| 1500 | 1250 | NSYPMM1512 |
| 2000 | 750 | NSYPMM207 |

FIBOX

Enclosing innovations



ARCA

Polycarbonate cabinets, 14 sizes, key locks, c/w mounting Plate.

IP66/IK07

Technical Data

| | |
|--------------------|--------------------------------------|
| Material: | Glass fibre reinforced polycarbonate |
| Finish: | RAL 7035 |
| Temperature range: | -40°C to + 80°C (continuous use) |
| Flammability: | UL94 5VA |
| Approvals: | ROHS |

Portrait Version

| Dimensions | | | Enclosure Part No. |
|------------|--------|--------|--------------------|
| H (mm) | W (mm) | D (mm) | |
| 300 | 200 | 150 | ARCA 302015 |
| 400 | 300 | 150 | ARCA 403015 |
| 400 | 300 | 210 | ARCA 403021 |
| 500 | 400 | 210 | ARCA 504021 |
| 600 | 400 | 210 | ARCA 604021 |
| 700 | 500 | 300 | ARCA 705030 |
| 800 | 600 | 300 | ARCA 806030 |

Landscape Version

| Dimensions | | | Enclosure Part No. |
|------------|--------|--------|--------------------|
| H (mm) | W (mm) | D (mm) | |
| 300 | 400 | 150 | ARCA 304015 |
| 300 | 400 | 210 | ARCA 304021 |
| 400 | 500 | 210 | ARCA 405021 |
| 400 | 600 | 210 | ARCA 406021 |
| 500 | 700 | 300 | ARCA 507030 |
| 600 | 800 | 300 | ARCA 608030 |

Window Version

| Dimensions | | | Enclosure Part No. |
|------------|--------|--------|--------------------|
| H (mm) | W (mm) | D (mm) | |
| 400 | 300 | 210 | ARCA 403021W |
| 500 | 400 | 210 | ARCA 504021W |
| 600 | 400 | 210 | ARCA 604021W |
| 700 | 500 | 300 | ARCA 705030W |
| 800 | 600 | 300 | ARCA 806030W |
| 600 | 800 | 300 | ARCA 608030 |

Accessories

DIN Rail Frame Sets

| Description | Part No. |
|--|-----------------|
| DIN rail frame set • 1 row x 11 modules, for size 200x300x150 | DRS ARCA 203015 |
| DIN rail frame set • 1 row x 5 modules, for size 300x200x150 | DRS ARCA 302015 |
| DIN rail frame set • 1 row x 16 modules, for size 300x400x150 | DRS ARCA 304015 |
| DIN rail frame set • 1 row x 16 modules, for size 300x400x210 | DRS ARCA 304021 |
| DIN rail frame set • 2 rows x 11 modules, for size 400x300x150 | DRS ARCA 403015 |
| DIN rail frame set • 2 rows x 11 modules, for size 400x300x210 | DRS ARCA 403021 |
| DIN rail frame set • 2 rows x 22 modules, for size 400x500x210 | DRS ARCA 405021 |
| DIN rail frame set • 3 rows x 16 modules, for size 500x400x210 | DRS ARCA 504021 |
| DIN rail frame set • 2 rows x 27 modules, for size 400x600x210 | DRS ARCA 406021 |
| DIN rail frame set • 3 rows x 16 modules, for size 600x400x210 | DRS ARCA 604021 |
| DIN rail frame set • 3 rows x 32 modules, for size 500x700x300 | DRS ARCA 507030 |
| DIN rail frame set • 4 rows x 21 modules, for size 700x500x300 | DRS ARCA 705030 |
| DIN rail frame set • 3 rows x 37 modules, for size 600x800x300 | DRS ARCA 608030 |
| DIN rail frame set • 4 rows x 26 modules, for size 800x600x300 | DRS ARCA 806030 |

Inner Door Sets (Galvanized Steel)

| | |
|--|---------------|
| Inner door set • Galvanized steel, RAL 7035, for size 200x300x150 | IDS ARCA 2030 |
| Inner door set • Galvanized steel, RAL 7035, for size 300x200x150 | IDS ARCA 3020 |
| Inner door set • Galvanized steel, RAL 7035, for sizes 300x400x150/210 | IDS ARCA 3040 |
| Inner door set • Galvanized steel, RAL 7035, for sizes 400x300x150/210 | IDS ARCA 4030 |
| Inner door set • Galvanized steel, RAL 7035, for size 400x500x210 | IDS ARCA 4050 |
| Inner door set • Galvanized steel, RAL 7035, for size 500x400x210 | IDS ARCA 5040 |
| Inner door set • Galvanized steel, RAL 7035, for size 400x600x210 | IDS ARCA 4060 |
| Inner door set • Galvanized steel, RAL 7035, for size 600x400x210 | IDS ARCA 6040 |
| Inner door set • Galvanized steel, RAL 7035, for size 500x700x300 | IDS ARCA 5070 |
| Inner door set • Galvanized steel, RAL 7035, for size 700x500x300 | IDS ARCA 7050 |
| Inner door set • Galvanized steel, RAL 7035, for size 600x800x300 | IDS ARCA 6080 |
| Inner door set • Galvanized steel, RAL 7035, for size 800x600x300 | IDS ARCA 8060 |

Wall Mounting Lugs Set

| | |
|---|-------------------|
| Wall mounting lugs set • Adds 10mm between wall and cabinet | WMK ARCA 10 SMALL |
| Wall mounting lugs set • Adds 40mm between wall and cabinet | WMK ARCA 40 SMALL |
| Wall mounting lugs set for 5070-8060 • Adds 10mm between wall and cabinet | WMK ARCA 10 MID |
| Wall mounting lugs set for 5070-8060 • Adds 40mm between wall and cabinet | WMK ARCA 40 MID |
| Plastic wall mounting lugs set • Adds 10mm between wall and cabinet | WMKQ10S |
| Plastic wall mounting lugs set • Adds 50mm between wall and cabinet | WMKQ50S |
| Plastic wall mounting lugs set for 5070-8060 • Adds 10mm between wall and cabinet | WMKQ10M |
| Plastic wall mounting lugs set for 5070-8060 • Adds 50mm between wall and cabinet | WMKQ50M |

TEMPO

A range of smooth side ABS enclosures.

Technical Data

Material: ABS
 Halogen free
 Finish: RAL 7035
 Temperature range: -40°C to + 60°C (continuous use)
 Flammability: UL94 HB
 Approvals: ROHS

IP65/IK07

FIBOX

Enclosing innovations



Enclosure with Grey Lid

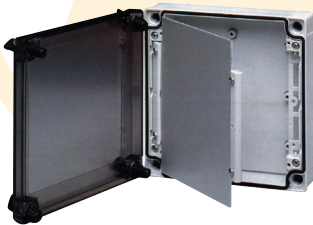
| Dimensions | | | Enclosure Part No. | Mounting Plate Part No. |
|------------|--------|--------|--------------------|-------------------------|
| H (mm) | W (mm) | D (mm) | | |
| 95 | 65 | 60 | TA090706 | MP0907 |
| 110 | 110 | 65 | TA111107 | MP1111 |
| 130 | 95 | 65 | TA131007 | MP1310 |
| 130 | 130 | 75 | TA131308 | MP1313 |
| 187 | 122 | 90 | TA 191209 | MP 1912 |
| 201 | 163 | 98 | TA 201610 | MP 2016 |
| 240 | 191 | 107 | TA 241911 | MP 2419 |
| 289 | 239 | 107 | TA 292411 | MP 2924 |
| 344 | 289 | 117 | TA 342912 | MP 3429 |

Enclosure with Clear Lid

| Dimensions | | | Enclosure Part No. | Mounting Plate Part No. |
|------------|--------|--------|--------------------|-------------------------|
| H (mm) | W (mm) | D (mm) | | |
| 187 | 122 | 90 | TA 191209 T | MP 1912 |
| 201 | 163 | 98 | TA 201610 T | MP 2016 |
| 240 | 191 | 107 | TA 241911 T | MP 2419 |
| 289 | 239 | 107 | TA 292411 T | MP 2924 |
| 344 | 289 | 117 | TA 342912 T | MP 3429 |

FIBOX

Enclosing innovations



L = Low Base 25mm
H = High Base 50mm
XH = Extra High Base 75mm

MX

A range of smooth side polycarbonate enclosures.

Technical Data

Material: Polycarbonate
Halogen free
Finish: RAL 7035
Temperature range: -40°C to + 80°C (continuous use)
Flammability: UL94 - 5V
Approvals: NEMA

IP66-67/IK08

Enclosure with Grey Lid

| Dimensions | | | Enclosure Part No. | Component Part (C*) | Mounting Plate Part No. |
|------------|--------|--------|--------------------|---------------------|-------------------------|
| H (mm) | W (mm) | D (mm) | | | |
| 130 | 80 | 35 | PC 100/35 LG | | MIV 100 |
| 130 | 80 | 75 | PC 100/75 LG | C | MIV 100 |
| 130 | 80 | 100 | PC 100/100 LG | C | MIV 100 |
| 130 | 80 | 60 | PC 100/60 HG | | MIV 100 |
| 130 | 80 | 100 | PC 100/100 HG | | MIV 100 |
| 130 | 80 | 125 | PC 100/125 HG | | MIV 100 |
| 130 | 130 | 35 | PC 125/35 LG | | MIV 125 |
| 130 | 130 | 75 | PC 125/75 LG | | MIV 125 |
| 130 | 130 | 100 | PC 125/100 LG | | MIV 125 |
| 130 | 130 | 60 | PC 125/60 HG | | MIV 125 |
| 130 | 130 | 100 | PC 125/100 HG | | MIV 125 |
| 130 | 130 | 125 | PC 125/125 HG | | MIV 125 |
| 180 | 130 | 35 | PC 150/35 LG | | MIV 150 |
| 180 | 130 | 50 | PC 150/50 LG | | MIV 150 |
| 180 | 130 | 75 | PC 150/75 LG | C | MIV 150 |
| 180 | 130 | 100 | PC 150/100 LG | C | MIV 150 |
| 180 | 130 | 60 | PC 150/60 HG | | MIV 150 |
| 180 | 130 | 75 | PC 150/75 HG | | MIV 150 |
| 180 | 130 | 100 | PC 150/100 HG | | MIV 150 |
| 180 | 130 | 125 | PC 150/125 HG | | MIV 150 |
| 180 | 180 | 60 | PC 175/60 HG | | MIV 175 |
| 180 | 180 | 100 | PC 175/100 HG | | MIV 175 |
| 255 | 180 | 63 | PC 200/63 HG | | MIV 200 |
| 255 | 180 | 88 | PC 200/88 XHG | | MIV 200 |
| 255 | 180 | 100 | PC 200/100 HG | | MIV 200 |
| 255 | 180 | 100 | PC 200/100 XHG | | MIV 200 |
| 255 | 180 | 100 | PC 200/125 XHG | | MIV 200 |
| 255 | 180 | 175 | PC 200/175 XHG | | MIV 200 |

*Supplied with loose base/cover/screws.

Enclosure with Clear Lid

| Dimensions | | | Enclosure Part No. | Component Part (C*) | Mounting Plate Part No. |
|------------|--------|--------|--------------------|---------------------|-------------------------|
| H (mm) | W (mm) | D (mm) | | | |
| 130 | 80 | 35 | PC 100/35 LT | | MIV 100 |
| 130 | 80 | 75 | PC 100/75 LT | C | MIV 100 |
| 130 | 80 | 100 | PC 100/100 LT | C | MIV 100 |
| 130 | 80 | 60 | PC 100/60 HT | | MIV 100 |
| 130 | 80 | 100 | PC 100/100 HT | C | MIV 100 |
| 130 | 80 | 125 | PC 100/125 HT | C | MIV 100 |
| 130 | 130 | 35 | PC 125/35 LT | | MIV 125 |
| 130 | 130 | 75 | PC 125/75 LT | C | MIV 125 |
| 130 | 130 | 100 | PC 125/100 LT | C | MIV 125 |
| 130 | 130 | 60 | PC 125/60 HT | | MIV 125 |
| 130 | 130 | 100 | PC 125/100 HT | | MIV 125 |
| 130 | 130 | 125 | PC 125/125 HT | | MIV 125 |
| 180 | 130 | 35 | PC 150/35 LT | | MIV 150 |
| 180 | 130 | 50 | PC 150/50 LT | | MIV 150 |
| 180 | 130 | 75 | PC 150/75 LT | C | MIV 150 |
| 180 | 130 | 100 | PC 150/100 LT | | MIV 150 |
| 180 | 130 | 60 | PC 150/60 HT | | MIV 150 |
| 180 | 130 | 75 | PC 150/75 HT | | MIV 150 |
| 180 | 130 | 100 | PC 150/100 HT | | MIV 150 |
| 180 | 130 | 125 | PC 150/125 HT | C | MIV 150 |
| 180 | 180 | 60 | PC 175/60 HT | | MIV 175 |
| 180 | 180 | 100 | PC 175/100 HT | C | MIV 175 |
| 255 | 180 | 63 | PC 200/63 HT | | MIV 200 |
| 255 | 180 | 88 | PC 200/88 XHT | | MIV 200 |
| 255 | 180 | 100 | PC 200/100 HT | | MIV 200 |
| 255 | 180 | 100 | PC 200/100 XHT | C | MIV 200 |
| 255 | 180 | 125 | PC 200/125 XHT | | MIV 200 |
| 255 | 180 | 175 | PC 200/175 XHT | | MIV 200 |

*Supplied with loose base/cover/screws.

Accessories

| Description | Part No. |
|-----------------------------------|----------|
| Wall mounting bracket (pack of 4) | FP 22046 |

Piccolo

High quality polycarbonate enclosures to IP67.

Technical Data

| | |
|--------------------|---------------------------------------|
| Material: | Polycarbonate halogen free |
| Finish: | RAL 7035 |
| Temperature range: | -40°C to + 80°C (continuous use) |
| Flammability: | UL94 - 5V |
| Approvals: | UL, Lloyds, Germanischer Lloyd, FIMKO |

Enclosure with Grey Lid

| Dimensions | | | Enclosure Part No. | Mounting Plate Part No. |
|------------|--------|--------|--------------------|-------------------------|
| H (mm) | W (mm) | D (mm) | | |
| 110 | 80 | 65 | PC B 65 G | B-MP |
| 110 | 80 | 85 | PC B 85 G | B-MP |
| 140 | 80 | 65 | PC C 65 G | C-MP |
| 140 | 80 | 85 | PC C 85 G | C-MP |
| 170 | 80 | 65 | PC D 65 G | D-MP |
| 170 | 80 | 85 | PC D 85 G | D-MP |
| 230 | 80 | 65 | PC F 65 G | F-MP |
| 230 | 80 | 85 | PC F 85 G | F-MP |
| 170 | 140 | 95 | PC H 95 G | H-MP |
| 230 | 140 | 95 | PC M 95 G | M-MP |
| 230 | 150 | 125 | PC MH 125 G | M-MP |

Versions in ABS and clear lid available.

Accessories

| Description | Pack Qty. | Part No. |
|-----------------------|-----------|----------|
| Wall mounting bracket | 4 | FP 22046 |
| Hinges | 2 | PA 22039 |

Solid

Medium to large size polycarbonate enclosures offering high IP rating.

Technical Data

| | |
|--------------------|---------------------------------------|
| Material: | Polycarbonate Halogen free |
| Finish: | RAL 7035 |
| Temperature range: | -40°C to + 80°C (continuous use) |
| Flammability: | UL94 - 5V |
| Approvals: | UL, Lloyds, Germanischer Lloyd, FIMKO |

Enclosure with Grey Lid

| Dimensions | | | Enclosure Part No. | Mounting Plate Part No. |
|------------|--------|--------|--------------------|-------------------------|
| H (mm) | W (mm) | D (mm) | | |
| 190 | 190 | 130 | PC 191913G | EKHVT |
| 190 | 190 | 180 | PC 191918G | EKHVT |
| 280 | 190 | 130 | PC 281913G | EKJVT |
| 280 | 190 | 180 | PC 281918G | EKJVT |
| 380 | 190 | 130 | PC 381913G | EKMVT |
| 380 | 190 | 180 | PC 381918G | EKMVT |
| 280 | 280 | 130 | PC 282813G | EKOVT |
| 280 | 280 | 180 | PC 282818G | EKOVT |
| 380 | 280 | 130 | PC 382813G | EKPVT |
| 380 | 280 | 180 | PC 382818G | EKPVT |
| 560 | 280 | 130 | PC 562813G | EKTVT |
| 560 | 380 | 180 | PC 563818G | EKUVT |

Enclosure with Clear Lid

| Dimensions | | | Enclosure Part No. | Mounting Plate Part No. |
|------------|--------|--------|--------------------|-------------------------|
| H (mm) | W (mm) | D (mm) | | |
| 190 | 190 | 130 | PC 191913T | EKHVT |
| 190 | 190 | 180 | PC 191918T | EKHVT |
| 280 | 190 | 130 | PC 281913T | EKJVT |
| 280 | 190 | 180 | PC 281918T | EKJVT |
| 380 | 190 | 130 | PC 381913T | EKMVT |
| 380 | 190 | 180 | PC 381918T | EKMVT |
| 280 | 280 | 130 | PC 282813T | EKOVT |
| 280 | 280 | 180 | PC 282818T | EKOVT |
| 380 | 280 | 130 | PC 382813T | EKPVT |
| 380 | 280 | 180 | PC 382818T | EKPVT |
| 560 | 280 | 130 | PC 562813T | EKTVT |
| 560 | 380 | 180 | PC 563818T | EKUVT |

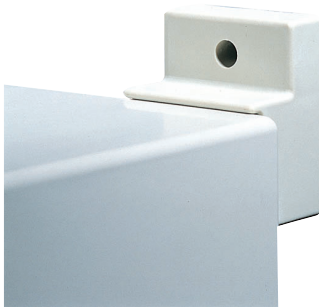
Also available in ABS.

Accessories

| Description | Pack Qty. | Part No. |
|--|-----------|----------|
| Hinges (Pack of 2) | 4 | MB 10622 |
| Wall mounting bracket (Pack of 4) | 2 | MB 10674 |
| Description | Size | Part No. |
| Inspection windows with smoked grey transparent window | 248 x 128 | L 12 II |
| | 248 x 218 | L 24 II |

IP66-67/IK08





KS Range

GRP enclosures available with or without viewing window.

Technical Data

Material: Glass fibre reinforced unsaturated polyester
 Mounting plate: 3mm sheet steel zinc plated
 Viewing window: Impact resistant 3.0mm glazed acrylic
 Temperature resistance: Up to 150°C (transparent cover version 120°C)
 Approvals: UL, CSA & Lloyds

IP56/IP66

Standard Enclosure

| Dimensions | | | | | |
|------------|--------|--------|-----------|----------------|----------|
| H (mm) | W (mm) | D (mm) | IP Rating | Viewing Window | Part No. |
| 1000 | 1000 | 300 | 56 | - | 1400.500 |
| 300 | 200 | 150 | 66 | - | 1423.500 |
| 350 | 250 | 150 | 66 | - | 1432.500 |
| 400 | 300 | 200 | 66 | - | 1434.500 |
| 400 | 400 | 200 | 66 | - | 1444.500 |
| 600 | 400 | 200 | 66 | - | 1446.500 |
| 400 | 400 | 200 | 56 | yes | 1448.500 |
| 600 | 400 | 200 | 56 | yes | 1449.500 |
| 500 | 500 | 300 | 66 | - | 1453.500 |
| 500 | 500 | 300 | 56 | yes | 1454.500 |
| 600 | 600 | 200 | 66 | - | 1466.500 |
| 600 | 600 | 200 | 56 | yes | 1467.500 |
| 800 | 600 | 300 | 66 | - | 1468.500 |
| 800 | 600 | 300 | 56 | yes | 1469.500 |
| 1000 | 800 | 300 | 56 | yes | 1479.500 |
| 1000 | 800 | 300 | 66 | - | 1480.500 |

Accessories

| Description | Pack Qty. | Part No. |
|---------------------------------|-----------|----------|
| Wall Mounting Brackets | | |
| Fibreglass reinforced polyamide | 4 | 1483.010 |
| Pole clamp | | 2584.000 |

Ancillaries

| Description | Pack Qty. | Part No. |
|-----------------------------------|-----------------------------------|----------|
| Mounting plate adjustment bracket | (for enclosures ≤250mm deep) 4 | 1481.000 |
| | (for enclosures 300mm deep) 4 | 1491.000 |
| Self tapping screws | 300 | 2487.000 |
| Threaded inserts | 20 | 1482.000 |

Spacial SBM Series

A comprehensive range of steel industrial boxes with different dimensions in plain cover versions.

IP66/IK10



Technical Data

Material: Sheet steel
Finish: RAL 7035

Steel Industrial Boxes

| External Dimensions | | | Plain Door Part No. |
|---------------------|-----------|-----------|------------------------|
| H (mm) | W (mm) | D (mm) | |
| 150 | 150 | 80 | NSYSBM15158 |
| 150 | 150 | 120 | NSYSBM151512 |
| 150 | 200 | 80 | NSYSBM15208 |
| 150 | 200 | 120 | NSYSBM152012 |
| 150 | 300 | 80 | NSYSBM15308 |
| 150 | 300 | 120 | NSYSBM153012 |
| 150 | 400 | 80 | NSYSBM15408 |
| 150 | 400 | 120 | NSYSBM154012 |
| 200 | 200 | 80 | NSYSBM20208 |
| 200 | 200 | 120 | NSYSBM202012 |
| 200 | 300 | 80 | NSYSBM20308 |
| 200 | 300 | 120 | NSYSBM203012 |
| 200 | 400 | 80 | NSYSBM20408 |
| 200 | 400 | 120 | NSYSBM204012 |
| 200 | 500 | 80 | NSYSBM20508 |
| 200 | 500 | 120 | NSYSBM205012 |
| 200 | 600 | 80 | NSYSBM20608 |
| 200 | 600 | 120 | NSYSBM206012 |
| 200 | 800 | 120 | NSYSBM208012 |
| 300 | 300 | 120 | NSYSBM303012 |
| 300 | 400 | 120 | NSYSBM304012 |
| 300 | 500 | 120 | NSYSBM305012 |
| 300 | 600 | 120 | NSYSBM306012 |
| 300 | 800 | 120 | NSYSBM308012 |
| 400 | 400 | 120 | NSYSBM404012 |
| 400 | 500 | 120 | NSYSBM405012 |
| 400 | 600 | 120 | NSYSBM406012 |
| 400 | 800 | 120 | NSYSBM408012 |



Plain Mounting Plates

| To Fit Enclosure | | | Part No. |
|------------------|-----------|-----------|-----------|
| H (mm) | W (mm) | D (mm) | |
| 150 | 150 | 80 | NSYMM11SB |
| 150 | 150 | 120 | NSYMM11SB |
| 150 | 200 | 80 | NSYMM12SB |
| 150 | 200 | 120 | NSYMM12SB |
| 150 | 300 | 80 | NSYMM13SB |
| 150 | 300 | 120 | NSYMM13SB |
| 150 | 400 | 80 | NSYMM14SB |
| 150 | 400 | 120 | NSYMM14SB |
| 200 | 200 | 80 | NSYMM22SB |
| 200 | 200 | 120 | NSYMM22SB |
| 200 | 300 | 80 | NSYMM23SB |
| 200 | 300 | 120 | NSYMM23SB |
| 200 | 400 | 80 | NSYMM24SB |
| 200 | 400 | 120 | NSYMM24SB |
| 200 | 500 | 80 | NSYMM25SB |
| 200 | 500 | 120 | NSYMM25SB |
| 200 | 600 | 80 | NSYMM26SB |
| 200 | 600 | 120 | NSYMM26SB |
| 200 | 800 | 120 | NSYMM28SB |
| 300 | 300 | 120 | NSYMM33SB |
| 300 | 400 | 120 | NSYMM34SB |
| 300 | 500 | 120 | NSYMM35SB |
| 300 | 600 | 120 | NSYMM36SB |
| 300 | 800 | 120 | NSYMM38SB |
| 400 | 400 | 120 | NSYMM44SB |
| 400 | 500 | 120 | NSYMM45SB |
| 400 | 600 | 120 | NSYMM46SB |
| 400 | 800 | 120 | NSYMM48SB |



KL Range - Mild Steel

Industrial wall mounting cabinets with screw fixed lid.

IP55/IP66

Technical Data

Material: Sheet steel 1.25mm
Mounting plate: 2mm sheet steel zinc plated
Enclosure and doors powder coated in textured RAL 7035

Approvals: UL, CSA, VDE amongst others

Without Gland Plate

| Dimensions | | | | IP Rating | Enclosure Part No. | Mounting Plate Part No. |
|------------|--------|--------|----|-----------|--------------------|-------------------------|
| H (mm) | W (mm) | D (mm) | | | | |
| 150 | 150 | 120 | 66 | 1500.510 | 1560.700 | |
| 150 | 300 | 120 | 66 | 1501.510 | 1561.700 | |
| 200 | 200 | 120 | 66 | 1502.510 | 1562.700 | |
| 200 | 300 | 120 | 66 | 1503.510 | 1563.700 | |
| 200 | 400 | 120 | 66 | 1504.510 | 1564.700 | |
| 200 | 500 | 120 | 66 | 1505.510 | 1565.700 | |
| 200 | 600 | 120 | 66 | 1506.510 | 1566.700 | |
| 300 | 300 | 120 | 66 | 1507.510 | 1567.700 | |
| 300 | 400 | 120 | 66 | 1508.510 | 1568.700 | |
| 300 | 500 | 120 | 66 | 1509.510 | 1569.700 | |
| 300 | 600 | 120 | 66 | 1510.510 | 1570.700 | |
| 400 | 400 | 120 | 66 | 1511.510 | 1571.700 | |
| 400 | 600 | 120 | 66 | 1512.510 | 1572.700 | |
| 400 | 800 | 120 | 66 | 1513.510 | 1573.700 | |
| 150 | 150 | 80 | 66 | 1514.510 | 1560.700 | |
| 150 | 300 | 80 | 66 | 1515.510 | 1561.700 | |
| 200 | 200 | 80 | 66 | 1516.510 | 1562.700 | |
| 200 | 300 | 80 | 66 | 1517.510 | 1563.700 | |
| 200 | 400 | 80 | 66 | 1518.510 | 1564.700 | |
| 200 | 600 | 80 | 66 | 1519.510 | 1566.700 | |
| 200 | 800 | 120 | 66 | 1527.510 | 1574.700 | |
| 150 | 200 | 80 | 66 | 1528.510 | 1575.700 | |
| 150 | 200 | 120 | 66 | 1529.510 | 1575.700 | |
| 150 | 400 | 120 | 66 | 1589.510 | 1576.700 | |

With Gland Plate

| Dimensions | | | | IP Rating | Enclosure Part No. | Mounting Plate Part No. |
|------------|--------|--------|----|-----------|--------------------|-------------------------|
| H (mm) | W (mm) | D (mm) | | | | |
| 150 | 300 | 120 | 55 | 1530.510 | 1561.700 | |
| 200 | 300 | 120 | 55 | 1531.510 | 1563.700 | |
| 200 | 400 | 120 | 55 | 1532.510 | 1564.700 | |
| 200 | 500 | 120 | 55 | 1533.510 | 1565.700 | |
| 200 | 600 | 120 | 55 | 1534.510 | 1566.700 | |
| 300 | 300 | 120 | 55 | 1535.510 | 1567.700 | |
| 300 | 400 | 120 | 55 | 1536.510 | 1568.700 | |
| 300 | 500 | 120 | 55 | 1537.510 | 1569.700 | |
| 300 | 600 | 120 | 55 | 1538.510 | 1570.700 | |
| 400 | 400 | 120 | 55 | 1539.510 | 1571.700 | |
| 400 | 600 | 120 | 55 | 1540.510 | 1572.700 | |
| 400 | 800 | 120 | 55 | 1541.510 | 1573.700 | |
| 200 | 800 | 120 | 55 | 1542.510 | 1574.700 | |

Wall Brackets

| Description | Wall Distance (mm) | Pack Qty. | Part No. |
|-------------------------|--------------------|-----------|----------|
| Sheet steel-zinc plated | 8 | 4 | 1590.000 |
| Brass-nickel plated | 8 | 4 | 1580.000 |
| Sheet steel-zinc plated | 10 | 4 | 2508.010 |
| | 40 | 4 | 2503.010 |

Ancillaries

| Description | Pack Qty. | Part No. |
|------------------------|-----------|----------|
| Quick release fastener | 12 | 1593.000 |
| Cover hinge | 3 | 1592.000 |
| Cover retainer | 3 | 1591.000 |
| Earth kit | 5 | 2570.100 |
| Metal gland plate | 1 | 1581.100 |

EB Range - Mild Steel

Industrial wall mounting cabinets with hinged lid.

Technical Data

Material: Sheet steel box 1.38mm, Door 1.25mm
 Mounting plate: 2.5mm sheet steel zinc plated
 Finish: Enclosure and doors powder coated in textured RAL 7035
 Approvals: UL, CSA, VDE amongst others

IP66



Enclosures

| Dimensions | | | | Part No. |
|------------|--------|--------|--|----------|
| H (mm) | W (mm) | D (mm) | | |
| 150 | 150 | 80 | | 1551.500 |
| 150 | 150 | 120 | | 1553.500 |
| 200 | 200 | 80 | | 1546.500 |
| 200 | 200 | 120 | | 1549.500 |
| 300 | 150 | 80 | | 1545.500 |
| 300 | 150 | 120 | | 1548.500 |
| 300 | 200 | 80 | | 1552.500 |
| 300 | 200 | 120 | | 1554.500 |
| 300 | 300 | 120 | | 1555.500 |
| 400 | 200 | 80 | | 1547.500 |
| 400 | 300 | 155 | | 1577.500 |
| 400 | 200 | 120 | | 1550.500 |
| 400 | 300 | 120 | | 1556.500 |
| 500 | 200 | 120 | | 1557.500 |
| 600 | 300 | 155 | | 1578.500 |
| 800 | 300 | 155 | | 1579.500 |

Accessories

Wall Mounting Brackets

| Description | Wall Distance (mm) | Pack Qty. | Part No. |
|-------------------------|--------------------|-----------|----------|
| Sheet steel zinc plated | 8 | 4 | 1590.000 |
| Brass-nickel plated | 8 | 4 | 1580.000 |
| Steel | 10 | 1 | 2508.010 |
| | 40 | 1 | 2503.010 |
| Pole Clamp | | 2 | 2584.000 |
| Mounting Clip | | 30 | 2309.000 |
| Lock Insert | | 1 | 2571.000 |
| Lock Cover | | 2 | 2476.000 |

Locks
 Fitted as standard with a double-bit lock. This may be changed for:-

| | |
|------------------|-------------|
| Lock inserts | (Version A) |
| Cylinder inserts | (Version B) |
| Plastic handles | (Version B) |
| T handles | (Version B) |

KL Range - Stainless Steel

Wall mounting enclosures with screw fixed lid.

Technical Data

Material: Stainless steel IP66 1.4301 (AISI 304)
 IP66 1.401; 1.5mm
 Finish: Brushed
 Approvals: UL, CSA, VDE amongst others

IP66



Without Gland Plate

| Dimensions | | | | Enclosures | Mounting Plates |
|------------|--------|--------|-----------|------------|-----------------|
| H (mm) | W (mm) | D (mm) | IP Rating | Part No. | Part No. |
| 150 | 150 | 80 | 66 | 1521.010 | 1560.700 |
| 150 | 300 | 80 | 66 | 1522.010 | 1561.700 |
| 200 | 200 | 80 | 66 | 1523.010 | 1562.700 |
| 200 | 300 | 80 | 66 | 1524.010 | 1563.700 |
| 200 | 400 | 120 | 66 | 1525.010 | 1564.700 |
| 300 | 300 | 120 | 66 | 1526.010 | 1567.700 |
| 150 | 150 | 120 | 66 | 1527.010 | 1560.700 |
| 200 | 200 | 120 | 66 | 1528.010 | 1562.700 |
| 200 | 300 | 120 | 66 | 1529.010 | 1563.700 |
| 300 | 400 | 120 | 66 | 1530.010 | 1568.700 |

Accessories

Wall Mounting Brackets

| Description | Wall Distance (mm) | Pack Qty. | Part No. |
|-----------------|--------------------|-----------|----------|
| Stainless steel | 8 | 4 | 1594.000 |
| | 10 | 4 | 2433.000 |



STB Range - Mild Steel - ATEX

IP66/67

Industrial mild steel wall mounting cabinets, fitted with TAS20 rail welded to enclosure base for equipment mounting.

Technical Data

| | |
|--------------------|--|
| Material: | 1.5mm thick mild steel (16 SWG) |
| Finish: | RAL 7032 Grey |
| Impact resistance: | 7Nm |
| Temperature range: | -40°C to +85°C -20°C to +40°C (ambient) |
| Approvals: | ATEX |
| Gland plates: | None |

Enclosure with Grey Lid - IP67

| Type | Dimensions | | | Part No. |
|--------------|------------|--------|--------|------------|
| | H (mm) | W (mm) | D (mm) | |
| STB1 MS HT | 120 | 120 | 80 | 1024970000 |
| STB1.1 MS HT | 150 | 120 | 80 | 1024980000 |
| STB2 MS HT | 150 | 150 | 90 | 1024990000 |
| STB2.1 MS HT | 190 | 150 | 90 | 1025010000 |
| STB3 MS HT | 190 | 190 | 100 | 1025020000 |
| STB4 MS HT | 250 | 250 | 120 | 1025030000 |
| STB5 MS HT | 160 | 380 | 120 | 1025040000 |
| STB6 MS HT | 260 | 400 | 130 | 1025050000 |

Accessories

| Description | Part No. |
|-------------------------------------|-----------|
| Sliding fixing nut with M5 screw | 043350000 |
| Earth stud kit with M8 brass screws | 950270000 |



STB Range - Stainless Steel - ATEX

IP66

Wall mounting cabinets.

Technical Data

| | |
|--------------------|--|
| Material: | 1.5mm thick stainless steel 316L |
| Finish: | Chemical dip (bright polished appearance) |
| Impact resistance: | 7Nm |
| Temperature range: | -40°C to + 85°C -20°C to + 40°C (ambient) |
| Approvals: | ATEX |
| Gland plates: | None |

Stainless Steel

| Type | Dimensions | | | Part No. |
|-------------|------------|--------|--------|------------|
| | H (mm) | W (mm) | D (mm) | |
| STB1 SS E | 120 | 120 | 80 | 1058810000 |
| STB1.1 SS E | 150 | 120 | 80 | 1058820000 |
| STB2 SS E | 150 | 150 | 90 | 1058830000 |
| STB2.1 SS E | 190 | 150 | 90 | 1058840000 |
| STB3 SS E | 190 | 190 | 100 | 1058850000 |
| STB4 SS E | 250 | 250 | 120 | 1058860000 |
| STB5 SS E | 160 | 380 | 120 | 1058880000 |
| STB6 SS E | 250 | 400 | 130 | 1058870000 |

Accessories

| Description | Part No. |
|-------------------------------------|-----------|
| Sliding fixing nut with M5 screw | 043350000 |
| Earth stud kit with M6 brass screws | 950270000 |

K Range - Aluminium - Atex

The K range of enclosures offers an extremely good resistance to industrial and marine environments. They are suitable for use as terminal junction boxes and housings for switches, push-buttons, indicators, lights etc..

IP66/IP67

Weidmüller 

Technical Data

| | |
|--------------------|---|
| Material: | Aluminium alloy |
| Finish: | Smooth natural finish |
| Impact resistance: | 7Nm |
| Temperature range: | -30°C to +85°C +100°C for 1 hour -30°C to +40°C (ambient) |
| Approvals: | ATEX cULus aE197061 |



Aluminium Enclosures

| Type | Dimensions | | | Enclosure Part No | Mounting Plate Part No. |
|------|------------|--------|--------|-------------------|-------------------------|
| | H (mm) | W (mm) | D (mm) | | |
| K 0 | 45 | 50 | 30 | 0573200000 | - |
| K 01 | 64 | 58 | 34 | 1565240000 | - |
| K 02 | 64 | 98 | 34 | 1565250000 | - |
| K 1 | 70 | 70 | 45 | 0342000000 | 1905280000 |
| K 11 | 80 | 75 | 57 | 0573300000 | 3073000000 |
| K 2 | 70 | 100 | 45 | 0342100000 | 1905270000 |
| K 21 | 80 | 125 | 57 | 0573400000 | 3073020000 |
| K 3 | 70 | 165 | 45 | 0342200000 | 1898210000 |
| K 31 | 80 | 175 | 57 | 0573500000 | 3073040000 |
| K 32 | 80 | 250 | 55 | 1565260000 | 3073050000 |
| K 4 | 82 | 130 | 72 | 0342300000 | 3073060000 |
| K 41 | 120 | 122 | 81 | 1565270000 | 3073070000 |
| K 5 | 130 | 170 | 90 | 0342400000 | 3073080000 |
| K 51 | 120 | 220 | 81 | 1565280000 | 3073090000 |
| K 52 | 160 | 160 | 91 | 1565290000 | 3073100000 |
| K 6 | 160 | 200 | 100 | 0342500000 | 3073110000 |
| K 61 | 160 | 260 | 91 | 0573600000 | 3073120000 |
| K 7 | 160 | 350 | 100 | 0342600000 | 3073130000 |
| K 71 | 230 | 280 | 111 | 0573700000 | 3073140000 |
| K 72 | 230 | 400 | 111 | 1565300000 | 3073150000 |
| K 8 | 160 | 585 | 100 | 0351200000 | 3073160000 |
| K 81 | 313 | 404 | 111 | 0573800000 | 3073170000 |

Special painted finish available on request.

Accessories

Mounting Rails

| Type | Part No. |
|-----------|------------|
| TS32 (2m) | 0122800000 |
| TS35 (2m) | 0383400000 |
| TS15 (2m) | 0117500000 |

Stand Off Pillars

| Length (mm) | Pack Qty. | Part No. |
|-------------|-----------|------------|
| 15 | 2 | 3896100000 |
| 20 | 2 | 3896200000 |
| 30 | 2 | 3896300000 |

Wall Mounted Mild Steel Enclosures



Spacial S3D

Spacial S3D is a market leading range of wall mounting enclosures ideal for non-clean indoor industrial environments. They are light and resistant enclosures made from a folded cross structure of sheet steel ensuring good protection, strength and quality. Overall the Spacial S3D is easy to handle, easy to adapt and attractive.

Technical Data

| | |
|------------|-------------------------------|
| Material: | Steel |
| Finish: | Textured powder paint RAL7035 |
| Approvals: | LCIE, UL, DNV, BV & GL. |

S3D with Mounting Plate

IP66

| Description | Dimensions | | | Part No. |
|-------------|------------|--------|--------|---------------|
| | H (mm) | W (mm) | D (mm) | |
| | 300 | 200 | 150 | NSYS3D3215P |
| | 300 | 250 | 150 | NSYS3D32515P |
| | 300 | 300 | 150 | NSYS3D3315P |
| | 300 | 300 | 200 | NSYS3D3320P |
| | 300 | 400 | 150 | NSYS3D3415P |
| | 400 | 300 | 150 | NSYS3D4315P |
| | 400 | 300 | 200 | NSYS3D4320P |
| | 400 | 400 | 200 | NSYS3D4420P |
| | 400 | 600 | 200 | NSYS3D4620P |
| | 400 | 600 | 250 | NSYS3D4625P |
| | 500 | 300 | 200 | NSYS3D5320P |
| | 500 | 400 | 200 | NSYS3D5420P |
| | 500 | 400 | 250 | NSYS3D5425P |
| | 500 | 500 | 200 | NSYS3D5520P |
| | 500 | 500 | 250 | NSYS3D5525P |
| | 600 | 400 | 200 | NSYS3D6420P |
| | 600 | 400 | 250 | NSYS3D6425P |
| | 600 | 500 | 250 | NSYS3D6525P |
| | 600 | 600 | 200 | NSYS3D6620P |
| | 600 | 600 | 250 | NSYS3D6625P |
| | 600 | 600 | 300 | NSYS3D6630P |
| | 600 | 600 | 400 | NSYS3D6640P |
| | 600 | 800 | 300 | NSYS3D6830P |
| | 700 | 500 | 250 | NSYS3D7525P |
| | 800 | 600 | 200 | NSYS3D8620P |
| | 800 | 600 | 250 | NSYS3D8625P |
| | 800 | 600 | 300 | NSYS3D8630P |
| | 800 | 600 | 400 | NSYS3D8640P |
| | 800 | 800 | 250 | NSYS3D8825P |
| | 800 | 800 | 300 | NSYS3D8830P |
| | 800 | 1000 | 300 | NSYS3D81030P |
| | 1000 | 600 | 250 | NSYS3D10625P |
| | 1000 | 600 | 300 | NSYS3D10630P |
| | 1000 | 600 | 400 | NSYS3D10640P |
| | 1000 | 800 | 250 | NSYS3D10825P |
| | 1000 | 800 | 300 | NSYS3D10830P |
| | 1000 | 800 | 400 | NSYS3D10840P |
| | 1000 | 1000 | 300 | NSYS3D101030P |
| | 1200 | 600 | 300 | NSYS3D12630P |
| | 1200 | 600 | 400 | NSYS3D12640P |
| | 1200 | 800 | 300 | NSYS3D12830P |
| | 1200 | 800 | 400 | NSYS3D12840P |
| | 1200 | 1000 | 300 | NSYS3D121030P |

Mild steel wall mounting enclosure with plain door, plain mounting plate and 3mm double-bar lock.

Direct wall mounting (4 x Ø10 holes for sealing plugs guaranteeing IP) or use fixing lugs installed from outside (order separately NSYAEFPFSC)

S3D Double Door with Mounting Plate

IP55

| | | | | |
|--|------|------|-----|----------------|
| | 800 | 1000 | 300 | NSYS3D81030DP |
| | 800 | 1200 | 300 | NSYS3D81230DP |
| | 1000 | 1000 | 300 | NSYS3D101030DP |
| | 1000 | 1200 | 300 | NSYS3D101230DP |
| | 1200 | 1000 | 300 | NSYS3D121030DP |
| | 1200 | 1000 | 400 | NSYS3D121040DP |
| | 1200 | 1200 | 300 | NSYS3D121230DP |

Mild steel wall mounting enclosure with 2 plain doors, plain mounting plate and 3mm double-bar lock

S3D Enclosure with Transparent Door - No Mounting Plate

IP66

| | | | | |
|--|------|-----|-----|--------------|
| | 400 | 600 | 200 | NSYS3D4620T |
| | 600 | 600 | 250 | NSYS3D12640T |
| | 800 | 600 | 200 | NSYS3D6625T |
| | 1200 | 600 | 400 | NSYS3D8620T |

Mild steel wall mounting enclosure with transparent door and 3mm double-bar lock

Accessories

| Description | | | Part No. |
|---|---|---|----------------|
| Standard handles with keys for Spacial S3D 1242E key handle | Attractive and ergonomic bi-material handle | Supplied with 2 keys | NSYAEDL1242S3D |
| Set of 4 steel wall-fixing lugs | Mounting of the wall-fixing lugs in horizontal or vertical position | Maximum load: horizontal 180kg and vertical 350kg | NSYAEFPFSC |
| Set of 4 stainless steel wall fixing lugs | Mounting of the wall-fixing lugs in horizontal or vertical position | | NSYAEFPFXSC |



AE Range

Enclosure with door of sheet steel, spray-finished with mounting plate and gland plate in the base.

IP55/56/66

Technical Data

| | | |
|-------------------------|---|--|
| Material: | Door: | Glass fibre reinforced unsaturated polyester |
| | Mounting plate: | 3mm sheet steel zinc plated |
| | Viewing window: | Impact resistant 3.0mm glazed acrylic |
| Temperature resistance: | Up to 150°C (transparent cover version 120°C) | |
| Approvals: | UL, CSA & Lloyd's | |



Compact Enclosure

| Dimensions | | | | | |
|------------|--------|--------|-----------|--------------|----------|
| H (mm) | W (mm) | D (mm) | IP Rating | No. of doors | Part No. |
| 300 | 380 | 155 | 66 | 1 | 1030.500 |
| 300 | 380 | 210 | 66 | 1 | 1031.500 |
| 300 | 200 | 120 | 66 | 1 | 1032.500 |
| 300 | 300 | 210 | 66 | 1 | 1033.500 |
| 400 | 300 | 210 | 66 | 1 | 1034.500 |
| 300 | 200 | 155 | 66 | 1 | 1035.500 |
| 300 | 300 | 155 | 66 | 1 | 1036.500 |
| 800 | 400 | 300 | 66 | 1 | 1037.500 |
| 600 | 380 | 210 | 66 | 1 | 1038.500 |
| 380 | 600 | 210 | 66 | 1 | 1039.500 |
| 500 | 400 | 210 | 66 | 1 | 1045.500 |
| 500 | 500 | 210 | 66 | 1 | 1050.500 |
| 600 | 600 | 250 | 66 | 1 | 1054.500 |
| 600 | 800 | 300 | 66 | 1 | 1055.500 |
| 700 | 500 | 250 | 66 | 1 | 1057.500 |
| 800 | 600 | 250 | 66 | 1 | 1058.500 |
| 600 | 600 | 210 | 66 | 1 | 1060.500 |
| 760 | 760 | 300 | 66 | 1 | 1073.500 |
| 760 | 600 | 210 | 66 | 1 | 1076.500 |
| 760 | 760 | 210 | 66 | 1 | 1077.500 |
| 1000 | 600 | 250 | 56 | 1 | 1090.500 |
| 760 | 1000 | 210 | 56 | 2 | 1100.500 |
| 1000 | 1000 | 300 | 56 | 2 | 1110.500 |
| 1400 | 1000 | 300 | 56 | 2 | 1114.500 |
| 760 | 1000 | 300 | 56 | 2 | 1130.500 |
| 1000 | 800 | 300 | 55 | 1 | 1180.500 |
| 1200 | 1000 | 300 | 55 | 2 | 1213.500 |
| 1200 | 600 | 300 | 56 | 1 | 1260.500 |
| 1200 | 800 | 300 | 56 | 1 | 1280.500 |
| 600 | 380 | 350 | 56 | 1 | 1338.500 |
| 380 | 600 | 350 | 55 | 1 | 1339.500 |
| 500 | 500 | 300 | 56 | 1 | 1350.500 |
| 600 | 600 | 350 | 56 | 1 | 1360.500 |
| 760 | 600 | 350 | 55 | 1 | 1376.500 |
| 380 | 380 | 210 | 55 | 1 | 1380.500 |

Can be supplied with a glazed door.

Accessories

| Description | Wall Distance (mm) | Pack Qty. | Part No. |
|-------------------------------|--------------------|-----------|----------|
| Wall Mounting Brackets | | | |
| Steel | 10 | 4 | 2508.010 |
| | 40 | 4 | 2503.010 |
| | 15 | 4 | 2508.100 |

Plinths

| Width x Depth (mm) | Height (mm) | Part No. |
|--------------------|-------------|----------|
| 600 x 300 | 100 | 2816.200 |
| | 200 | 2826.200 |
| 800 x 300 | 100 | 2818.200 |
| | 200 | 2828.200 |
| 1000 x 300 | 100 | 2801.200 |
| | 200 | 2802.200 |

Ancillaries

| Description | Pack Qty. | Part No. | |
|---|--------------|----------|----------|
| Universal bracket: for simple mounting of accessories | | 2373.000 | |
| Door stay | 5 | 2519.000 | |
| Rails | 210 | 4 | 2383.210 |
| | 250 | 4 | 2383.250 |
| | 300 | 4 | 2383.300 |
| | 350 | 4 | 2383.350 |
| Mounting bars | 500/1000 | 20 | 2325.000 |
| | 600 | 20 | 2326.000 |
| Baying kit | | 1199.100 | |
| 180° hinge | 2 | 2449.000 | |
| LED Lights | | 2500.110 | |
| Infeed, 2-pole (with socket, without connector) | | 2500.420 | |
| Dust guard | | 2426.500 | |
| Document pocket | A5 Landscape | 2515.000 | |
| | A4 portrait | 2514.000 | |
| | A3 Landscape | 2513.000 | |
| Eyebolts | 4 | 2509.000 | |

Rain canopies also available.



Locks
Fitted as standard with a double-bit lock. This may be changed for:-

- Lock inserts (Version A)
- Cylinder inserts (Version B)
- Plastic handles (Version B)
- T handles (Version B)



Spacial S3X

The Spacial S3X range of wall mounting enclosures are specifically designed for the chemical, oil and gas, food and beverage industries, among others, which are particularly demanding in terms of hygiene and resistance corrosion.

Technical Data

Material: 304L Stainless steel
Finish: Scotch-Brite® brushed

S3X Stainless Steel Wall Enclosure

| Description | Dimensions | | | Part No. |
|--|------------|--------|--------|--------------|
| | H (mm) | W (mm) | D (mm) | |
| Contains 4 rear drill holes for easy fixing onto walls or machines, (use 304L fixing lugs, order separately ref: NSYPFCX) Stainless steel hinges screwed to the body of the enclosure, making it easy to remove and invert the door | 300 | 200 | 150 | NSYS3X3215 |
| | 300 | 300 | 150 | NSYS3X3315 |
| | 400 | 300 | 150 | NSYS3X4315 |
| | 400 | 300 | 200 | NSYS3X4320 |
| | 400 | 400 | 200 | NSYS3X4420 |
| | 400 | 600 | 200 | NSYS3X4620 |
| | 500 | 400 | 200 | NSYS3X5420 |
| | 600 | 400 | 200 | NSYS3X6420 |
| | 600 | 600 | 250 | NSYS3X6625 |
| | 700 | 500 | 250 | NSYS3X7525 |
| | 800 | 600 | 250 | NSYS3X8625 |
| | 800 | 800 | 300 | NSYS3X8830 |
| | 1000 | 800 | 300 | NSYS3X10830 |
| | 1200 | 800 | 300 | NSYS3X12830 |
| | 1200 | 1000 | 300 | NSYS3X121030 |

Accessories for Spacial S3D, S3X & Thalassa PLM

Plain steel mounting plates with reversible dimensions; it can be installed in enclosures with inverted dimensions. Example: Plate ref. NSYMM64 can be used in H600xW400mm enclosures and H400xW600mm enclosures.

Plain Mounting Plates

| Description | Dimensions | | Part No. |
|---|------------|-----------|-----------|
| | H (mm) | W (mm) | |
| Galvanised steel mounting plates A supply of 1 mounting plate with fixing elements | 300 | 200 | NSYMM32 |
| | 300 | 250 | NSYMM3025 |
| | 300 | 300 | NSYMM33 |
| | 400 | 300 | NSYMM43 |
| | 400 | 400 | NSYMM44 |
| | 400 | 800 | NSYMM48 |
| | 500 | 300 | NSYMM53 |
| | 500 | 400 | NSYMM54 |
| | 500 | 500 | NSYMM55 |
| | 600 | 400 | NSYMM64 |
| | 600 | 600 | NSYMM66 |
| | 700 | 500 | NSYMM75 |
| | 800 | 600 | NSYMM86 |
| | 800 | 800 | NSYMM88 |
| | 1000 | 600 | NSYMM106 |
| | 1000 | 800 | NSYMM108 |
| 1000 | 1000 | NSYMM1010 | |
| 1200 | 800 | NSYMM128 | |
| 1200 | 1000 | NSYMM1210 | |

AE Range

Industrial stainless steel enclosures.

IP55/IP66

Technical Data

Material: Stainless steel 1.4301 (AISI 304) or 1.4404 (AISI 316L)
 Finish: Brushed
 Approvals: UL, CSA, VDE amongst others



Compact Enclosures

| Dimensions | | | | | |
|------------|--------|--------|-----------|--------------|----------|
| H (mm) | W (mm) | D (mm) | IP Rating | No. Of Doors | Part No. |
| 300 | 200 | 120 | 66 | 1 | 1001.600 |
| 300 | 200 | 155 | 66 | 1 | 1002.500 |
| 300 | 200 | 155 | 66 | 1 | 1002.600 |
| 300 | 300 | 210 | 66 | 1 | 1003.600 |
| 300 | 380 | 155 | 66 | 1 | 1004.600 |
| 380 | 300 | 210 | 66 | 1 | 1005.500 |
| 380 | 300 | 210 | 66 | 1 | 1005.600 |
| 380 | 380 | 210 | 66 | 1 | 1006.500 |
| 380 | 380 | 210 | 66 | 1 | 1006.600 |
| 500 | 500 | 210 | 66 | 1 | 1007.600 |
| 600 | 380 | 210 | 66 | 1 | 1008.600 |
| 380 | 600 | 210 | 66 | 1 | 1009.600 |
| 600 | 600 | 210 | 66 | 1 | 1010.500 |
| 600 | 600 | 210 | 66 | 1 | 1010.600 |
| 300 | 380 | 210 | 66 | 1 | 1011.600 |
| 760 | 600 | 210 | 66 | 1 | 1012.600 |
| 500 | 500 | 300 | 66 | 1 | 1013.600 |
| 760 | 760 | 300 | 66 | 1 | 1014.600 |
| 500 | 400 | 210 | 66 | 1 | 1015.600 |
| 1000 | 800 | 300 | 66 | 1 | 1016.600 |
| 1200 | 800 | 300 | 66 | 1 | 1017.600 |
| 1000 | 1000 | 300 | 55 | 2 | 1018.600 |
| 1200 | 1000 | 300 | 55 | 2 | 1019.500 |
| 1200 | 1000 | 300 | 55 | 2 | 1019.600 |

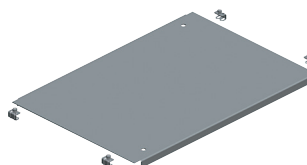
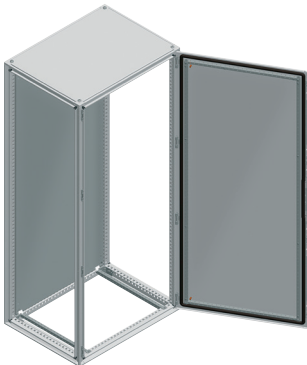
Parts ending 600 are AISI 304.

Parts ending 500 are AISI 316L4.

Accessories

Wall Mounting Brackets

| Description | Wall Distance (mm) | Pack Qty | Part No. |
|----------------------|--------------------|----------|----------|
| Stainless steel 304 | 10 | 4 | 2433.000 |
| Stainless steel 316L | | | 2433.500 |



Spacial SM

IP55

Compact range is a convenient ready-to-use option for floor standing enclosures. It is robust in its design and is equipped with two height-adjustable door rails for fixing cables. It also has a 4 point locking system and a cable gland plate in two parts making it a quick and practical solution.

Technical Data

Material: Sheet steel
Finish: Painted with epoxy-polyester resin, textured RAL 7035 grey

Single Door - Monoblock

| Description | Dimensions | | | Part No. |
|---|---------------------|--------|--------|-------------|
| | H (mm) | W (mm) | D (mm) | |
| Structure: body made from sheet steel, welded rear panel, with the front forming a rigid frame with welded corners. Standard locking system with handle and 5mm double-bar insert. | 1400 | 600 | 400 | NSYSM14640P |
| | 1400 | 800 | 400 | NSYSM14840P |
| | 1600 | 600 | 300 | NSYSM16630P |
| | 1600 | 600 | 400 | NSYSM16640P |
| | 1600 | 800 | 300 | NSYSM16830P |
| | 1600 | 800 | 400 | NSYSM16840P |
| | 1800 | 600 | 400 | NSYSM18640P |
| | 1800 | 800 | 400 | NSYSM18840P |
| | 1800 | 800 | 500 | NSYSM18850P |
| | 2000 | 600 | 400 | NSYSM20640P |
| | 2000 | 800 | 400 | NSYSM20840P |
| | 2000 | 800 | 500 | NSYSM20850P |
| | With mounting plate | | | |

Two Door - Monoblock

| | | | | |
|--|---------------------|------|-----|----------------|
| Structure: body made from sheet steel, welded rear panel, with the front forming a rigid frame with welded corners. Standard locking system with handle and 5mm double-bar insert, double doors are overlapping with system for fixing the left door. | 1200 | 1000 | 300 | NSYSM1210302DP |
| | 1400 | 1200 | 400 | NSYSM1412402DP |
| | 1600 | 1000 | 400 | NSYSM1610402DP |
| | 1600 | 1200 | 400 | NSYSM1612402DP |
| | 1800 | 1200 | 400 | NSYSM1812402DP |
| | 1800 | 1000 | 400 | NSYSM1810402DP |
| | 1800 | 1200 | 500 | NSYSM1812502DP |
| | 1800 | 1600 | 400 | NSYSM1816402DP |
| | 2000 | 1000 | 400 | NSYSM2010402DP |
| | 2000 | 1000 | 500 | NSYSM2010502DP |
| | 2000 | 1200 | 400 | NSYSM2012402DP |
| | 2000 | 1600 | 400 | NSYSM2016402DP |
| | 2000 | 1600 | 500 | NSYSM2016502DP |
| | With mounting plate | | | |

Spacial SF

IP55

Suitable metal floor standing enclosure is made up of: 4 uprights and 2 frames, top and bottom. Thanks to its use of a single, laser-welded, galvanised structure, the enclosure has great robustness. The Spacial SF allows several enclosures to be coupled with full versatility, offering the possibility of creating any desired shape of coupled enclosures.

Technical Data

Material: Sheet steel
Finish: Painted with epoxy-polyester resin, textured RAL 7035 grey

Assembled Modular Floor Enclosures

| Description | Dimensions | | | Part No. |
|--|-----------------------------|--------|--------|----------------|
| | H (mm) | W (mm) | D (mm) | |
| Pre-assembled structure with plain door, rear panel, removable roof and 4 support brackets for the mounting plate. Single door: Standard locking system with handle and 5mm double-bar insert. Double doors: Standard locking system with handle and 5mm double-bar insert, double doors are overlapping with system for fixing the left door. | 1800 | 800 | 600 | NSYSF18860P |
| | 2000 | 600 | 800 | NSYSF20680P |
| | 1800 | 600 | 400 | NSYSF18640P |
| | 1800 | 600 | 600 | NSYSF18660P |
| | 1800 | 800 | 500 | NSYSF18850P |
| | 2000 | 600 | 400 | NSYSF20640P |
| | 2000 | 600 | 800 | NSYSF20680P |
| | 2000 | 800 | 400 | NSYSF20840P |
| | 2000 | 1000 | 400 | NSYSF201040P |
| | 1800 | 1200 | 600 | NSYSF1812602DP |
| | 2000 | 1000 | 400 | NSYSF2010402DP |
| | 2000 | 1200 | 400 | NSYSF2012402DP |
| | 2000 | 1200 | 600 | NSYSF2012602DP |
| | 2 doors with mounting plate | | | |

Side Panels

| Description | Dimensions | | Part No. |
|--|------------|--------|-----------|
| | H (mm) | W (mm) | |
| Set of 2 side panels. Fixed from the outside of the enclosure. Supplied with captive screws. | 1200 | 600 | NSY2SP126 |
| | 1400 | 400 | NSY2SP184 |
| | 1800 | 500 | NSY2SP185 |
| | 1800 | 600 | NSY2SP186 |
| | 2000 | 400 | NSY2SP204 |
| | 2000 | 600 | NSY2SP206 |
| | 2000 | 800 | NSY2SP208 |

Plain Cable Gland Plate

| Description | Dimensions | | Part No. |
|---|------------|--------|----------|
| | H (mm) | W (mm) | |
| Plain plate supplied with fixing elements. Each plate has 2 drill holes with an 8mm diameter, covered with a plug. | 600 | 400 | NSYEC64 |
| | 600 | 800 | NSYEC68 |
| | 800 | 400 | NSYEC84 |
| | 800 | 500 | NSYEC85 |
| | 800 | 600 | NSYEC86 |
| | 1000 | 400 | NSYEC104 |
| | 1200 | 400 | NSYEC124 |
| | 1200 | 600 | NSYEC126 |

1 Entry Cable Gland Plate

| | | | |
|---|------|-----|-----------|
| Plate with 1 entry, adhesive gasket and fixing elements. Each plate has 2 drill holes with an 8mm diameter, covered with a plug. | 1000 | 400 | NSYEC1041 |
| | 1200 | 400 | NSYEC1241 |
| | 1200 | 600 | NSYEC1261 |
| | 800 | 600 | NSYEC861 |

Standard Coupling Kit for SF

| Description | Function | Part No. |
|---|---|----------|
| Coupling kit includes 4 brackets, 2 flat connectors, sealing gasket and fixing elements | Fixing from inside of the enclosures, used for joining enclosures side-by-side or depthwise | NSYSFBK |

Accessories for Spacial SF & Spacial SM

Accessories applicable to both the Spacial SF & SM range of enclosures.

Front Plinths

| Description | Dimensions | | Part No. |
|--|------------|--------|--------------|
| | H (mm) | W (mm) | |
| 4 corners, 2 panels (front and rear), 4 corner covers and fixing elements. Maximum load of 1300kg. | 600 | 100 | NSYSPPF6100 |
| | 600 | 200 | NSYSPPF6200 |
| | 800 | 100 | NSYSPPF8100 |
| | 800 | 200 | NSYSPPF8200 |
| | 1000 | 100 | NSYSPPF10100 |
| | 1000 | 200 | NSYSPPF10200 |
| | 1200 | 100 | NSYSPPF12100 |
| | 1200 | 200 | NSYSPPF12200 |
| | 1600 | 100 | NSYSPPF16100 |
| | 1600 | 200 | NSYSPPF16200 |

Plinth Side Panels

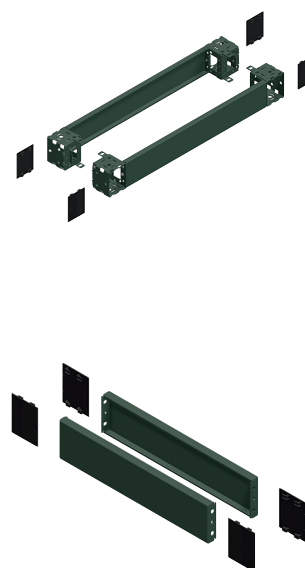
| | | | |
|--|-----|-----|-------------|
| 2 side panels, 4 corner covers and fixing elements | 300 | 100 | NSYSPPS3100 |
| | 300 | 200 | NSYSPPS3200 |
| | 400 | 100 | NSYSPPS4100 |
| | 400 | 200 | NSYSPPS4200 |
| | 500 | 100 | NSYSPPS5100 |
| | 500 | 200 | NSYSPPS5200 |
| | 600 | 100 | NSYSPPS6100 |
| | 600 | 200 | NSYSPPS6200 |
| | 800 | 100 | NSYSPPS8100 |
| | 800 | 200 | NSYSPPS8200 |

Document Pockets

| Description | Type | Part No. |
|-----------------------------|----------------------------------|----------|
| One plastic document pocket | A4 plastic document pocket - D22 | NSYDPA4 |
| | A5 plastic document pocket - D40 | NSYDPA5 |

Lifting Eyes

| Description | Type | Part No. |
|--|---|----------|
| M12 eyebolts screw directly into the structure of the enclosure. Maximum load of 340kg per bolt | Set of 4 lifting eyebolts | NSYSFEB |
| M12 lifting eyebolts, fixed to the enclosure by fixing nuts. 600kg Maximum load (4 brackets). | Set of 4 lifting eyebolts and 4 fixing nuts | NSYSMEB |





CM Compact Range

IP55

Metal enclosures available with or without viewing window.

Technical Data

Material: Mild steel 1.5mm; Door 2.0mm
 Enclosure and doors: Powder coated in textured RAL 7035
 Mounting plate: Zinc plated
 Approvals: UL, CSA, VDE amongst others

Enclosures

| Dimensions | | | No. Of Doors | Part No. |
|------------|--------|--------|--------------|----------|
| H (mm) | W (mm) | D (mm) | | |
| 800 | 600 | 400 | 1 | 5110.500 |
| 1000 | 600 | 400 | 1 | 5111.500 |
| 1200 | 600 | 300 | 1 | 5112.500 |
| 1200 | 600 | 400 | 1 | 5113.500 |
| 1000 | 800 | 300 | 1 | 5114.500 |
| 1000 | 800 | 400 | 1 | 5115.500 |
| 1200 | 800 | 300 | 1 | 5116.500 |
| 1200 | 800 | 400 | 1 | 5117.500 |
| 1000 | 1000 | 300 | 2 | 5118.500 |
| 1200 | 1000 | 300 | 2 | 5119.500 |
| 1200 | 1000 | 400 | 2 | 5120.500 |
| 1400 | 1000 | 300 | 2 | 5121.500 |
| 1400 | 1000 | 400 | 2 | 5122.500 |
| 1200 | 1200 | 400 | 2 | 5123.500 |

System Enclosures SE 8 Range

IP55

Enclosure widths ranging from 600 to 1800mm time-saving assembly work due to the extruded side panels.

Technical Data

Material: Enclosure: Sheet steel 1.5 mm Door: Sheet steel, 2.0mm
 Finish: Enclosure, door and rear panel: Dipcoat-primed, powder-coated (RAL 7035).
 Mounting plate and gland plates: Zinc-plated
 Approvals: UL, CSA, VDE amongst others

Enclosures

| Dimensions | | | | | No. Of Doors | Part No. |
|------------|--------|--------|-----------|---|--------------|----------|
| H (mm) | W (mm) | D (mm) | IP Rating | | | |
| 1800 | 600 | 400 | 55 | 1 | 5830.500 | |
| 1800 | 800 | 400 | 55 | 1 | 5831.500 | |
| 2000 | 800 | 400 | 55 | 1 | 5832.500 | |
| 2000 | 800 | 500 | 55 | 1 | 5833.500 | |
| 2000 | 800 | 600 | 55 | 1 | 5834.500 | |
| 1800 | 1000 | 400 | 55 | 2 | 5840.500 | |
| 1800 | 1200 | 400 | 55 | 2 | 5841.500 | |
| 1800 | 1600 | 400 | 55 | 2 | 5842.500 | |
| 2000 | 1200 | 400 | 55 | 2 | 5843.500 | |
| 2000 | 1200 | 500 | 55 | 2 | 5844.500 | |
| 2000 | 1200 | 600 | 55 | 2 | 5845.500 | |
| 2000 | 1800 | 500 | 55 | 2 | 5846.500 | |

Locks

Fitted as standard with a double-bit lock. This may be changed for:-

Lock inserts (Version A)
 Ergoform-S lock system



VX25. SYSTEM PERFECTION.



Technical Data

| | | |
|---------------------------------------|--|--|
| Material: | Sheet steel | Door 2.0mm; Rear panel 1.5mm |
| Finish: | Enclosure: | Dipcoat-primed |
| | Roof, door and rear panel: | Dipcoat-primed, powder coated on outside, textured paint |
| | Walls: | Dipcoat-primed, powder coated on outside |
| | Mounting plate: | Zinc-plated |
| Colour: | RAL 7035 | |
| Protection category IP to IEC 60 529: | IP55 | |
| Nema protection category: | NEMA 12 | |
| Approvals: | UL, cUL | |
| Supply includes: | Enclosure frame | |
| | Door(s) (r/h hinge, may be swapped to opposite side) | |
| | Roof plate | |
| | Rear panel | |
| | Gland plates | |
| | Mounting plate | |
| | 2 Punched rails 18x39mm | |
| | Lock: 3mm double-bit | |

Enclosures (Baying)

| H (mm) | W (mm) | D (mm) | No. of Doors | Part No. |
|--------|--------|--------|--------------|----------|
| 1200 | 600 | 500 | 1 | 8615.000 |
| 1200 | 800 | 500 | 1 | 8815.000 |
| 1200 | 1200 | 500 | 2 | 8215.000 |
| 1400 | 600 | 500 | 1 | 8645.000 |
| 1400 | 800 | 500 | 1 | 8845.000 |
| 1400 | 1200 | 500 | 2 | 8245.000 |
| 1600 | 600 | 500 | 1 | 8665.000 |
| 1600 | 800 | 500 | 1 | 8865.000 |
| 1600 | 1200 | 500 | 2 | 8265.000 |
| 1800 | 600 | 400 | 1 | 8684.000 |
| 1800 | 800 | 400 | 1 | 8884.000 |
| 1800 | 1000 | 400 | 1 | 8084.000 |
| 1800 | 1000 | 400 | 2 | 8080.000 |
| 1800 | 1200 | 400 | 2 | 8284.000 |
| 1800 | 400 | 500 | 1 | 8485.000 |
| 1800 | 600 | 500 | 1 | 8685.000 |
| 1800 | 800 | 500 | 1 | 8885.000 |
| 1800 | 800 | 500 | 2 | 8880.000 |
| 1800 | 1200 | 500 | 2 | 8285.000 |
| 1800 | 400 | 600 | 1 | 8486.000 |
| 1800 | 600 | 600 | 1 | 8686.000 |
| 1800 | 800 | 600 | 1 | 8886.000 |
| 1800 | 800 | 600 | 2 | 8881.000 |
| 1800 | 1200 | 600 | 2 | 8286.000 |
| 2000 | 600 | 400 | 1 | 8604.000 |
| 2000 | 800 | 400 | 1 | 8804.000 |
| 2000 | 1000 | 400 | 2 | 8004.000 |
| 2000 | 1200 | 400 | 2 | 8204.000 |
| 2000 | 400 | 500 | 1 | 8405.000 |
| 2000 | 600 | 500 | 1 | 8605.000 |
| 2000 | 800 | 500 | 1 | 8805.000 |
| 2000 | 1000 | 500 | 2 | 8005.000 |
| 2000 | 1200 | 500 | 2 | 8205.000 |
| 2000 | 400 | 600 | 1 | 8406.000 |
| 2000 | 600 | 600 | 1 | 8606.000 |
| 2000 | 800 | 600 | 1 | 8806.000 |
| 2000 | 1000 | 600 | 2 | 8006.000 |
| 2000 | 1200 | 600 | 2 | 8206.000 |
| 2000 | 600 | 800 | 1 | 8608.000 |
| 2000 | 800 | 800 | 1 | 8808.000 |
| 2000 | 1200 | 800 | 2 | 8208.000 |
| 2200 | 600 | 600 | 1 | 8626.000 |
| 2200 | 800 | 600 | 1 | 8826.000 |
| 2200 | 1200 | 600 | 2 | 8226.000 |





VX25 Walls

Technical Data

Material: Sheet steel, 1.5mm
 Finish: Dipcoat-primed, powder coated on outside
 Colour: RAL 7035
 Protection category IP to IEC 60 529: IP55

Supply includes: 4 base/plinth trim panels
 Assembly parts

Side Panels

| For Enclosures | | Pack Qty | Part No. |
|----------------|--------|----------|----------|
| H (mm) | D (mm) | | |
| 1200 | 500 | 2 | 8115.245 |
| 1400 | 500 | 2 | 8145.245 |
| 1600 | 500 | 2 | 8165.245 |
| 1600 | 600 | 2 | 8166.245 |
| 1600 | 800 | 2 | 8168.245 |
| 1800 | 400 | 2 | 8184.245 |
| 1800 | 500 | 2 | 8185.245 |
| 1800 | 600 | 2 | 8186.245 |
| 2000 | 400 | 2 | 8104.245 |
| 2000 | 500 | 2 | 8105.245 |
| 2000 | 600 | 2 | 8106.245 |
| 2000 | 800 | 2 | 8108.245 |
| 2200 | 600 | 2 | 8126.245 |
| 2200 | 800 | 2 | 8128.245 |



VX25 Base/Plinth Corner Pieces with Base/Plinth Trim Panels, Front & Rear

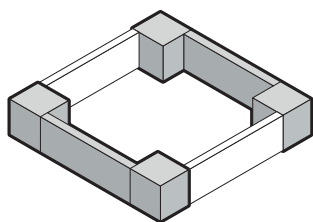
Technical Data

Material: Base/plinth corner piece: Sheet steel
 Base/plinth trim panel front/rear: Sheet steel
 Corner and baying cover: Plastic
 Colour: RAL 9005

Supply includes: 4 base/plinth corner pieces
 4 corner covers
 1 baying cover
 2 base/plinth trim panels, front/rear
 Assembly parts

Base/Plinth

| For Enclosure Width (mm) | 100mm High | 200mm High |
|--------------------------|------------|------------|
| | Part No. | Part No. |
| 300 | 8620.000 | 8620.020 |
| 400 | 8620.001 | 8620.021 |
| 600 | 8620.002 | 8620.022 |
| 800 | 8620.003 | 8620.023 |
| 1000 | 8620.005 | 8620.024 |
| 1200 | 8620.007 | 8620.025 |
| 1600 | 8620.008 | 8620.026 |
| 1800 | 8620.009 | 8620.027 |



VX25 Base/Plinth Trim Panels, Sides

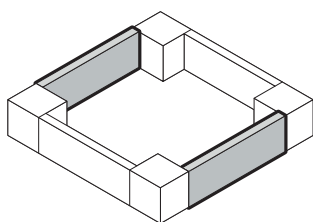
Technical Data

Material: Sheet steel
 Colour: RAL 9005

Supply includes: 4 base/plinth trim panels
 Assembly parts

Base/Plinth

| For Enclosure Width (mm) | 100mm | 200mm |
|--------------------------|----------|----------|
| | Part No. | Part No. |
| 300 | 8620.030 | 8620.040 |
| 400 | 8620.031 | 8620.041 |
| 500 | 8620.032 | 8620.042 |
| 600 | 8620.033 | 8620.043 |
| 800 | 8620.034 | 8620.044 |
| 1000 | 8620.035 | 8620.045 |
| 1200 | 8620.036 | 8620.046 |



Accessories

| Levelling Feet | | | |
|-----------------------------------|-----------|----------|--|
| Description | Pack Qty. | Part No. | |
| Levelling feet | 4 | 4612.000 | |
| Adaptor bracket (sheet steel) | 4 | 8100.770 | |
| Adaptor bracket (stainless steel) | 4 | 8100.771 | |
| Door stay | 1 | 8618.400 | |

In case of an emergency, conventional door stays can block the escape route. This stay is actuated automatically in the event of pressure, releasing the door in both directions. In conjunction with 180° hinges, this ensures that no escape routes are blocked by open doors in the event of an emergency.

| Mounting Plate Infills | |
|------------------------|----------|
| Enclosure Height (mm) | Part No. |
| 1800 | 4590.700 |
| 2000 | 4591.700 |
| 2200 | 4592.700 |

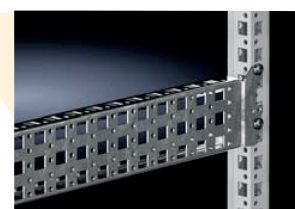
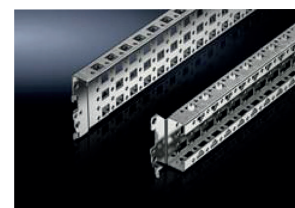
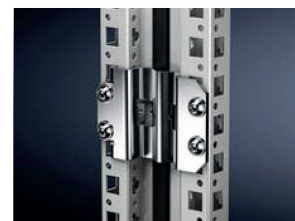
| Baying Technology | | | |
|---|-----------|----------|--|
| Description | Pack Qty. | Part No. | |
| Internal Baying Bracket | 6 | 8617.500 | |
| Internal Baying Block | 6 | 8617.501 | |
| External Baying Connector Steel | 6 | 8617.502 | |
| External Baying Connector Stainless Steel | 6 | 8617.503 | |

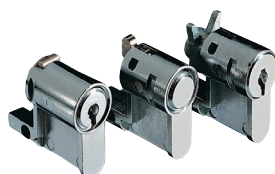
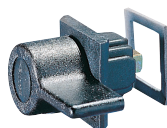
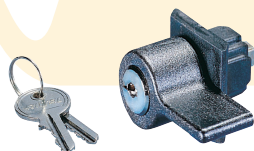
| Rail Systems | | | |
|--------------------|------------------------|--------------------|-----------|
| Type | To Fit Dimensions (mm) | Pack Qty. | Part No. |
| Punched rail outer | 18 x 64mm | 300 | 8617.000 |
| | | 400 | 8617.010 |
| | | 500 | 8617.020 |
| | | 600 | 8617.030 |
| | | 800 | 8617.040 |
| | | 1000 | 8617.050 |
| Punched rail inner | 18 x 39mm | 1200 | 8617.060 |
| | | 400 | 8617.700 |
| | | 500 | 8617.710 |
| | | 600 | 8617.720 |
| | | 800 | 8617.730 |
| | | Punched rail inner | 23 x 64mm |
| 400 | 8617.110 | | |
| 500 | 8617.120 | | |
| 600 | 8617.130 | | |
| 800 | 8617.140 | | |
| 1000 | 8617.150 | | |
| 1200 | 8617.160 | | |
| 1400 | 8617.170 | | |
| 1600 | 8617.180 | | |
| 1800 | 8617.190 | | |
| 2000 | 8617.200 | | |
| 2200 | 8617.210 | | |
| Punched rail inner | 23 x 89mm | 400 | 8100.730 |
| | | 500 | 8100.731 |
| | | 600 | 8100.732 |
| | | 800 | 8100.733 |

| Horizontal Support Strips | | |
|---------------------------|-----------|----------|
| Enclosure Depth (mm) | Pack Qty. | Part No. |
| 400 | 20 | 4694.000 |
| 500 | 20 | 4695.000 |
| 600 | 20 | 4696.000 |
| 800 | 20 | 4697.000 |



Baying Technology





Lock Systems

Version A. Die-cast zinc, length 27mm

| Lock Inserts | |
|---------------------|----------|
| Type | Part No. |
| 7mm square | 2460.000 |
| 8mm square | 2461.000 |
| 7mm triangular | 2462.000 |
| 8mm triangular | 2463.000 |
| Screwdriver | 2464.000 |
| Daimler-Benz insert | 2465.000 |
| 3mm double-bit | 2466.000 |
| Fiat | 2307.000 |

Version B. Die-cast Zinc.

| Cylinder Inserts | |
|----------------------------|----------|
| Type | Part No. |
| Lock No. 3524E with 2 keys | 2571.000 |

Version B.

| Plastic Handles | |
|---|----------|
| Type | Part No. |
| With cylinder insert lock No. 3524E with 2 keys | 2576.000 |
| Without cylinder insert | 2533.000 |

Version B. Diecast Zinc, Plated

| T Handles | |
|---|----------|
| Type | Part No. |
| With cylinder insert lock No. 3524E with 2 keys | 2575.000 |
| Without cylinder insert | 2572.000 |

| Cam Locks | | |
|------------------------------|---------------------------------------|----------|
| Type | | Part No. |
| Die-cast zinc, nickel plated | With double bit insert | 2520.000 |
| | With cylinder insert (lock No. 3524E) | 2530.000 |
| | With double bit insert | 2420.000 |
| GRP format | With cylinder insert (lock No. 3524E) | 2430.000 |
| | With security lock | 2540.500 |

Ergoform-S System

Ease of operation and security are the distinguishing features of the Ergoform-S clip-down handle. The sturdy die-cast zinc lock system is easily fitted, with no need for any machining of the door. The handle springs forward automatically for use. Prepared for installation of 40/45mm semi-cylinders, and all 27mm lock inserts (Version A)

| Standard Handles | |
|------------------|----------|
| Type | Part No. |
| RAL 7035 brown | 2456.500 |
| Brown | 2453.000 |
| Matt nickel | 2452.000 |
| RAL 7035 | 2435.000 |

| Lock Inserts | |
|---|----------|
| Type | Part No. |
| Lock insert lock No. 3524E | 2467.000 |
| Push button insert | 2468.000 |
| Lock and push button insert lock No. 2123 | 2469.000 |

Spacial SMX Series

Stainless steel floor standing monoblock.

IP55/IK10



Technical Data

Material: Stainless steel
 Finish: Scotch Brite®
 Mounting Plate: To be ordered separately

Stainless Steel Floor Standing Monoblock

| External Dimensions | | | No. Of Doors | 304L | 316L |
|---------------------|--------|--------|--------------|--------------|---------------|
| H (mm) | W (mm) | D (mm) | | Part No. | Part No. |
| 1400 | 1000 | 300 | 2 | NSYSMX141030 | - |
| 1600 | 600 | 600 | - | - | - |
| 1600 | 800 | 400 | 1 | NSYSMX16840 | - |
| 1800 | 600 | 400 | 1 | NSYSMX18640 | - |
| 1800 | 600 | 600 | - | - | - |
| 1800 | 800 | 400 | 1 | NSYSMX18840 | NSYSMX18840H |
| 1800 | 1200 | 400 | 2 | NSYSMX181240 | NSYSMX181240H |
| 1800 | 1600 | 400 | 2 | NSYSMX181640 | NSYSMX181640H |
| 2000 | 600 | 500 | - | - | - |
| 2000 | 800 | 400 | - | - | - |
| 2000 | 800 | 500 | 1 | NSYSMX20850 | - |
| 2000 | 800 | 600 | - | - | - |
| 2000 | 1000 | 400 | 2 | NSYSMX201040 | NSYSMX201040H |
| 2000 | 1000 | 600 | - | - | - |
| 2000 | 1200 | 500 | 2 | NSYSMX201250 | NSYSMX201250H |
| 2000 | 1200 | 600 | - | - | - |
| 2000 | 1600 | 600 | 2 | NSYSMX201660 | NSYSMX201660H |



Spacial SFX Series

Stainless steel floor standing modular.

IP55/IK10

Technical Data

Material: Stainless steel
 Finish: Scotch Brite®
 Mounting Plate: To be ordered separately

Stainless Steel Floor Standing Suitable 304L⁽¹⁾

| External Dimensions | | | No. of doors | Suitable Enclosure | Set of 2 Side Panels |
|---------------------|--------|--------|--------------|--------------------|----------------------|
| H (mm) | W (mm) | D (mm) | | Part No. | Part No. |
| 1400 | 1000 | 300 | 2 | - | - |
| 1600 | 600 | 600 | - | - | - |
| 1600 | 800 | 400 | 1 | - | - |
| 1800 | 600 | 400 | 1 | NSYSFX18640 | NSY2SPX184 |
| 1800 | 600 | 600 | - | - | - |
| 1800 | 800 | 400 | 1 | NSYSFX18840 | NSY2SPX184 |
| 1800 | 1200 | 400 | 2 | NSYSFX181240 | NSY2SPX184 |
| 1800 | 1600 | 400 | 2 | - | - |
| 2000 | 600 | 500 | - | NSYSFX20650 | NSY2SPX205 |
| 2000 | 800 | 400 | - | NSYSFX20840 | NSY2SPX204 |
| 2000 | 800 | 500 | 1 | - | - |
| 2000 | 800 | 600 | - | NSYSFX20860 | NSY2SPX206 |
| 2000 | 1000 | 400 | 2 | - | - |
| 2000 | 1000 | 600 | - | NSYSFX201060 | NSY2SPX206 |
| 2000 | 1200 | 500 | 2 | - | - |
| 2000 | 1200 | 600 | - | NSYSFX201260 | NSY2SPX206 |
| 2000 | 1600 | 600 | 2 | - | - |

(1) 316L stainless steel enclosures on request.



Spacial SMX / SFX Series

Accessories

| Type | Part No. |
|--|---------------------|
| Wall-fixing lugs for SMX | NSYFCMX |
| Eyebolts | NSYSMEB |
| Hygienic feet for SMX (Height: 140 to 200mm) | NSYPHX200 |
| Coupling kit | NSYFBK19 + NSYSFXJG |
| Lifting bracket | NSYPUNX |
| Door switch for SFX | NSYDCM20 |



Spacial SMX / SFX Series

Closure Options

| Type | Pack Quantity | Part No. |
|-------------------------|---------------|--------------|
| Spare handle | 1 | NSYMC SX |
| 5mm double-bar insert | 1 | NSYDDB5ME |
| 6mm square insert | 1 | NSYTC6ME |
| 7mm square insert | 1 | NSYTC7ME |
| 8mm square insert | 1 | NSYTC8ME |
| 6.5mm triangular insert | 1 | NSYTT6ME |
| 8mm triangular insert | 1 | NSYTT8ME |
| Padlocking device | 1 | NSYBCME |
| Barrel and key 405ME | 1 | NSYTCL405ME |
| Barrel and key 610 | 1 | NSYTCL610ME |
| Barrel and key 1242E | 1 | NSYTL1242EME |

Top Mounting Canopy

| External dimensions | | SMX | SFX |
|---------------------|--------|-------------|-------------|
| W (mm) | D (mm) | Part No. | Part No. |
| 600 | 400 | NSYSCX6040 | NSYSCX6040 |
| 600 | 500 | NSYSCX6050 | NSYSCX6050 |
| 800 | 400 | NSYSCX8040 | NSYSCX8040 |
| 800 | 500 | NSYSCX8050 | - |
| 800 | 600 | NSYSCX8060 | NSYSCX8060 |
| 1000 | 300 | NSYSCX10030 | - |
| 1000 | 400 | NSYSCX10040 | - |
| 1000 | 600 | NSYSCX10060 | NSYSCX10060 |
| 1200 | 400 | NSYSCX12040 | NSYSCX12040 |
| 1200 | 500 | NSYSCX12050 | - |
| 1200 | 600 | NSYSCX12060 | NSYSCX12060 |
| 1600 | 400 | NSYSCX16040 | - |
| 1600 | 600 | NSYSCX16060 | - |

Stainless Steel Plinths, AISI 304L

| External Dimensions | | | Plinth Height 100mm | | Plinth Height 200mm | |
|---------------------|--------|--------|---|-------------------------------|---|------------------------------------|
| H (mm) | W (mm) | D (mm) | Kit (4 Corners + Front and Back) Part No. | Set of 2 side panels Part No. | Kit (4 Corners + front and Back) Part No. | Set of 2 side panels (x2) Part No. |
| 1400 | 1000 | 300 | NSYSPFX10100 | NSYSPSX3100* | NSYSPFX10200 | NSYSPSX3200* |
| 1600 | 800 | 400 | NSYSPFX8100 | NSYSPSX4100** | NSYSPFX8200 | NSYSPSX4200** |
| 1800 | 600 | 400 | NSYSPFX6100 | NSYSPSX4100** | NSYSPFX6200 | NSYSPSX4200** |
| 1800 | 800 | 400 | NSYSPFX8100 | NSYSPSX4100** | NSYSPFX8200 | NSYSPSX4200** |
| 1800 | 1200 | 400 | NSYSPFX12100 | NSYSPSX4100** | NSYSPFX12200 | NSYSPSX4200** |
| 1800 | 1600 | 400 | NSYSPFX16100* | NSYSPSX4100** | NSYSPFX16200* | NSYSPSX4200** |
| 2000 | 600 | 500 | NSYSPFX6100 | NSYSPSX5100** | NSYSPFX6200 | NSYSPSX5200** |
| 2000 | 800 | 400 | NSYSPFX8100 | NSYSPSX4100** | NSYSPFX8200 | NSYSPSX4200** |
| 2000 | 800 | 500 | NSYSPFX8100 | NSYSPSX5100** | NSYSPFX8200 | NSYSPSX5200** |
| 2000 | 800 | 600 | NSYSPFX8100 | NSYSPSX6100** | NSYSPFX8200 | NSYSPSX6200** |
| 2000 | 1000 | 400 | NSYSPFX10100 | NSYSPSX4100** | NSYSPFX10200 | NSYSPSX4200** |
| 2000 | 1000 | 600 | NSYSPFX10100 | NSYSPSX6100** | NSYSPFX10200 | NSYSPSX6200** |
| 2000 | 1200 | 500 | NSYSPFX12100 | NSYSPSX5100** | NSYSPFX12200 | NSYSPSX5200** |
| 2000 | 1200 | 600 | NSYSPFX12100 | NSYSPSX6100** | NSYSPFX12200 | NSYSPSX6200** |
| 2000 | 1600 | 600 | NSYSPFX16100* | NSYSPSX6100** | NSYSPFX16200* | NSYSPSX6200** |

Stainless Steel Plinths, AISI 316L

| External Dimensions | | | Plinth Height 100mm | | Plinth Height 200mm | |
|---------------------|--------|--------|---|-------------------------------|---|------------------------------------|
| H (mm) | W (mm) | D (mm) | Kit (4 Corners + Front and Back) Part No. | Set Of 2 Side Panels Part No. | Kit (4 Corners + Front and Back) Part No. | Set Of 2 Side Panels (x2) Part No. |
| 1400 | 1000 | 300 | NSYSPFX10100H | NSYSPSX3100H* | NSYSPFX10200H | NSYSPSX3200H* |
| 1600 | 800 | 400 | NSYSPFX8100H | NSYSPSX4100H | NSYSPFX8200H | NSYSPSX4200H |
| 1800 | 600 | 400 | - | NSYSPSX4100H | - | NSYSPSX4200H |
| 1800 | 800 | 400 | NSYSPFX8100H | NSYSPSX4100H | NSYSPFX8200H | NSYSPSX4200H |
| 1800 | 1200 | 400 | NSYSPFX12100H | NSYSPSX4100H | NSYSPFX12200H | NSYSPSX4200H |
| 1800 | 1600 | 400 | NSYSPFX16100H* | NSYSPSX4100H | NSYSPFX16200H* | NSYSPSX4200H |
| 2000 | 600 | 500 | - | NSYSPSX5100H | - | NSYSPSX5200H |
| 2000 | 800 | 400 | NSYSPFX8100H | NSYSPSX4100H | NSYSPFX8200H | NSYSPSX4200H |
| 2000 | 800 | 500 | NSYSPFX8100H | NSYSPSX5100H | NSYSPFX8200H | NSYSPSX5200H |
| 2000 | 800 | 600 | NSYSPFX8100H | NSYSPSX6100H | NSYSPFX8200H | NSYSPSX6200H |
| 2000 | 1000 | 400 | NSYSPFX10100H | NSYSPSX4100H | NSYSPFX10200H | NSYSPSX4200H |
| 2000 | 1000 | 600 | NSYSPFX10100H | NSYSPSX6100H | NSYSPFX10200H | NSYSPSX6200H |
| 2000 | 1200 | 500 | NSYSPFX12100H | NSYSPSX5100H | NSYSPFX12200H | NSYSPSX5200H |
| 2000 | 1200 | 600 | NSYSPFX12100H | NSYSPSX6100H | NSYSPFX12200H | NSYSPSX6200H |
| 2000 | 1600 | 600 | NSYSPFX16100H* | NSYSPSX6100H | NSYSPFX16200H* | NSYSPSX6200H |

*Only for SMX

**For SFX add SF to end of part number

TS8 Baying Systems

Floor mounting stainless steel baying systems.

Technical Data

Material: Stainless steel 1.4301 (AISI 304); Door 2.0mm; Rear panel 1.5mm
 Finish: Enclosure and doors: Brushed
 Mounting plate: Zinc-plated
 Approvals: UL, CSA, Lloyds

IP55



Enclosures

| H (mm) | W (mm) | D (mm) | No. of Doors | Enclosures | Side Panels |
|--------|--------|--------|--------------|------------|-------------|
| | | | | Part No. | Part No. |
| 1800 | 600 | 500 | 1 | 8457.600 | 8700.850 |
| 1800 | 800 | 400 | 1 | 8454.600 | 8700.840 |
| 1800 | 800 | 500 | 1 | 8455.600 | 8700.850 |
| 1800 | 1200 | 400 | 2 | 8456.600 | 8700.840 |
| 1800 | 1200 | 500 | 2 | 8453.600 | 8700.850 |
| 2000 | 600 | 600 | 1 | 8452.600 | 8700.060 |
| 2000 | 1200 | 600 | 2 | 8451.600 | 8700.060 |
| 2000 | 800 | 600 | 1 | 8450.600 | 8700.060 |

Plinths

| Width (mm) | Depth (mm) | Height (mm) | Side Plinths | Front/Rear Plinths |
|------------|------------|-------------|--------------------|--------------------|
| | | | (Pk of 2) Part No. | (Pk of 2) Part No. |
| 600 | 500 | 100 | 8701.050 | 8701.600 |
| | | 200 | 8702.050 | 8702.600 |
| 600 | 600 | 100 | 8701.060 | 8701.600 |
| | | 200 | 8702.060 | 8702.600 |
| 800 | 400 | 100 | 8701.040 | 8701.800 |
| | | 200 | 8702.040 | 8702.800 |
| 800 | 500 | 100 | 8701.050 | 8701.800 |
| | | 200 | 8702.050 | 8702.800 |
| 800 | 600 | 100 | 8701.060 | 8701.800 |
| | | 200 | 8702.060 | 8702.800 |
| 1200 | 400 | 100 | 8701.040 | 8701.200 |
| | | 200 | 8702.040 | 8702.200 |
| 1200 | 500 | 100 | 8701.050 | 8701.200 |
| | | 200 | 8702.050 | 8702.200 |
| 1200 | 600 | 100 | 8701.060 | 8701.200 |
| | | 200 | 8702.060 | 8702.200 |

To make up plinths you must purchase both side plinths and front/rear plinths for appropriate enclosure (width x depth).





Spacial SD / SDF Series

IP55/IK10

The Control and Human-Machine Dialogue enclosures offer, ideal for all your interfaces.

| Spacial SD Compact Control Desk | | | | | | | |
|---------------------------------|--------|--------|-----------------------|------------------|---------------------------|------------------|--|
| External Dimensions | | | With Fixed Rear Panel | | With Removable Rear Panel | | |
| H (mm) | W (mm) | D (mm) | 1 Door Part No. | 2 Doors Part No. | 1 Door Part No. | 2 Doors Part No. | |
| 1000 | 600 | 469 | NSYS6 | - | - | - | |
| 1000 | 600 | 500 | - | - | - | - | |
| 1000 | 800 | 469 | NSYS8 | - | - | - | |
| 1000 | 800 | 500 | - | - | - | - | |
| 1000 | 1000 | 469 | - | NSYS10 | - | - | |
| 1000 | 1200 | 469 | - | NSYS12 | - | - | |
| 1000 | 600 | 600 | - | - | NSYS6R | - | |
| 1000 | 800 | 600 | - | - | NSYS8R | - | |
| 1000 | 1000 | 500 | - | - | - | - | |
| 1000 | 1000 | 600 | - | - | - | NSYS10R | |
| 1000 | 1200 | 500 | - | - | - | - | |
| 1000 | 1200 | 600 | - | - | - | NSYS12R | |

| Spacial SDF Control Desk with Consol | | | | |
|--------------------------------------|--------|--------|-----------------|------------------|
| External Dimensions | | | With Rear Door | |
| H (mm) | W (mm) | D (mm) | 1 Door Part No. | 2 Doors Part No. |
| 1400 | 800 | 845 | NSYSDF8 | - |
| 1400 | 1000 | 845 | - | NSYSDF108 |
| 1400 | 1200 | 845 | - | NSYSDF128 |
| 1400 | 1600 | 845 | - | NSYSDF168 |
| 1400 | 800 | 1045 | NSYSDF810 | - |
| 1400 | 1000 | 1045 | - | NSYSDF1010 |
| 1400 | 1200 | 1045 | - | NSYSDF1210 |
| 1400 | 1600 | 1045 | - | NSYSDF1610 |



One Piece TP Series

IP55/IK08

One-piece consoles TP, ready-to-use component with high protection category IP55 in four different widths. Tool-free assembly of the cover with a lid stay. Compatibility with TS8 system accessories, such as base/plinths and cable entry grommets.

| One Piece TP Consoles | | | | | |
|-----------------------|--------|---------------|------------|----------|----------|
| External Dimensions | | | | | Part No. |
| H (mm) | W (mm) | D Bottom (mm) | D Top (mm) | | |
| 973 | 1000 | 400 | 520 | 6740.500 | |
| 973 | 1200 | 400 | 520 | 6742.500 | |
| 973 | 600 | 400 | 520 | 6746.500 | |
| 973 | 800 | 400 | 520 | 6748.500 | |

Universal TP Series

IP55/IK08

Universal consoles TP, high level of stability and protection category IP55 because the body is more or less manufactured from a single piece

| Universal TP Consoles | | | | | | |
|-----------------------|--------|---------------|------------|-----------------------|----------|----------|
| External Dimensions | | | | | Design | Part No. |
| H (mm) | W (mm) | D Bottom (mm) | D Top (mm) | | | |
| 1300 | 600 | 500 | 417.5 | With short front door | 2694.500 | |
| 1300 | 600 | 500 | 417.5 | With tall front door | 2695.500 | |

| Universal TP Console Desk Section | |
|-----------------------------------|----------|
| H (mm) | Part No. |
| 200 | 2696.500 |



Spacial S3DEX Atex Series

IP66/IK10

Solutions to protect electrical equipment from a potentially explosive atmosphere.

Technical Data

Material: Steel
Finish: Grey RAL 7035

Enclosures for Explosive Atmospheres

| External Dimensions | | | Part No. |
|---------------------|--------|--------|---------------|
| H (mm) | W (mm) | D (mm) | |
| 300 | 200 | 150 | NSYS3DEX3215 |
| 300 | 300 | 200 | NSYS3DEX3320 |
| 400 | 300 | 200 | NSYS3DEX4320 |
| 400 | 400 | 200 | NSYS3DEX4420 |
| 400 | 600 | 200 | - |
| 500 | 400 | 200 | NSYS3DEX5420 |
| 600 | 400 | 200 | - |
| 600 | 400 | 250 | NSYS3DEX6425 |
| 600 | 600 | 250 | NSYS3DEX6625 |
| 700 | 500 | 250 | NSYS3DEX7525 |
| 800 | 600 | 300 | NSYS3DEX8630 |
| 1000 | 800 | 300 | NSYS3DEX10830 |
| 1200 | 800 | 300 | - |

* Mounting plates ordered separately
Stainless steel & GRP versions available on request.



Spacial S3HF EMC Series*

IP55/IK10

Solutions to protect a machine from malfunctions due to electromagnetic disturbance.

Technical Data

Material: Aluzinc 150
Finish: Epoxy-polyester resin Grey RAL 7035

Electromagnetic Protected Steel Enclosures

| External Dimensions | | | Part No. |
|---------------------|--------|--------|---------------|
| H (mm) | W (mm) | D (mm) | |
| 300 | 200 | 150 | - |
| 300 | 300 | 200 | - |
| 400 | 300 | 200 | NSYS3HF4320P |
| 400 | 400 | 200 | - |
| 400 | 600 | 200 | NSYS3HF4620P |
| 500 | 400 | 200 | NSYS3HF5420P |
| 600 | 400 | 200 | NSYS3HF6420P |
| 600 | 400 | 250 | - |
| 600 | 600 | 250 | NSYS3HF6625P |
| 700 | 500 | 250 | NSYS3HF7525P |
| 800 | 600 | 300 | NSYS3HF8630P |
| 1000 | 800 | 300 | NSYS3HF10830P |
| 1200 | 800 | 300 | NSYS3HF12830P |

* Delivered with a plain mounting plate.
Fixing lugs, ref. NSYPFCR to be ordered separately (1 set of 4 lugs).
Floor standing version available on request.





Spacial S3HD - Outdoor Heavy Duty Enclosures

IP66/IK10

Spacial S3HD, Outdoor Heavy Duty (HD), enclosures are made of coated steel and are designed for outdoor private areas with harsh environments. They are engineered to resist aggressive environments achieving the anti-corrosion certification class C4H, ISO 12944:1999.

Technical Data

Material: Heavy duty steel with anti-corrosive coating
 Finish: 100% polyester powder RAL 7035 grey

Spacial S3HD Wall Mounting Enclosures

| Description | Dimensions | | | Part No. |
|---|------------|--------|--------|---------------------------------------|
| | H (mm) | W (mm) | D (mm) | |
| HD steel with anti-corrosive coating | 343 | 200 | 180 | NSYS3HD3215 |
| Structured finish, 100% polyester powder. | 448 | 300 | 230 | NSYS3HD4320 |
| | 548 | 400 | 230 | NSYS3HD5420 |
| | 653 | 400 | 280 | NSYS3HD6425 |
| Outdoor and/or harsh environments | 658 | 600 | 330 | Without mounting plate NSYS3HD6630 |
| | 753 | 500 | 280 | NSYS3HD7525 |
| - Curved canopy | 858 | 600 | 330 | NSYS3HD8630 |
| - 3mm double bar lock | 862 | 800 | 430 | NSYS3HD8840 |
| - A4 plastic document pocket | 1062 | 600 | 430 | NSYS3HD10640 |
| - Door retainer - Aluminium | 1062 | 800 | 430 | NSYS3HD10840 |

Spacial S3HD Accessories

| Description | Dimensions | | Part No. |
|---|------------|--------|-----------------|
| | H (mm) | W (mm) | |
| Mounting plates | 343 | 200 | NSYMM32 |
| | 448 | 300 | NSYMM43 |
| | 548 | 400 | NSYMM54 |
| | 653 | 400 | NSYMM64 |
| | 658 | 600 | NSYMM66 |
| | 753 | 500 | NSYMM75 |
| | 858 | 600 | NSYMM86 |
| | 862 | 800 | NSYMM88 |
| | 1062 | 600 | NSYMM106 |
| | 1062 | 800 | NSYMM108 |
| 4 wall fixing lugs with fixings and gasket. Stainless steel AISI 304L Maximum load 150kg | | | NSYAEFPFXSC |
| Material: Zamack Anti-corrosive coating Delivered with 3mm double bar metal key Heavy duty padlock | | | NSYAEPLPADS3DHD |
| Includes a stainless steel anti-insect filter IP55 HD Metal Grille | | | NSYCAG223LFHD |

Klippon® TB MH - Multi Hinge

Stainless steel enclosures for use in areas exposed to explosion hazards.

IP66/IP67

Weidmüller 

Technical Data

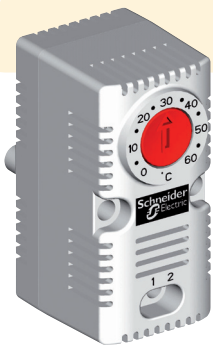
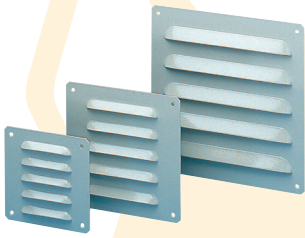
Material: Stainless steel 1.4404 (316L)
 Equipped with up to 4 gland plates
 Gasket is protected against compression
 Finish: International approvals

Stainless Steel

| Ref | | H (mm) | W (mm) | D (mm) | Enclosures With | | |
|-------|--------------------|-----------|-----------|-----------|--------------------------|--------------------------|----------------------------|
| | | | | | 2 Gland Plate Part No | 4 Gland Plate Part No | Mounting Plate Part No. |
| TB10 | KTB MH 221513 S4E* | 229 | 152 | 133 | 1194570000 | 1194590000 | 1193810000 |
| TB10A | KTB MH 262615 S4E* | 260 | 260 | 150 | 1194620000 | 1194640000 | 1193820000 |
| TB10A | KTB MH 262620 S4E* | 260 | 260 | 200 | 1194670000 | 1194690000 | 1193820000 |
| TB11 | KTB MH 303015 S4E* | 306 | 306 | 150 | 1194720000 | 1194740000 | 1193830000 |
| TB11 | KTB MH 303020 S4E* | 306 | 306 | 200 | 1194770000 | 1194790000 | 1193830000 |
| TB11A | KTB MH 352615 S4E* | 350 | 260 | 150 | 1194820000 | 1194840000 | 1193840000 |
| TB11A | KTB MH 352620 S4E* | 350 | 260 | 200 | 1194870000 | 1194890000 | 1193840000 |
| | KTB MH 403015 S4E* | 400 | 300 | 150 | 1194920000 | 1194940000 | 1193850000 |
| | KTB MH 403020 S4E* | 400 | 300 | 200 | 1194970000 | 1194990000 | 1193850000 |
| TB12 | KTB MH 453815 S4E* | 458 | 382 | 150 | 1195020000 | 1195040000 | 1193860000 |
| TB12 | KTB MH 453820 S4E* | 458 | 382 | 200 | 1195070000 | 1195090000 | 1193860000 |
| TB12A | KTB MH 484815 S4E* | 480 | 480 | 150 | 1195120000 | 1195140000 | 1193870000 |
| TB12A | KTB MH 484820 S4E* | 480 | 480 | 200 | 1195170000 | 1195190000 | 1193870000 |
| TB12B | KTB MH 553515 S4E* | 550 | 350 | 150 | 1195220000 | 1195240000 | 1193880000 |
| TB12B | KTB MH 553520 S4E* | 550 | 350 | 200 | 1195270000 | 1195290000 | 1193880000 |
| TB12D | KTB MH 624515 S4E* | 620 | 450 | 150 | 1195320000 | 1195340000 | 1193890000 |
| TB12D | KTB MH 624520 S4E* | 620 | 450 | 200 | 1195370000 | 1195390000 | 1193890000 |
| TB13 | KTB MH 765015 S4E* | 762 | 508 | 150 | 1195420000 | 1195440000 | 1193900000 |
| TB13 | KTB MH 765020 S4E* | 762 | 508 | 200 | 1195470000 | 1195490000 | 1193900000 |
| TB14 | KTB MH 916115 S4E* | 914 | 610 | 150 | 1195520000 | 1195540000 | 1193910000 |
| TB14 | KTB MH 916120 S4E* | 914 | 610 | 200 | 1195570000 | 1195590000 | 1193910000 |
| | KTB MH 987420 S4E* | 980 | 740 | 200 | 1195620000 | 1195640000 | 1193920000 |

Note : * = No. of gland plates i.e. 2 or 4 on table above





Climasys

Many risks are incurred by not having a suitable thermal solution, which can affect the service life of the components and the performance of the facilities to the extent of causing a halt in production. The Climasys range provides a solution for your every thermal management need for all environments.

Metal Outlet Grille IP23

| Cut-Out Dimensions | | External Dimensions | | Part No. |
|--------------------|--------|---------------------|--------|-----------------|
| H (mm) | W (mm) | H (mm) | W (mm) | |
| 104 | 95 | 120 | 120 | NSYCAG104X95LM |
| 130 | 110 | 160 | 160 | NSYCAG130X110LM |
| 170 | 190 | 220 | 220 | NSYCAG170X190LM |

Outlet Grille with Filter IP54

| Cut-Out Dimensions | | External Dimensions | | | Material | Part No. |
|--------------------|--------|---------------------|--------|--------|---|---------------|
| H (mm) | W (mm) | H (mm) | W (mm) | D (mm) | | |
| 125 | 125 | 170 | 150 | 15 | Injected thermoplastic (ASA PC) RAL 7035 | NSYCAG125LPPF |
| 223 | 223 | 268 | 248 | 18 | | NSYCAG223LPPF |
| 92 | 92 | 137 | 117 | 13 | | NSYCAG92LPPF |
| 291 | 291 | 336 | 316 | 18 | | NSYCAG291LPPF |

Thermostats

| Type | Setting Range | Controls | Part No. |
|---------------------------------------|---------------|---|-----------|
| Thermostat - NC Heat - Red | | Control a resistance heater or an alarm | NSYCCOTHC |
| Thermostat - NO Vent - Blue | 0 to 60°C | Control a fan or an alarm | NSYCCOTH0 |
| Double thermostat - NC Heat & NO Vent | | Control a resistance heater and a fan | NSYCCOTHD |

Fan with Filter IP54 - RAL 7035 Grey

| Flow Rate (Voltage) | Cut-Out Dimensions | | External Dimensions | | | Part No. |
|---------------------|--------------------|--------|---------------------|--------|--------|-----------------|
| | H (mm) | W (mm) | H (mm) | W (mm) | D (mm) | |
| 38m³/h (115V) | 92 | 92 | 137 | 117 | 49 | NSYCVF38M115PF |
| 38m³/h (230V) | 92 | 92 | 137 | 117 | 49 | NSYCVF38M230PF |
| 85m³/h (115V) | 125 | 125 | 170 | 150 | 62 | NSYCVF85M115PF |
| 85m³/h (230V) | 125 | 125 | 170 | 150 | 62 | NSYCVF85M230PF |
| 165m³/h (230V) | 223 | 223 | 268 | 248 | 104 | NSYCVF165M230PF |
| 300m³/h (115V) | 223 | 223 | 268 | 248 | 116 | NSYCVF300M115PF |
| 300m³/h (230V) | 223 | 223 | 268 | 248 | 116 | NSYCVF300M230PF |
| 560m³/h (230V) | 291 | 291 | 336 | 316 | 161 | NSYCVF560M230PF |
| 850m³/h (230V) | 291 | 291 | 336 | 316 | 161 | NSYCVF850M230PF |

24V DC available on request.

Spacial CRS - Ultra Thin Resistance Heaters

Ultra thin resistance heaters have been designed to resolve condensation problems in the most complex installations. Is your enclosure short of space? Does your mounting plate make it impossible to install a conventional resistor? Do you not want to take out the equipment? Discover the benefits of this new offer and its numerous mounting solutions.

Technical Data

Material: Silicon reinforced with fibreglass
 Colour: Red (heaters), black (wires)
 Certifications: VDE, LR
 Supply: 6 self-adhesive velcro pads, 6 plastic fixings, 4 telequick nuts, 4 clip-on nuts, fixing hardware

Spacial S3HD Wall Mounting Enclosures

| Power (W) | Voltage (V) | Dimensions | | | Part No. |
|-----------|-------------|------------|--------|--------|------------------|
| | | H (mm) | W (mm) | D (mm) | |
| 10 | 120 | 130 | 250 | 1.6 | NSYCRS 10W 120V |
| | 240 | 130 | 250 | 1.6 | NSYCRS 10W 240V |
| 25 | 120 | 130 | 250 | 1.6 | NSYCRS 25W 120V |
| | 240 | 130 | 250 | 1.6 | NSYCRS 25W 240V |
| 50 | 120 | 200 | 320 | 1.6 | NSYCRS 50W 120V |
| | 240 | 200 | 320 | 1.6 | NSYCRS 50W 240V |
| 100 | 120 | 280 | 450 | 1.6 | NSYCRS 100W 120V |
| | 240 | 280 | 450 | 1.6 | NSYCRS 100W 240V |
| 200 | 120 | 400 | 650 | 1.6 | NSYCRS 200W 120V |
| | 240 | 400 | 650 | 1.6 | NSYCRS 200W 240V |

ClimaSys CU

Cooling units for harsh environments, where ambient temperatures can reach up to 55°C. The unit's integrated alarm system will signal you in the event of any operational anomaly.

IP55



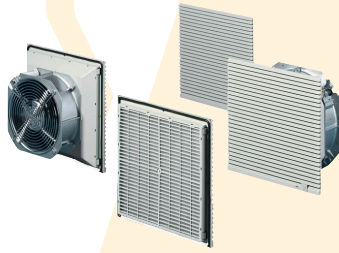
| SLIM Models | | UL Steel | UL Stainless Steel |
|------------------------------------|---------|-----------------|--------------------|
| Cooling Power L35-L35 W (Btu/h) | Voltage | Part No. | Part No. |
| 1100 (3753) | 230V | NSYCUS1K1UL | NSYCUSX1K1UL |
| 1100 (3753) | 400V | NSYCUS1K12P4UL | NSYCUSX1K12P4UL |
| 1500 (5118) | 230V | NSYCUS1K5UL | NSYCUSX1K5UL |
| 1500 (5118) | 400V | NSYCUS1K52P4UL | NSYCUSX1K52P4UL |
| 2000 (6824) | 230V | NSYCUS2KUL | NSYCUSX2KUL |
| 2000 (6824) | 400V | NSYCUS2K3P460UL | NSYCUSX2K3P4UL |
| 2500 (8530) | 230V | NSYCUS2K5UL | NSYCUSX2K5UL |
| 2500 (8530) | 400V | NSYCUS2K53P4UL | NSYCUSX2K53P4UL |
| 3200 (10919) | 230V | NSYCUS3K2UL | NSYCUSX3K2UL |
| 3200 (10919) | 400V | NSYCUS3K23P4UL | NSYCUSX3K23P4UL |

ClimaSys CR Insulated Resistance Heaters

| Insulated Resistance Heaters - 2 Poles | | |
|--|-------------|-----------------|
| Power (W) | Voltage | Part No. |
| 10 | 110-250V AC | NSYCR10WU2C |
| 10 | 12-24V DC | NSYCR10WU1C |
| 20 | 110-250V AC | NSYCR20WU2C |
| 20 | 12-24V DC | NSYCR20WU1C |
| Insulated Resistance Heaters - 4 Poles | | |
| Power (W) | Voltage | Part No. |
| 55 | 110-250V AC | NSYCR50WU2C |
| 55 | 12-24V DC | NSYCR50WU1C |
| 55 | 270-420V AC | NSYCR50WU3C |
| 100 | 110-250V AC | NSYCR100WU2C |
| 100 | 12-24V DC | NSYCR100WU1C |
| 100 | 270-420V AC | NSYCR100WU3C |
| 147 | 110-250V AC | NSYCR150WU2C |
| 147 | 12-24V DC | NSYCR150WU1C |
| Insulated Resistance Heater with Fan | | |
| Power (W) | Voltage | Part No. |
| 177 | 230V AC | NSYCR170W230VVC |
| Thermofans | | |
| Power (W) | Voltage | Part No. |
| 400/550 | 120V AC | NSYCRP1W120VTVC |
| 400/550 | 230V AC | NSYCRP1W230VTVC |

ClimaSys CR Aluminium Resistance Heaters

| Aluminium Resistance Heaters - Power Cord | | |
|---|-------------|-------------|
| Power (W) | Voltage | Part No. |
| 10 | 12-24V DC | NSYCR10WU1 |
| 10 | 110-250V AC | NSYCR10WU2 |
| 20 | 12-24V DC | NSYCR20WU1 |
| 20 | 110-250V AC | NSYCR20WU2 |
| Aluminium Resistance Heaters - Terminal Block | | |
| Power (W) | Voltage | Part No. |
| 20 | 270-420V AC | NSYCR20WU3 |
| 55 | 12-24V DC | NSYCR55WU1 |
| 55 | 110-250V AC | NSYCR55WU2 |
| 55 | 270-420V AC | NSYCR55WU3 |
| 90 | 12-24V DC | NSYCR100WU1 |
| 90 | 110-250V AC | NSYCR100WU2 |
| 90 | 270-420V AC | NSYCR100WU3 |
| 150 | 12-24V DC | NSYCR150WU1 |
| 150 | 110-250V AC | NSYCR150WU2 |
| 150 | 270-420V AC | NSYCR150WU3 |



Fan & Filter Units

IP43. Can be upgraded by using sealing frames and fine filter mats.

SK Series

| Unhindered Air Flow (m3/hr) | Cut-Out Dims (mm) | Voltage | Part No. |
|-----------------------------|-------------------|---------|----------|
| 20 | 92 x 92 | 24V DC | 3237.124 |
| | | 115V AC | 3237.110 |
| | | 230V AC | 3237.100 |
| 55 | 124 x 124 | 24V DC | 3238.124 |
| | | 115V AC | 3238.110 |
| | | 230V AC | 3238.100 |
| 105 | 177 x 177 | 24V DC | 3239.124 |
| | | 115V AC | 3239.110 |
| | | 230V AC | 3239.100 |
| 180 | 224 x 224 | 24V DC | 3240.124 |
| | | 115V AC | 3240.110 |
| | | 230V AC | 3240.100 |
| 230 | 224 x 224 | 24V DC | 3241.124 |
| | | 115V AC | 3241.110 |
| | | 230V AC | 3241.100 |
| 550 | 292 x 292 | 115V AC | 3243.110 |
| | | 230V AC | 3243.100 |
| | | 115V AC | 3244.110 |
| 700 | 292 x 292 | 115V AC | 3244.110 |
| | | 230V AC | 3244.100 |

DC versions also available.

Outlet Filters

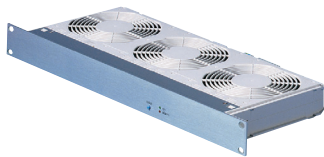
| Cut-Out Dims (mm) | Part No. |
|-------------------|----------|
| 92 x 92 | 3237.200 |
| 124 x 124 | 3238.200 |
| 177 x 177 | 3239.200 |
| 224 x 224 | 3240.200 |
| 292 x 292 | 3243.200 |

Spare Filter Mats (Packs of 5)

| For | Type | Part No. |
|-------------------|----------|----------|
| 3237.... | Standard | 3321.700 |
| 3238.... | Standard | 3322.700 |
| 3239.... | Standard | 3171.100 |
| | Fine | 3181.100 |
| 3240..../3241.... | Standard | 3172.100 |
| | Fine | 3182.100 |
| 3243..../3244.... | Standard | 3173.100 |
| | Fine | 3183.100 |

Rack Mounted Fans

| Unhindered Air Flow (m3/hr) | Voltage | Part No. |
|-----------------------------|-------------|----------|
| 320 | 230V AC | 3340.230 |
| | 115-230V AC | 3342.500 |
| 480 | 24V DC | 3342.500 |
| | 230V AC | 3342.230 |



Cooling Units

| Blue e Cooling Units | | | |
|----------------------|--------------------------|---------|----------|
| Mounting | Total Cooling Output (W) | Voltage | Part No. |
| Side | 360 | 230V | 3302.100 |
| | 550 | 230V | 3303.500 |
| | 850 | 230V | 3361.500 |
| | 1100 | 230V | 3304.500 |
| | 1600 | 230V | 3305.500 |
| | 2200 | 400V | 3328.540 |
| Roof | 550 | 230V | 3382.500 |
| | 770 | 230V | 3359.500 |
| | 1000 | 230V | 3383.500 |
| | 1500 | 230V | 3384.500 |
| | 2000 | 400V | 3385.540 |

| Blue e+ Cooling Units | | | |
|-----------------------|--------------------------|---------------|----------|
| Mounting | Total Cooling Output (W) | Voltage | Part No. |
| Side | 1600 | 110V - 240V | 3185.830 |
| | 2000 | 1~50Hz / 60Hz | 3186.930 |
| | | 380V - 48 V | |
| | 2600 | 3~50Hz / 60Hz | 3187.930 |
| | 4200 | 380V - 480V | 3188.940 |
| | 5800 | 3~50Hz / 60Hz | 3189.940 |

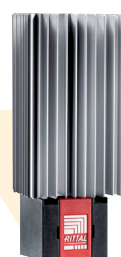
| Air-Air Heat Exchangers | | | |
|-----------------------------|---------|----------|--|
| Specific Thermal Output W/k | Voltage | Part No. | |
| 17.5 | 230V | 3126.100 | |
| 30.0 | 230V | 3127.100 | |
| 45.0 | 230V | 3128.100 | |
| 60.0 | 230V | 3129.100 | |
| 90.0 | 230V | 3130.100 | |

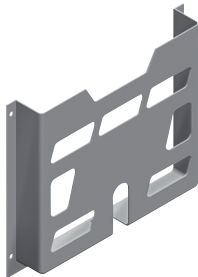
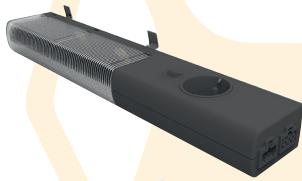
| Air-Water Heat Exchangers | | | |
|-----------------------------|---------|----------|--|
| Useful Cooling Output Watts | Voltage | Part No. | |
| 1000 | 230V | 3364.100 | |
| 3000 | 230V | 3374.100 | |

Heaters and Controls

| Heaters | | | |
|---------------------------------|-------------|----------|--|
| Continuous Thermal Output Watts | Voltage | Part No. | |
| 10 | 110-240V AC | 3105.310 | |
| 20 | | 3105.320 | |
| 30 | | 3105.330 | |
| 50 | | 3105.340 | |
| 75 | | 3105.350 | |
| 100 | | 3105.360 | |
| 150 | | 3105.370 | |

| Controls | | | |
|------------|-------------------------|----------|--|
| Type | Volts | Part No. | |
| Thermostat | 24-230V AC 24-60V DC | 3110.000 | |
| Hygrostat | 24-230V AC/DC | 3118.000 | |





Lighting & Power Sockets

Multi-Fixing 10W LED Lamps - 640 Lumens

| Type | Voltage | Socket | Lamp | | Cables | |
|--|---------|---------|-------------|----------|--------------|------------------------|
| | | | Part No. | Standard | Power (3m) | Interconnection (1.5m) |
| With socket | 230V AC | Schuko | NSYLAMLDS | IEC | NSYLAM3M | NSYLAM1M |
| With socket | 230V AC | UTE | NSYLAMLDF | IEC | NSYLAM3M | NSYLAM1M |
| With socket | 230V AC | British | NSYLAMLDB | IEC | NSYLAM3M | NSYLAM1M |
| With socket | 230V AC | USA | NSYLAMLDU | UL | NSYLAM3MUL | NSYLAM1MUL |
| Without socket | 230V AC | - | NSYLAMLD | IEC | NSYLAM3M | NSYLAM1M |
| Without socket | 230V AC | - | NSYLAMLD | UL | NSYLAM3MUL | NSYLAM1MUL |
| Without socket/with Presence detection | 230V AC | - | NSYLAMLDD | IEC | NSYLAM3M | NSYLAM1M |
| Without socket | 48V DC | - | NSYLAMLDVDC | IEC | NSYLAM3MDC | NSYLAM1MDC |
| Without socket | 48V DC | - | NSYLAMLDVDC | UL | NSYLAM3MDCUL | NSYLAM1MDCUL |

Cost-Effective LED Lamps

| Dimensions | | | Power | Lumen Output | Voltage | Frequency | Part No. |
|-----------------|---------------------|--|-------|--------------|-------------|-----------|----------------|
| (mm) | (in) | | | | | | |
| 311 x 30.5 x 22 | 12.20 x 1.20 x 0.88 | | 5W | 500lm | 120-230V AC | 50-60Hz | NSYLAMT5LD1 |
| 560 x 30.5 x 22 | 22.05 x 1.20 x 0.88 | | 10W | 1100lm | 120-230V AC | 50-60Hz | NSYLAMT5LD2 |
| 310 x 30.5 x 22 | 12.20 x 1.20 x 0.87 | | 5W | 470lm | 24-48V DC | - | NSYLAMT5LD1VDC |

Portable LED lamp

| Type | Power | Lumen Output | Voltage | Part No. |
|-------------|-------|--------------|---------|--------------|
| With switch | 10W | 1100lm | 230V AC | NSYLAMPORLTD |

Door Accessories - Floor-Standing Only

Metal Document Pocket

| Enclosure Width (mm) | Part No. |
|----------------------|----------|
| 600 | NSYSDP6M |
| 800 | NSYSDP8M |

Folding Support Tray

| Spacial Width (mm) | Part No. |
|--------------------|----------|
| 500 | NSYSDT5 |
| 600 | NSYSDT6 |
| 800 | NSYSDT8 |

Door Cross Rails

| Nominal Width (mm) | Part No. |
|--------------------|-----------|
| 400 | NSYSDCR4 |
| 500 | NSYSDCR5 |
| 600 | NSYSDCR6 |
| 800 | NSYSDCR8 |
| 1000 | NSYSDCR10 |

Door Switches

| For Ranges | Part No. |
|------------|-----------|
| SF - SFX | NSYDCM20 |
| SM | NSYMDCM20 |
| PLA | NSYINLPLA |

Door Retainer

| Door Stop Model | For Enclosures | Limit | Part No. |
|-----------------|----------------|--------------|-----------|
| Mechanical | Spacial SF | 90° and 140° | NSYSFMDR |
| | Spacial SM | 90° | NSYSMDR |
| Pneumatic | Spacial SF | 120° | NSYSFNDR |
| | Spacial SM | 90° and 140° | NSYSMNDR* |

* Compatible with SF.

Door Accessories - Wall Mount Only

Door Retainers

| Description | Part No. |
|---|---------------|
| Steel door retainer for Spacial wall-mounting steel enclosure | NSYAEDRSCST |
| Polyamide door retainer for Spacial wall-mounting steel enclosure | NSYAEDRS3DPA6 |

Door Switch

| For Ranges | Part No. |
|------------|-----------|
| S3D, S3X | NSYINLCRN |

Plastic Document Pockets - Floor Standing & Wall Mounted

| Document Format | Part No. |
|-----------------|-------------------------|
| A5 | NSYDPA5 |
| A4 | NSYDPA4 |
| A4 | NSYDPA44 ⁽¹⁾ |
| A3 | NSYDPA3 |

⁽¹⁾ Not compatible with 19" chassis or modular enclosure.

For screening off individual enclosures in a suite

Solid Divider Panels

| Enclosure (mm) | | Part No. |
|----------------|-------|----------|
| Height | Width | |
| 1800 | 400 | 8609.840 |
| 1800 | 500 | 8609.850 |
| 1800 | 600 | 8609.860 |
| 2000 | 400 | 8609.040 |
| 2000 | 500 | 8609.050 |
| 2000 | 600 | 8609.060 |
| 2000 | 800 | 8609.080 |
| 2200 | 600 | 8609.260 |

LED Lighting System

| Type | Power Consumption | Lumen Output | Installation Length (mm) | Part No. |
|-----------------------------------|--|--------------|--------------------------|----------|
| LED with socket & motion detector | 13W | 1200lm | 437 | 2500.310 |
| LED with motion detector | | | | 2500.300 |
| LED with socket | | | | 2500.210 |
| LED without socket | 11W | 900lm | 437 | 2500.200 |
| LED without socket. 24V | | | | 2500.220 |
| LED without socket | 7W | 600lm | 337 | 2500.110 |
| LED without socket | 5W | 400lm | 262 | 2500.100 |
| Door operated switch | For simple, time-saving connection of the LED system light | | | 2500.460 |
| Door operated switch UL Version | | | | 2500.470 |

For secure cable routing from enclosure or mounting plate to door.

Cable Conduit & Conduit Holder

| Description | Diameter (mm) | Packs of | Part No. |
|----------------|---------------|----------|----------|
| Conduit | 16 | 25m | 2595.000 |
| | 29 | 25m | 2589.000 |
| | 36 | 25m | 2596.000 |
| | 48 | 25m | 2590.000 |
| Conduit Holder | 16 | 20 | 2593.000 |
| | 29 | 20 | 2591.000 |
| | 36 | 20 | 2594.000 |
| | 48 | 20 | 2592.000 |

Document Holders

| Description | Door Width (mm) | Part No. |
|----------------------------------|-----------------|----------|
| Wiring plan lecturn | 400 | 4120.000 |
| | 500 | 4114.000 |
| | 600 | 4115.000 |
| Wiring plan pocket - sheet steel | 600 | 4116.000 |
| | 800 | 4118.000 |
| | 1000 | 4124.000 |
| | A5 Landscape | 2515.000 |
| Wiring plan pocket - plastic | A4 Portrait | 2514.000 |
| | A3 Landscape | 2513.000 |
| Disk box | 20 | 2446.000 |

Ancillaries

| Description | Pack Qty. | Part No. |
|------------------|-----------|----------|
| Lifting brackets | 4 | 4540.000 |
| Eye bolts | 4 | 4568.000 |
| Levelling feet | 4 | 4612.000 |
| Door stay | 1 | 8618.400 |

