

6

CABLE MANAGEMENT

Contents

Manufacturer	Page No
Tri-Rated Cable	6.2
Cable Trunking	
ABB	6.4
Iboco	6.5
Betaduct	6.8
Cable Termination	
Weidmüller	6.9
Cembre	6.10
Davico	6.11
Partex	6.12
Tools	
Partex	6.14
Weidmüller	6.15
Cable Ties & Marking	
Partex	6.16
Busbar	
Eriflex	6.17
Weidmüller	6.19
Insulators	
Eriflex	6.19
Distribution Blocks	
Eriflex	6.20
Weidmüller	6.20
Earthing	
Eriflex	6.21

Tri-Rated Cable

Supplied in 100m reels.

- Approval - CSA, UL B BS6231

Single core, flexible plain annealed copper wires, heat resistant PVC insulation Maximum working temperature 105°C.

Technical Data

Cross Section Area mm ²	URL Style	No. & Size of Wires	AWG	Nominal O/D mm	Max. Current Rating	Approx. Weight (kg/km)
0.50	1015	16/0.20	22	2.70	11	13
0.75	1015	24/0.20	20	2.90	14	15
1.00	1015	32/0.20	18	3.10	17	19
1.50	1015	30/0.25	16	3.40	21	25
2.50	1015	50/0.25	14	3.80	30	35
4.00	1015	56/0.30	12	4.40	41	52
6.00	1015	64/0.30	10	5.10	53	76
10.00	1026	80/0.40	8	6.80	75	135
16.00	1283	126/0.40	6	9.20	100	213
25.00	1283	196/0.40	4	10.60	136	300

The current rating shown above are based on a single cable in free air, the maximum conductor temperature being 105°C and an ambient temperature of 45°C.

Temperature De-Rating Factors

Ambient Temp. (°C)	50	55	60	65	70	75
Factor	0.97	0.90	0.82	0.75	0.63	0.52

Bunching De-Rating Factors

No. of Cores	2	3	4	5	6	8	10
Factor	0.80	0.70	0.65	0.60	0.56	0.50	0.46

To calculate the de-rated figure multiply the original current rating by the factor shown in the relevant table.

Tri-Rated Cable Ordering Chart

Complete the part number by following these two easy steps:-

Select **Cable Size 1** ie 1.5 **Colour 2** ie BLACK

1 Cable Size	2 Colour												Part No.	Insert Colour
	Red	Black	Blue	Yellow	Earth	Grey	Green	White	Orange	Brown	Pink	Voilet		
0.5													TR0.5	<input type="checkbox"/>
0.75													TR0.75	<input type="checkbox"/>
1.0													TR1.0	<input type="checkbox"/>
1.5													TR1.5	<input type="checkbox"/>
2.5													TR2.5	<input type="checkbox"/>
4.0													TR4.0	<input type="checkbox"/>
6.0													TR6.0	<input type="checkbox"/>
10.0													TR10.0	<input type="checkbox"/>
16.0													TR16.0	<input type="checkbox"/>
25.0													TR25.0	<input type="checkbox"/>
35.0													TR35.0	<input type="checkbox"/>
50.0													TR50.0	<input type="checkbox"/>
70.0													TR70.0	<input type="checkbox"/>
95.0													TR95.0	<input type="checkbox"/>
120.0													TR120.0	<input type="checkbox"/>



Part No. Completion

When ordering complete the Part No. by adding the following:-

Colour	Part No.
Red	Red
Black	Black
Blue	Blue
Yellow	Yellow
Earth	Earth
Grey	Grey
Green	Green
White	White
Orange	Orange
Brown	Brown
Pink	Pink
Voilet	Voilet

Cable Stock Profile

We supply a wide range of cable products, please call your local sales office for more details.

PVC Flexible Cables

209-Y Cable
218-Y Flexible Cable
2192Y Flexible Cable
2491X Flexible Cable
309-Y Cable
318-Y Cable
6381Y Cable
Arctic Grade Cable
Curly Flex PVC Cable
Elevator Cable/Platform Cable
Tri-rated Cable

LSZH Flexible Cables

2491B/6701B Flexible Cable
318-B LSZH Cable
6381 LSZH Cable
Cat 5E PE FTP GSWB LSZH Cable
Cat 5E UTP LSZH Cable
Cat 6 LSZH Cable
CY LSZH Control Flexible Cable
H07ZZ-F Cable
RZ1-K Cable
YY LSZH Control Flexible Cable

Profibus and Profinet Cables

Profibus DP Q-Strip Cable
Profibus PA Cable
Profinet Type A Cable

Fixed Wiring Cables

6181Y Double Insulated Surface Wiring Cable
624-B LSZH Twin and Earth
6491B Conduit Wiring Cable
6491X Conduit Wiring Cable
Steel Wire Armoured (SWA) LSZH Cable
Steel Wire Armoured (SWA) PVC Cable

Control Flexible Cables

CY Control Flexible Cable
CY LSZH Control Flexible Cable
SY Control Flexible Cable
YY Control Flexible Cable
YY LSZH Control Flexible Cable

Belden Cables

Belden 8162 Multi-Conductor Low Capacitance
Computer cable
Belden 8778 Analog Multi-Pair Snake Cable
Belden 9844 Multi-Conductor Low Capacitance
Computer Cable

Belden Alternative Cable

Individually Screened Multi-Pair Cable
Individually Screened Multi-Pair Low Cap RS422 Cable
Overall Foil and Braid Screened Cable
Overall Screened Multi-Core Cable
Overall Screened Multi-Pair Cable
Overall Screened Single Pair Cable
Unscreened Single Pair Cable

Data Cables

Cat 5E FTP PVC Cable
Cat 5E GSWB LSZH Cable
Cat 5E UTP LSZH Cable
Cat 5E UTP Patch Leads
Cat 5E UTP PE External Cable
Cat 5E UTP PVC Cable
Cat 5E 25 Pair UTP LSZH Cable
Cat 5E 25 Pair UTP PE Cable
Cat 6 LSZH Cable

Accessories

Cable Accessories
Cable Glands
Cable Lugs
Heatshrink
PVC Sleeving
Neoprene Sleeving
Braided Sleeving
Data Accessories
Patch Panels

**Other Cable options
available on request**

Standard Slot Trunking

Material: Rigid self-extinguishing PVC (UL94 V0)
 Colour: Grey to RAL 7035 Grey
 Temperature rating: -15°C +60°C (+5°F to +140°F)
 Complies with: UL 94 V0 Standard & IEC 695-2-1 (glow wire test)

Insulating, shock-proof, self-extinguishing.
 Resistant to acids, oils and grease.
 Supplied in 2 metre lengths.
 Easy open/close cover design.
 Snap-off ribs leave burr-free edges.

8/12mm Standard Slots

W (mm)	H (mm)	No. of 2m Lengths / Pack	Part No.
25	40	24	05043
40	40	15	05045
60	40	20	05047
80	40	16	05049
100	40	12	05051
25	60	17	05063
40	60	11	05065
60	60	16	05067
80	60	12	05069
100	60	10	05071
120	60	7	05073
25	80	14	05083
40	80	18	05085
60	80	12	05087
80	80	8	05089
100	80	8	05091
120	80	6	05093
25	100	10	05094
40	100	14	05095
60	100	10	05096
80	100	7	05097
100	100	4	05098
150	100	4	05099

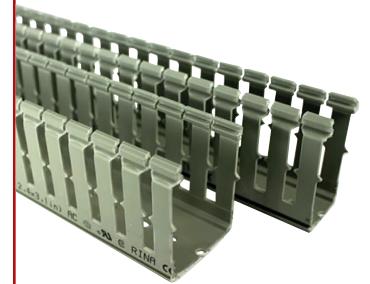
Narrow Slot Trunking

Material: Rigid self-extinguishing PVC (UL94 V0)
 Colour: Grey to RAL 7035 Grey
 Temperature rating: -15°C +60°C (+5°F to +140°F)
 Complies with: UL 94 V0 Standard & IEC 695-2-1 (glow wire test)

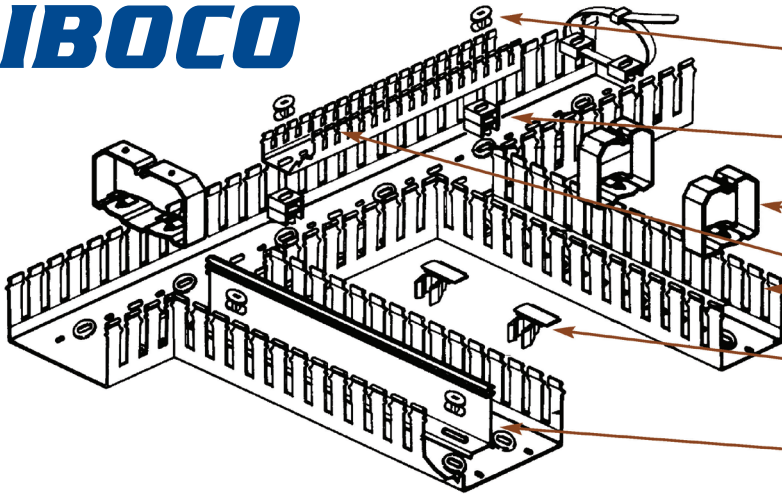
Insulating, shock-proof, self-extinguishing.
 Resistant to acids, oils and grease.
 Supplied in 2 metre lengths.
 Easy open/close cover design.
 Snap-off ribs leave burr-free edges.

4/6mm Standard Slots

W (mm)	H (mm)	No. of 2m Lengths / Pack	Part No.
25	40	24	05143
40	40	15	05145
60	40	20	05147
80	40	16	05149
100	40	12	05151
25	60	17	05163
40	60	11	05165
60	60	16	05167
80	60	12	05169
100	60	10	05171
120	60	7	05173
25	80	14	05183
40	80	18	05185
60	80	12	05187
80	80	8	05189
100	80	8	05191
120	80	6	05193
25	100	10	05194
40	100	14	05195
60	100	10	05196
80	100	7	05197
100	100	4	05198



IBOCO



ZP1 Fixing Inset

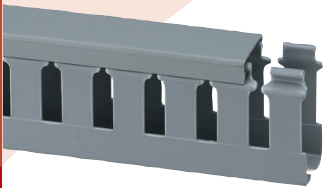
ZP2 Stackable Fixing Inset

CL Cable Retaining Clip

T1 Trunking

DUCKAMARK Identification Tag

SEP-E Separator



Cable Trunking

The IBOCO range of Cable Trunking System is available in 3 different styles with different side slot openings, sizes and colours. The range also includes a complete range of accessories such as cable retention clips, separators, circuit identification system and the ability to direct mount the trunking on DIN rail. The system offers the optimum solution to simplify and accelerate panel building.

Material: Rigid self-extinguishing PVC (UL94 V0)
 Colour: Grey to RAL 7030 or blue to RAL 5015
 Temperature rating: 60° ± 2°C

Supplied in 2 metre lengths complete with cover.

The standard T1 range is ideal for cables usually used in power panels and has a side slot opening of 8mm (generally).

Approvals

- CEI
- CSA
- DIN
- DIN EN
- DIN VDE
- NF
- UL (except Blue T1)
- EN 50 022
- EN 50 035
- EN 50 045
- IEC 1084-1
- CE Marked
- NATO

T1 PVC Grey Trunking

W (mm)	H (mm)	No. of 2m Lengths / Pack	Part No.
15	18	36	T1 M 015 X 18
15	30	32	T1 M 015 X 30
15	40	24	T1 M 015 X 40
25	30	36	T1 025 X 30
25	40	36	T1 025 X 40
40	40	20	T1 040 X 40
60	40	12	T1 060 X 40
80	40	12	T1 080 X 40
100	40	8	T1 100 X 40
25	60	24	T1 025 X 60
40	60	18	T1 040 X 60
60	60	12	T1 060 X 60
80	60	12	T1 080 X 60
100	60	8	T1 100 X 60
120	60	8	T1 120 X 60
25	80	24	T1 025 X 80
40	80	16	T1 040 X 80
60	80	12	T1 060 X 80
80	80	12	T1 080 X 80
100	80	8	T1 100 X 80
120	80	8	T1 120 X 80
25	100	8	T1 025 X 100
40	100	8	T1 040 X 100
60	100	4	T1 060 X 100
80	100	4	T1 080 X 100
100	100	4	T1 100 X 100
150	100	4	T1 150 X 100

Pack quantities of trunking may be split on request, with a surcharge.

T1 PVC Blue Trunking

W (mm)	H (mm)	No. of 2m Lengths / Pack	Part No.
25	30	36	T1 025 X 30B
40	40	18	T1 040 X 40B
60	40	12	T1 060 X 40B
25	60	18	T1 025 X 60B
40	60	18	T1 040 X 60B
60	60	12	T1 060 X 60B
25	80	24	T1 025 X 80B
40	80	16	T1 040 X 80B
60	80	12	T1 060 X 80B
80	80	12	T1 080 X 80B
100	80	8	T1 100 X 80B
100	100	4	T1 100 X 100B



The narrow slot T1E is ideal for small sized cables commonly used in electric and electronic control panels and has a side slot opening of 4mm.

T1E Narrow Slot Trunking

W (mm)	H (mm)	No. of 2m Lengths / Pack	Part No.
25	40	36	T1E 025 X 40
40	40	20	T1E 040 X 40
60	40	12	T1E 060 X 40
80	40	12	T1E 080 X 40
100	40	8	T1E 100 X 40
25	60	24	T1E 025 X 60
40	60	18	T1E 040 X 60
60	60	12	T1E 060 X 60
80	60	12	T1E 080 X 60
100	60	8	T1E 100 X 60
120	60	8	T1E 120 X 60
25	80	24	T1E 025 X 80
40	80	16	T1E 040 X 80
60	80	12	T1E 060 X 80
80	80	12	T1E 080 X 80
100	80	8	T1E 100 X 80
120	80	8	T1E 120 X 80
100	100	4	T1E 100 X 100

The TD range, made in multiples of 12.5mm, offers a range of sizes that are equivalent to imperial dimensions.

TD Trunking

W (mm)	H (mm)	No. of 2m Lengths / Pack	Part No.
25	25	24	TD 025 X 25
37.5	25	32	TD 037.5 X 25
50	37.5	12	TD 050 X 37.5
25	50	24	TD 025 X 50
37.5	50	12	TD 037.5 X 50
50	50	12	TD 050 X 50
75	50	12	TD 075 X 50
100	50	8	TD 100 X 50
37.5	75	12	TD 037.5 X 75
50	75	12	TD 050 X 75
75	75	8	TD 075 X 75
100	75	8	TD 100 X 75

Accessories

Spare Covers

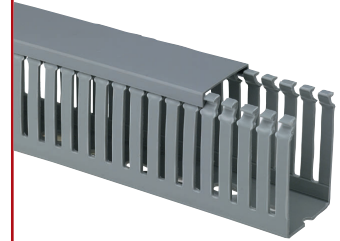
Trunking Width (mm)	No. in Pack	Part No.
15	25	COV 015
25	25	COV 025
40	25	COV 040
50	25	COV 050
60	25	COV 060
75	25	COV 075
80	25	COV 080
100	20	COV 100
120	20	COV 120
150	20	COV 150

For retaining cables during wiring operations where the panel is in a vertical position. They are anchored in the recessed boss in the trunking base with a simple rotating movement.

Cable Retaining Clips

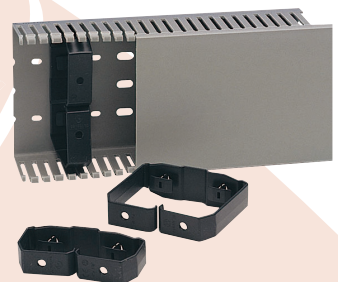
W (mm)	H (mm)	No. of 2m Lengths / Pack	Part No.
40	40	40	CL 040 X 40
40	60	120	CL 040 X 60
40	80	20	CL 040 X 80
60	40	40	CL 060 X 40
60	60	20	CL 060 X 60
60	80	20	CL 060 X 80
60	100	20	CL 060 X 100
80	60	20	CL 080 X 60
80	80	10	CL 080 X 80
80	100	10	CL 080 X 100
100	40	10	CL 100 X 40
100	60	10	CL 100 X 60
100	80	30	CL 100 X 80
100	100	5	CL 100 X 100
120	60	50	CL 120 X 60
120	80	10	CL 120 X 80
150	100	5	CL 150 X 100

IBOCO

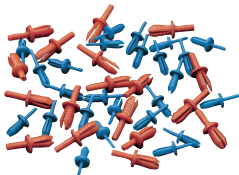
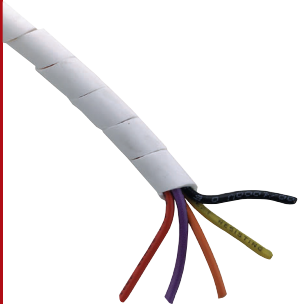
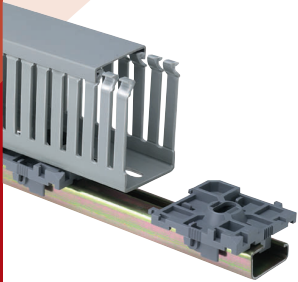
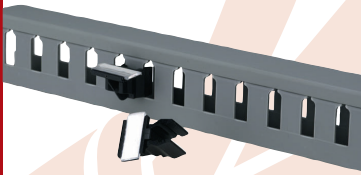


Approvals

CEI
CSA
DIN
DIN EN
DIN VDE
NF
UL (except Blue T1)
EN 50 022
EN 50 035
EN 50 045
IEC 1084-1
CE Marked
NATO



IBOCO



The TR1, TR1-E and TRD wire retainers come in one single size with predetermined breaklines to adapt them to different duct width: 100, 80, 60 and 40 for T1/ T1-E and 100, 75, 50 and 37.5 for TD. With a perfect fitting on duct fingers owing to an anti-rotation tooth, the new unique profile allows for a more rapid mounting.

Wire Retainers

Description	Colour	Pack Qty.	Part No.
Rigid PVC, Self extinguishing	Black	100	TR1
		100	TR1-E

For identification of control gear & switch gear. Ductamark is mounted onto the side wall of T1 trunking.

Ductamarks

Single Tag Dimensions	Pack Qty.	Part No.
15 x 26mm	100	DUCTAMARK 1
33 x 51mm	25	DUCTAMARK 2

Allows the physical separation of circuits with different voltages or functions within the same duct and fixed using ZP inserts.

Separators

For using with trunking width	Pack Qty.	Part No.
40mm	32	SEP E 040
60mm	20	SEP E 060
80mm	12	SEP E 080

Used to fix separator strips or small trunking. Simple snap fit. ZP2 can be stacked to provide different fixing planes and can be used with cable ties for tightening wire bundles inside trunking.

ZP Fixing Inserts

Pack Qty.	Part No.
1000	ZP1
500	ZP2

A convenient method of mounting T1 and T1E trunking on European standard rails using ZP2 fixing inserts.

Dinblok Rail Adaptors

For use with Rail	Pack Qty.	Part No.
TS35	25	DINBLOK3

Maximum temperature 70°C. Flexible grey polypropylene self-extinguishing, non toxic ducting. Supplied in 500mm lengths with adhesive backing.

Dinosauro

W (mm)	H (mm)	Pack Qty.	Part No.
13	15	42	DN AS
20	24	16	DN AM
30	33	12	DN AL

An expanding polythene spiral wrap for fast expanding and economical construction of cable bundles. Easily removed for re-use.

Technical Data

Max. operating temp. 70°C
Type P Halogen free

Spiralite

Type	For Cable Bundles Dia.		Pack Qty.	Part No.
	Min.	Max.		
P - Natural	1.5	12	50	P1
	6	50	25	P2
	9.5	75	25	P3
	12	100	20	P4

Insulating, functional & easy to apply. Good temperature resistance. Extremely short installation time. Material - Polyamide.

Rivets

Colour	Diameter (mm)	Pack Qty.	Part No.
Light BLue	4	100	R4
Orange	6.3	100	R6

Independent sliding metal core for maximum tool stability, enabling greater pressure to be exerted when inserting the rivet into the hole. Soft plastic ergonomic handle. Long 233mm metal body for easy insertion into narrow and deep wiring ducts.

Rivets

Rivet Length (mm)	Pack Qty.	Part No.
4	4	RT4
6	4	RT6

Betaduct Trunking

Material: Rigid self-extinguishing PVC (UL94 V0)
 Colour: Grey to RAL 7030 or blue to RAL 5015
 Temperature rating: -15°C +60°C (+5°F to +140°F)

Supplied in 2 metre lengths complete with cover.
 The open slot range has a side slot opening of 8mm (generally).



Open Slot PVC Grey Trunking

W (mm)	H (mm)	No. of 2m Lengths / Pack	Part No.
25	53	12	10450018
29	41	12	10450022
29	54	12	10450023
29	79	8	10450024
30	105	8	10450025
39	79	8	10450034
41	41	12	10450032
41	54	8	10450033
43	105	8	10450035
54	28	12	10450051
54	41	8	10450052
54	54	8	10450053
55	79	8	10450054
56	105	4	10450055
78	54	8	10450073
80	41	8	10450072
80	80	8	10450074
80	105	4	10450075
107	54	4	10450103
107	80	4	10450104
107	104	4	10450105
107	130	4	10450106
131	78	4	10450124

Pack quantities of trunking may be split on request, with a price surcharge.

- 10mm slot pitch
- 18 sizes available in grey, white or black
- Ideal for use with slimmer terminal blocks where more access is required with a slot opening of 4mm.

Narrow Slot PVC Grey Trunking

W (mm)	H (mm)	No. of 2m Lengths / Pack	Part No.
25	53	12	10470018
29	41	12	10470022
29	54	12	10470023
29	79	8	10470024
30	105	8	10470025
41	41	12	10470032
41	54	8	10470033
41	79	8	10470034
43	105	8	10470035
54	54	8	10470053
55	79	8	10470054
56	41	8	10470052
56	105	4	10470055
78	54	8	10470073
80	80	8	10470074
80	40	8	10470072
80	105	4	10470075
107	54	4	10470103
107	80	4	10470104
107	104	4	10470105



Beta-Nylofix

ECT conduit

Material: Specially modified polyamide (PA 6)
 Colour: Dark grey or black
 Temperature rating: -40°C +105°C (150°C short term)

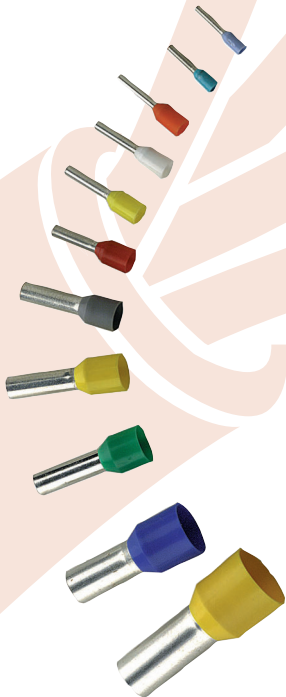
Medium-wall and flexible corrugated conduit for insulating and mechanical protection of cables in the electrical installation of machinery and industrial equipment in accordance with standard EN 60204-1 (Safety of Machinery).



Narrow Slot PVC Grey Trunking

Diameter (mm)			Min. Bending Radius R (static)	Length (M) Per Pack	Part No.
Nominal	Ø Int.	Ø Ext.			
12	12.2	15.8	30	50	ECT-12G
17	16.8	21.2	40	50	ECT-17G
23	22.6	28.5	55	50	ECT-23G

We can supply this conduit with a longitudinal cut for pre-cabing.



Insulated Ferrules

Insulated - German Colour Code

Cable Size (mm ²)	Strip Length (mm)	Colour	Pack Qty.	Part No.
0.25	8	Lt. Blue	5x 100	9026050000
0.25	10	Lt. Blue	500	9025760000
0.34	8	Turquoise	5x 100	9026030000
0.5	10	Orange	500	9004560000
0.5	10	Orange	5x 100	9026060000
0.75	11	White	500	9025960000
0.75	11	White	5x 100	9025700000
0.75	14	White	500	9025910000
1.0	11	Yellow	500	9025970000
1.0	11	Yellow	5x 100	9025710000
1.5	11	Red	500	9025980000
1.5	11	Red	5x 100	9025720000
1.5	21	Red	500	0565600000
2.5	11	Blue	500	9019160000
2.5	11	Blue	5x 100	9026100000
2.5	21	Blue	500	9019180000
4.0	12	Grey	500	9019190000
4.0	15	Grey	500	9019200000
4.0	20	Grey	100	9019210000
6.0	15	Black	100	0533500000
6.0	20	Black	100	0565700000
10.0	16	Ivory	100	0534200000
10.0	22	Ivory	100	0565800000
16.0	16	Green	100	0565900000
16.0	22	Green	100	0566000000
25.0	21	Brown	50	0317000000
25.0	26	Brown	50	0317100000
35.0	21	Beige	50	0317200000
35.0	29	Beige	50	0317300000
50.0	26	Olive	50	0444200000

Insulated - French Colour Code

Cable Size (mm ²)	Strip Length (mm)	Colour	Pack Qty.	Part No.
0.5	10	White	500	9004590000
0.75	11	Lt. Blue	500	9018550000
1.0	11	Red	500	9018560000
1.5	11	Black	500	9025240000
2.5	11	Grey	500	9021070000
4.0	12	Orange	500	9021100000
6.0	15	Green	100	9021130000
10.0	16	Brown	100	9021150000
16.0	16	White	100	9021170000
25.0	21	Black	50	9021190000

Insulated Twin Conductor - German Colour Code

Cable Size (mm ²)	Strip Length (mm)	Colour	Pack Qty.	Part No.
2 x 0.5	11	Orange	5x 100	9004440000
2 x 0.75	11	White	5x 100	9018510000
2 x 1.0	12	Yellow	5x 100	9018650000
2 x 1.5	12	Red	5x 100	9004410000
2 x 2.5	13	Blue	5x 50	9004430000

Insulated Twin Conductor - French Colour Code

Cable Size (mm ²)	Strip Length (mm)	Colour	Pack Qty.	Part No.
2 x 0.5	11	White	5x 100	9004780000
2 x 0.75	11	Lt. Blue	5x 100	9018570000
2 x 1.0	12	Red	5x 100	9018540000
2 x 1.5	12	Black	5x 100	9004420000
2 x 2.5	13	Grey	5x 100	9018580000

Cable Crimps

Red

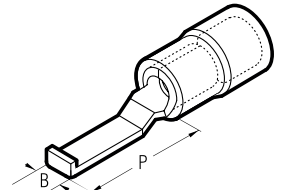
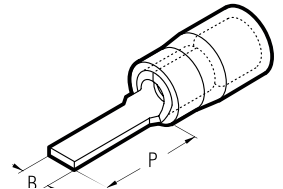
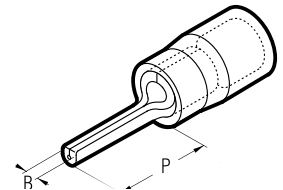
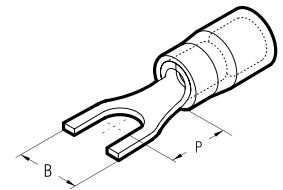
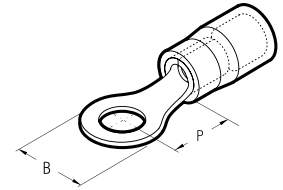
Cable Size (mm ²)	Type	Style	Dimensions (mm)			Pack Qty.	Part No.
			Stud Size	B	P		
3.9 - 6.7	Ring	Insulated	3	5.6	4.5	1000	RF-M 3
			3.5	5.6	4.5	1000	RF-M 3.5
			4	7.0	6.5	1000	RF-M 4
			5	7.8	7.1	1000	RF-M 5
			6	9.4	8.1	1000	RF-M 6
	Spade	Insulated	3	5.5	5.5	1000	RF-U 3
			3.5	6.0	6.5	1000	RF-U 3.5
			4	6.5	7.5	1000	RF-U 4
			5	8.5	7.5	1000	RF-U 5
			6	9.4	8.1	1000	RF-U 6
Pins	Insulated	1.8	10.0		1000	RF-P 10	
		1.8	12.0		1000	RF-P 12	
Blades	Insulated	3.0	12.8		1000	RF-PP 12	
		3.0	14.8		1000	RF-PP 14	
Hooked blade	Insulated	3.0	17.5		1000	RF-PPL 30	
			4.6	17.5		1000	RF-PP 46

Blue

Cable Size (mm ²)	Type	Style	Dimensions (mm)			Pack Qty.	Part No.
			Stud Size	B	F		
3.9 - 6.7	Ring	Insulated	3	5.6	4.5	1000	BF-M 3
			3.5	5.6	4.5	1000	BF-M 3.5
			4	7.0	6.5	1000	BF-M 4
			5	7.8	7.1	1000	BF-M 5
			6	9.4	8.1	1000	BF-M 6
	Spade	Insulated	3	5.5	5.5	1000	BF-U 3
			3.5	6.0	6.5	1000	BF-U 3.5
			4	6.5	7.5	1000	BF-U 4
			5	8.5	7.5	1000	BF-U 5
			6	9.4	8.1	1000	BF-U 6
Pins	Insulated	1.8	10.0		1000	BF-P 10	
		1.8	12.0		1000	BF-P 12	
Blades	Insulated	3.0	12.8		1000	BF-PP 12	
		3.0	14.8		1000	BF-PP 14	
Hooked blade	Insulated	3.0	17.5		1000	BF-PPL 30	
			4.6	17.5		1000	BF-PP 46

Yellow

Cable Size (mm ²)	Type	Style	Dimensions (mm)			Pack Qty.	Part No.		
			Stud Size	B	F				
3.9 - 6.7	Ring	Insulated	4	7.0	6.5	1000	GF-M 4		
			5	7.8	7.1	1000	GF-M 5		
			6	9.4	8.1	1000	GF-M 6		
			8	12.0	10.3	1000	GF-M 8		
			10	15.5	13.0	1000	GF-M 10		
			12	19.0	15.1	1000	GF-M 12		
3.9 - 6.7	Spade	Insulated	3.5	6.0	6.5	1000	GF-U 3.5		
			4	6.5	7.5	1000	GF-U 4		
			5	8.5	7.5	1000	GF-U 5		
			6	9.4	8.1	1000	GF-U 6		
			Pins	Insulated	1.8	10.0		1000	GF-P 10
					1.8	12.0		1000	GF-P 12
Blades	Insulated	3.0	12.8		1000	GF-PP 12			
		3.0	14.8		1000	GF-PP 14			
Hooked blade	Insulated	3.0	17.5		1000	GF-PPL 30			
			4.6	17.5		1000	GF-PP 46		



DAVICO
keeping electricity firmly in its place



Cable Crimps

Ring Terminals

Size (mm)	Type	Pack Qty.	Yellow Part No.	Blue Part No.	Red Part No.
3		1000	EYR3	EBR3	ERR3
3.7		1000		EBR37	ERR37
4		1000	EYR4	EBR4	ERR4
5		1000	EYR5	EBR5	ERR5
6		1000	EYR6	EBR6	ERR6
8		1000	EYR8	EBR8	ERR8
10		1000	EYR10	EBR10	ERR10
12		1000	EYR12		

Blade Terminals

10		1000	EYBL10	EBBL10	ERBL10
18		1000		EBBL18	ERBL18

Push On Terminals

2.8x0.5	Female	1000		EBP028F5	ERP028F5
2.8x0.8	Female	1000		EBP028F8	ERP028F8
4.8x0.5	Female	1000		EBP048F5	ERP048F5
4.8x0.8	Female	1000		EBP048F8	ERP048F8
6.3x0.8	Female	1000	EYPO63F	EBPO63F	ERPO63F
	Male	1000	EYPO63M	EBPO63M	ERPO63M
	Piggy back	1000	EYPOA63	EBPOA63	ERPOA63

Fully Insulated Push On Terminals

4.8x0.5	Female	1000		EBFP048F5	ERFP048F5
4.8x0.8	Female	1000		EBFP048F8	ERFP048F8
6.3x0.8	Female	1000	EYFP063F	EBFP063F	ERFP063F
9.5x1.1	Female	1000	EYFP095F		

Bullet Terminals

4	Female	1000		EBAB4F	ERAB4F
	Male	1000		EBAB4M	ERAB4M
5	Female	1000	EYAB5F	EBAB5F	
	Male	1000	EYAB5M	EBAB5M	

Pin Terminals

12		1000		EBP12	ERP12
14		1000	EYP14		

Spade Terminals

3.2		1000			ERF3
3.5		1000	EYF3N	EBF3N	ERF3N
4		1000	EYF4N	EBF4N	ERF4N
5		1000	EYF5	EBF5	ERF5
6		1000	EYF6	EBF6	ERF6

Butt Terminals

		1000	EYB	EBB	ERB
--	--	------	-----	-----	-----

Auto Bullet Connectors

Single female	1000			DVSC1
Double female	1000			DVSC2
Brass	1000			DAB

Cable Glands

Compression Glands

Type		Pack Qty.	Black Part No.	White Part No.
M12	Compression	2	NGM12BL	NGM12W
M16	Compression	2	NGM16BL	NGM16W
M20	Compression	2	NGM20BL	NGM20W
M20	Long thread	2	NGM20LTBL	NGM20LTW
M25	Compression	2	NGM25BL	NGM25W
M25	Long thread	2	NGM25LTBL	NGM25LTW
M32	Compression	2	NGM32BL	NGM32W
M40	Compression	2	NGM40BL	NGM40W
M50	Compression	2	NGM50BL	NGM50W
M63	Compression	2	NGM63BL	NGM63W

SWA Glands - LSF (Low Smoke & Fume)

Type	Pack Qty.	Indoor Part No.	Outdoor Part No.
M20S	2	DAVBW20SKIT	DAVCW20SKIT
M20	2	DAVBW20KIT	DAVCW20KIT
M25	2	DAVBW25KIT	DAVCW25KIT
M32	2	DAVBW32KIT	DAVCW32KIT
M40	2	DAVBW40KIT	DAVCW40KIT
M50	2	DAVBW50KIT	DAVCW50KIT
M63	2	DAVBW63KIT	DAVCW63KIT
M75	2	DAVBW75KIT	DAVCW75KIT

Crimp Terminals



Ring											
Stud Size (mm)	Pack Qty.	Cable size (mm ²)	Part No.	Conductor size (mm)	Part No.	Conductor size (mm)	Part No.				
3.2	100	0.5-1.5	RR32	1.5-2.5	BR32	4.0-6.0					
3.7			RR37		BR37						
4.3			RR43		BR43		YR43				
5.3			RR53		BR53		YR53				
6.4			RR64		BR64		YR64				
8.4			RR84		BR84		YR84				
10.5			RR105		BR105		YR105				
12					BR120		YR120				
Spade (Fork)											
3.2 Narrow			100		0.5-1.5		RS32N	1.5-2.5	BS32N	4.0-6.0	
3.7	RS37	BS37		YS37							
3.7 Narrow	RS37N	BS37N									
4.3	RS43	BS43		YS43							
5.3	RS53	BS53		YS53							
6.4	RS64	BS64		YS64							
8.4				YS84							
Butt											
4	100	0.5-1.5		RBC4		1.5-2.5			4.0-6.0		
4.5							BBC45				
6.8					YBC68						
Male Bullet											
4	100	0.5-1.5	RMB40/VR	1.5-2.5		4.0-6.0					
5					BMB50/VR		YMB50/VR				
Female Bullet											
4	100	0.5-1.5	RFB40/VR	1.5-2.5		4.0-6.0					
5					BFB50/VR		YFB50/VR				
Pin											
10	100	0.5-1.5	RP10	1.5-2.5	BP10	4.0-6.0					
14							YP14				
Blade											
9	100	0.5-1.5		1.5-2.5	BB9	4.0-6.0					
10							YB10				
11			RB11								
14			RB14								
18			RB18		BB18		YB18				
Male Tab											
4.8 x 0.8	100	0.5-1.5	RM50/VR	1.5-2.5	BM50/VR	4.0-6.0					
6.3 x 0.8					RM63/VR		BM63/VR	YM63/VR			
Pre-Insulated Female Push On											
2.8 x 0.5	100	0.5-1.5	RF32/05/VR	1.5-2.5		4.0-6.0					
2.8 x 0.8			RF32/08/VR								
4.8 x 0.5			RF50/05/VR		BF50/05/VR						
4.8 x 0.8			RF50/08/VR		BF50/08/VR						
6.3 x 0.8			RF66/08/VR		BF66/08/VR		YF66/08/VR				
8.0 x 0.8					BF80/08/VR						
9.5 x 0.8							BF100/08/VR				
Fully Insulated Female Push On											
2.8 x 0.8			100		0.5-1.5		RF32/FI/VR	1.5-2.5		4.0-6.0	
4.8 x 0.8							RF50/FI/VR		BF50/FI/VR		
6.3 x 0.8	RF66/FI/VR	BF66/FI/VR		YF66/FI/VR							





Cable End Ferrules

Single Entry

Conductor Size (mm ²)	Barrel Length (mm)	Pack Qty.	French Colour Codes		German Colour Codes	
			Colour	Part No.	Colour	Part No.
0.25	6	1000	Violet	CEF025F	Light Blue	CEF025G
0.34		1000	Pink	CEF034F	Turquoise	CEF034G
0.5		500	White	CEF508F	Orange	CEF508G
0.75		500	Blue	CEF7508F	White	CEF7508G
1.0	8	500	Red	CEF108F	Yellow	CEF108G
1.5		500	Black	CEF1508F	Red	CEF1508G
2.5		500	Grey	CEF2508F	Blue	CEF2508G
4	9	500	Orange	CEF409F	Grey	CEF409G
6		500	Green	CEF612F	Black	CEF612G
10		100	Brown	CEF1012F	Ivory	CEF1012G
16	12	100	Ivory	CEF25016F	Green	CEF25016G
25		100	Black	CEF25016F	Brown	CEF25016G
35		100	Red	CEF35016F	Beige	CEF35016G

Twin Entry

Conductor Size (mm ²)	Barrel Length (mm)	Pack Qty.	French Colour Codes		German Colour Codes	
			Colour	Part No.	Colour	Part No.
0.5		1000	White	TCEF508F	Orange	TCEF508G
0.75		1000	Blue	TCEF7508D	White	TCEF7508G
1.0	8	1000	Red	TCEF108F	Yellow	TCEF108G
1.5		1000	Black	TCEF1508F	Red	TCEF1508G
2.5	10	1000	Grey	2X2.5BLF	Blue	TCEF2510G
4	12	100	Orange	2X4.0BLF	Grey	TCEF412G
6		100	Yellow	TCEF614F	Black	TCEF614G
10	14	100	Red	TCEF1014F	Ivory	TCEF1014G
16		100	Blue	TCEF1614F	Green	TCEF1614G

Un-Insulated Copper Tube Terminals

Copper Tube Terminals

Cable Entry Size (mm ²)	Stud Size (mm)	Pack Qty.	Part No.
2.5	4	100	COL 2.5-4
	5		COL 2.5-5
	6		COL 2.5-6
4	5	100	COL 4-5
	6		COL 4-6
	8		COL 4-8
6	5	100	COL 6-5
	6		COL 6-6
	8		COL 6-8
10	10	100	COL 6-10
	6		COL 10-6
	8		COL 10-8
16	10	100	COL 10-10
	8		COL 16-8
	10		COL 16-10
25	12	100	COL 16-12
	8		COL 25-8
	10		COL 25-10
35	12	50	COL 25-12
	10		COL 35-10
	12		COL 35-12
70	16	30	COL 35-16
	10		COL 70-10
	12		COL 70-12
95	16	30	COL 70-16
	10		COL 95-10
	12		COL 95-12
120	16	20	COL 95-16
	12		COL 120-12
	14		COL 120-14
150	16	10	COL 120-16
	20		COL 120-20
	12		COL 150-12
150	14	10	COL 150-14
	16		COL 150-16
	20		COL 150-20

Heat Shrink Tubing

2:1 Ratio in Mini Boxes

As Supplied (Before Recovery) Inside Diameter	After Recovery Inside Diameter	Packaging	Part No.
1.2mm	0.6mm	20m Mini-Box	HSMB 12
1.6mm	0.8mm	17m Mini-Box	HSMB 16
2.4mm	1.2mm	15m Mini-Box	HSMB 24
3.2mm	1.6mm		HSMB 32
4.8mm	2.4mm		HSMB 48
6.4mm	3.2mm	12m Mini-Box	HSMB 64
9.5mm	4.7mm		HSMB 95
12.7mm	6.4mm	8m Mini-Box	HSMB 127
19.1mm	9.5mm	5m Mini-Box	HSMB 191
25.4mm	12.7mm		HSMB 254

The products listed are available in the following colours:

Black, Clear, Red, Yellow, Blue, White, Green, Brown, Grey and Earth (Green/Yellow). Please specify when ordering.



Braided Sheathing

Specification:

A high quality braided cable sheathing, manufactured in polyester, self extinguishing to UL94 VW1.

Operating temperature -75°C to +150°C.

Wall thickness 0.6mm +/- 0.1mm.

Supaflex Braided Cable Sheathing

Nominal Diameter (mm)	Size Range (mm)		Part No. 10m	Part No. 100m*
	Minimum	Maximum		
4	3	7	SUP4 Black	SUP4 Black
			SUP4 Grey	SUP4 Grey
6	5	10	SUP6 Black	SUP6 Black
			SUP6 Grey	SUP6 Grey
8	6	14	SUP8 Black	SUP8 Black
			SUP8 Grey	SUP8 Grey
10	8	16	SUP10 Black	SUP10 Black
			SUP10 Grey	SUP10 Grey
12	10	18	SUP12 Black	SUP12 Black
			SUP12 Grey	SUP12 Grey
15	12	22	SUP15 Black	SUP15 Black
			SUP15 Grey	SUP15 Grey
20	15	27	SUP20 Black	SUP20 Black
			SUP20 Grey	SUP20 Grey
25	20	35	SUP25 Black	SUP25 Black
			SUP25 Grey	SUP25 Grey
30	25	45	SUP30 Black	SUP30 Black
			SUP30 Grey	SUP30 Grey
40	35	60	SUP40 Black	SUP40 Black*
			SUP40 Grey	SUP40 Grey*
50	45	73	SUP50 Black	SUP50 Black*
			SUP50 Grey	SUP50 Grey*

*Supplied as 2 x 50m rolls



Partool Hand Tools

Ratchet Crimping Tools

Description	Part No.
Red, blue & yellow pre-insulated terminals	CT 15
Un-insulated terminals 1.0 -6mm ² (For Barrel Type)	UCT 15
1.5 to 16mm ² copper tube terminals	CT 1.5-16
10 & 16mm ² copper tube terminals	CT 10-16
6 to 25mm ² copper tube terminals	CT 6-25
Red & blue insulated flag terminals	CT FLAG
MC3 & MC4 male & female standard solar connectors	CT-MC4
Single Cord End Ferrules 0.14- 2.5mm ²	CEFT 01
Single Cord End Ferrules 0.5-6mm ²	CEFT 2
Single Cord End Ferrules 4-16mm ²	CEFT 1
Single Cord End Ferrules 16-35mm ²	CEFT 3
Twin Cord End Ferrules 0.5-6mm ²	TCEFT1
Equilateral Cord End Ferrule Tool - Self-Adjusting up to 6mm ²	EQCEFT



Hand Tools

Cutting Tool

Copper (mm ²)			Aluminium Stranded	Maximum Dia. (mm)	Tool Part No.
Solid	Stranded	Flexible			
16	25	35	16	-	9002660000
-	300	400	400	45	9202040000
-	500	500	500	55	9202060000

Stripping Tool

Range	Tool Part No.	Spare Blade Part No.
0.08 to 1mm ² / AWG 28-18	9001280000	9001290000
0.08 to 6mm ² / AWG 28-10	9005000000	9005400000
4.5 to 25mm ² Ø	9001540000	9001530000

Stripping / Crimping Tool

Tool - Range	Tool Part No.
0.5 to 2.5mm ² / AWG 20 - 14	9020000000

Ferrules in strips of 50 for use with above tool.

Ferrule Strips

Cable Size (mm ²)	Colour Code (German/French)	Pack Qty.	Part No.
0.5	Orange (G)	10 x 50	9004270000
0.5	White (F)	10 x 50	9004280000
0.75	White (G)	10 x 50	9004290000
0.75	Blue (F)	10 x 50	9004310000
1.0	Yellow (G)	10 x 50	9004320000
1.0	Red (F)	10 x 50	9004330000
1.5	Red (G)	50 x 10	9004340000
1.5	Black (F)	50 x 10	9004350000
2.5	Blue (G)	50 x 10	9004360000
2.5	Grey (F)	50 x 10	9004370000

Crimping Tool for Bootlace Ferrules

Range	Tool Part No.
0.14 to 1.5mm ² / AWG 26 - 16	9005990000
0.5 to 4mm ² / AWG 20 - 12	9012500000
6.0 to 16mm ² / AWG 10 - 6	9014980000
25 to 50mm ² / AWG 3 - 1	9006450000

Screwdrivers

Type	Dimensions (mm)			Tool Part No.
	A	B	C	
SD (uninsulated)	0.6	3.5	100	9008330000
	1.0	5.5	150	9008350000
	0.4	2.5	75	9008370000
	0.5	3.0	100	9008380000
SDI (uninsulated)	0.6	3.5	100	9008390000
	0.8	4.0	100	9008400000
	1.0	5.5	125	9008410000
	1.2	6.5	150	9008420000
	1.6	8.0	200	9008430000
SDIK (Insulated for Philips head screws)			80	9008570000
			100	9008580000

Cable Ties

Manufactured from halogen free polyamide 6.6 nylon
UL 94 Flammability Class V2

UL 1565 approval
Temperature range: -40°C to +100°C

Cable Ties				
L (mm)	W (mm)	Pack Qty.	Natural Part No.	Black Part No.
100	2.5	1000	HFC100N	HFC100B
140	3.6	1000	HFC140N	HFC140B
200	2.5	1000	HFC200LN	HFC200LB
300	4.8	1000	HFC300N	HFC300B
370	4.8	1000	HFC370N	HFC370B
370	7.6	100	HFC370HN	HFC370HB

Mounting Bases			
Size (mm)	Description	Pack Qty.	Part No.
20x20	Natural	100	HFC1/4N
20x20	Black	100	HFC1/4B
28x28	Natural	100	HFC2/4N
28x28	Black	100	HFC2/4B

Cable Markers

Closed marker sleeves for marking uninstalled cables.
Unique profile with spring action bellows covers a wide diameter range;
Designed to interlock when installed to enable easy alignment of multi character markings - Chevron Cut.

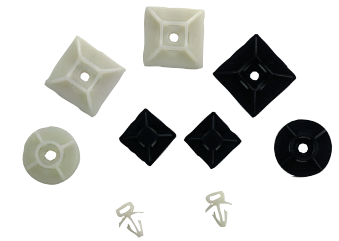
Technical Data

Material: Cadmium free rigid PVC
Self extinguishing with good resistance to chemicals,
UV & gamma radiation
Temp.range: -30°C to +70°C

Partex PA Series Selection Chart				
Cable Section (mm ²)	Cable Diam. (mm)	Reel Quantity	Strip Pack Quantity	Part No.
0.2 - 0.7	1.0 - 2.0	1000	1000 (5 x 200)	PY01/3
0.5 - 0.75	1.7 - 2.8	1000	1000 (5 x 200)	PA02/3
0.75 - 4.0	2.5 - 5.0	1000	1000 (5 x 200)	PA1/3
2.5 - 16	4.0 - 10.0	250 disc	500 (5 x 100)	PA2/4
16 - 70	8.0 - 16.0		100 (5 x 20)	PA3/6

Partex PA Series Cable Markers				
Marker Type	Colour	Pack or Reel	Pack Qty.	Part No.
PY01/3	Black on white	Reel	1000	PY01/3B/W/ <input type="checkbox"/> -RL
		Pack	1000	PY01/3B/W/ <input type="checkbox"/> -PK
	Black on yellow	Reel	1000	PY01/3B/Y/ <input type="checkbox"/> -RL
		Pack	1000	PY01/3B/Y/ <input type="checkbox"/> -PK
	Colour coded	Reel	1000	PY01/3C/C/ <input type="checkbox"/> -RL
		Pack	1000	PY01/3C/C/ <input type="checkbox"/> -PK
PA02/3	Black on white	Reel	1000	PA02/3B/W/ <input type="checkbox"/> -RL
		Pack	1000	PA02/3B/W/ <input type="checkbox"/> -PK
	Black on yellow	Reel	1000	PA02/3B/Y/ <input type="checkbox"/> -RL
		Pack	1000	PA02/3B/Y/ <input type="checkbox"/> -PK
	Colour coded	Reel	1000	PA02/3C/C/ <input type="checkbox"/> -RL
		Pack	1000	PA02/3C/C/ <input type="checkbox"/> -PK
PA1/3	Black on white	Reel	1000	PA1/3B/W/ <input type="checkbox"/> -RL
		Pack	1000	PA1/3B/W/ <input type="checkbox"/> -PK
	Black on yellow	Reel	1000	PA1/3B/Y/ <input type="checkbox"/> -RL
		Pack	1000	PA1/3B/Y/ <input type="checkbox"/> -PK
	Colour coded	Reel	1000	PA1/3C/C/ <input type="checkbox"/> -RL
		Pack	1000	PA1/3C/C/ <input type="checkbox"/> -PK
PA2/4	Black on white	Reel	250	PA2/4B/W/ <input type="checkbox"/> -RL
		Pack	500	PA2/4B/W/ <input type="checkbox"/> -PK
	Black on yellow	Reel	250	PA2/4B/Y/ <input type="checkbox"/> -RL
		Pack	500	PA2/4B/Y/ <input type="checkbox"/> -PK
	Colour coded	Reel	250	PA2/4C/C/ <input type="checkbox"/> -RL
		Pack	500	PA2/4C/C/ <input type="checkbox"/> -PK
PA3/6	Black on white	Pack	100	PA3/6B/W/ <input type="checkbox"/> -PK
	Black on yellow	Pack	100	PA3/6B/Y/ <input type="checkbox"/> -PK
	Colour coded	Pack	100	PA3/6C/C/ <input type="checkbox"/> -PK

Accessories		
Description	Part No.	
Teflon applicators	For PY01 0.5mm cable	PUJ1T
	For PA02 0.5mm cable	PUJ3T
	For PA02/PA1 0.75-1.5mm cable	PUJ4T
	For PA1 2.5-4mm cable	PUJ5T

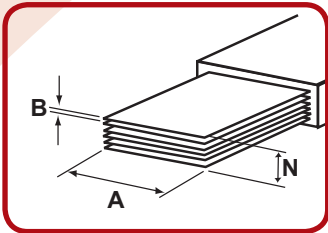
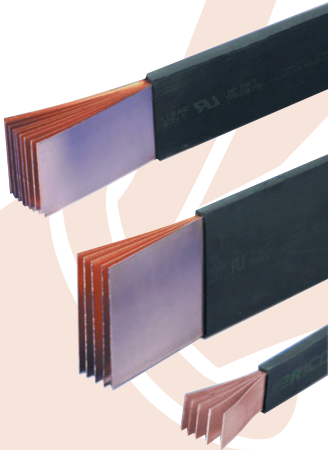


Part No. Completion

When ordering complete the Part No. by adding the following:-

Legend

A, B, C...0, 1, 2, 3 ect



Flexibar - The Flexible Busbar

The current ratings shown below give a 50°C rise above ambient temperature.

Flexibar							
Current	Dimensions (mm)			ΔT (K)	Section (mm ²)	No. Length Per Pack	Part No.
	N	A	B				
125A	8	6	0.5	166	24	10	552400
	3	9	0.8	134	21.6	10	552410
	6	9	0.8	245	43.2	10	552420
	3	13	0.5	167	19.5	10	552440
	2	15.5	0.8	212	24.8	10	552390
	9	9	0.8	265	64.8	10	552430
250A	6	13	0.5	253	39	10	552450
	4	15.5	0.8	320	49.6	10	552460
	2	20	1	275	40	5	552490
	3	20	1	360	60	5	552500
	2	24	1	380	48	5	552550
	6	15.5	0.8	402	74.4	10	552470
400A	10	15.5	0.8	455	124	10	552480
	4	20	1	402	80	5	552510
	5	20	1	420	100	5	552520
	6	20	1	462	120	5	552530
	3	24	1	413	72	5	552560
	4	24	1	465	96	5	552570
	2	32	1	406	64	5	552620
	3	32	1	480	96	5	552630
	2	40	1	455	80	5	552690
	5	24	1	514	120	5	552580
	6	24	1	566	144	5	552590
	500A	4	32	1	548	128	5
3		40	1	522	120	5	552700
4		40	1	615	160	5	552710
3		50	1	590	150	5	552760
10		20	1	645	200	5	552540
8		24	1	678	192	5	552600
630A	5	32	1	640	160	5	552650
	6	32	1	715	192	5	552660
	5	40	1	760	200	5	552720
	4	50	1	727	200	5	552770
	10	24	1	800	240	5	552610
	8	32	1	860	256	5	552670
800A	6	40	1	860	240	5	552730
	5	50	1	930	250	5	552780
	4	63	1	855	252	2	552830
	3	80	1	827	240	2	552880
	10	32	1	1040	320	5	552680
	8	40	1	1040	320	5	552740
1000A	10	40	1	1181	400	5	552750
	6	50	1	1035	300	2	552790
	8	50	1	1175	400	2	552800
	5	63	1	1030	315	2	552840
	6	63	1	1215	378	2	552850
	4	80	1	1015	320	2	552890
1250A	5	80	1	1175	400	2	552900
	10	50	1	1395	500	2	552810
	8	63	1	1395	504	2	552860
	6	80	1	1375	480	2	552910
	5	100	1	1385	500	2	552950
	6	100	1	1550	600	2	552960
1600A	10	63	1	1600	630	2	552870
	8	80	1	1600	640	2	552920
	10	80	1	1775	800	2	552930
	8	100	1	1815	800	2	552970
	10	100	1	1985	100	2	552980
	12	100	1	2115	1200	2	552990
	10	120	1	2330	1200	2	538650

Flexibar is supplied in 2m lengths. The Lengths per pack are given for convenience, common sizes are available per 2m length.

Insulated Braided Shunt (IBS)

- The best alternative to cable!
- No cutting, no stripping, no crimping
- More flexible connection
- Pre-punched: ready to use
- Quick and easy to install
- Max. working temperature: 105°C
- IEC 60439.1 & IEC 61439.1
- LSHF flame retardant

IBSADV 25

Current	S (mm ²)	L1 (mm)	L2 (mm)	J (mm)	K (mm)	M (mm)	Ø1 (mm)	Ø2 (mm)	No. Per Pack	Length	Weight (Kg)	Part No.
160A	IBSADV25-230-8-10	252	230								0.095	534500
	IBSADV25-330-8-10	352	330								0.14	534501
	IBSADV25-430-8-10	452	430	20	6	1.9	8.5	10.5	10		0.17	534502
	IBSADV25-530-8-10	552	530								0.21	534503
	IBSADV25-630-8-10	652	630								0.25	534504

IBSADV 50

250A	IBSADV50-230-10	255	230								0.16	534507
	IBSADV50-330-10	355	330								0.22	534508
	IBSADV50-430-10	455	430	20	7.5	3.8	10.5	10.5	10		0.29	534509
	IBSADV50-530-10	555	530								0.35	534510
	IBSADV50-630-10	655	630								0.41	534511

IBSADV 120

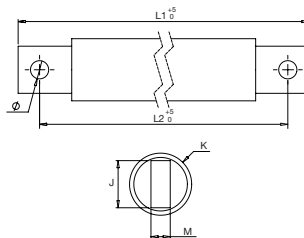
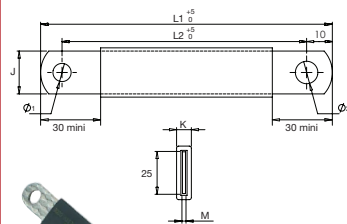
Current	S (mm ²)	L1 (mm)	L2 (mm)	J (mm)	K (mm)	M (mm)	Ø (mm)	No. Per Pack	Length	Weight (Kg)	Part No.	
400A	IBSADV120-330-10	354	330								0.51	534514
	IBSADV120-430-10	454	430								0.67	534515
	IBSADV120-530-10	554	530	24	27	10	10.5	2			0.82	534516
	IBSADV120-630-10	654	630								0.98	534517
	IBSADV120-830-10	854	830								1.29	534518

IBSADV 185

500A	IBSADV185-330-10	354	330								0.82	534520
	IBSADV185-430-10	454	430								1.07	534521
	IBSADV185-530-10	554	530	24	31	15	10.5	2			1.26	534522
	IBSADV185-630-10	654	630								1.48	534523
	IBSADV185-830-10	854	830								1.90	534524

IBSADV 240

630A	IBSADV240-330-10	356	330								1.03	534526
	IBSADV240-430-10	456	430								1.34	534527
	IBSADV240-530-10	556	530	32	36	15	12.5	2			1.65	534528
	IBSADV240-630-10	656	630								1.96	534529
	IBSADV240-830-10	856	830								2.58	534530



Earth Braids with Integral Palms

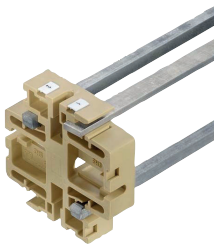
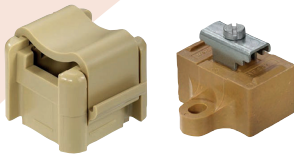
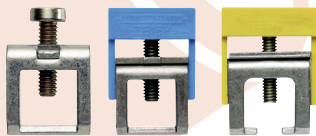
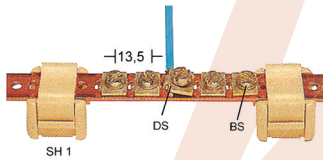
Braids with solidified palms where the contact areas are treated with solder before cutting and punching. These can be used for very short power connections between equipment up to 500A or for all earthing and bonding applications. Excellent resistance to vibration and fatigue with rounded ends to give a good appearance.

Working temperature: Up to 105°C
UL E22029

MBJ Series Earth Braids

Current Amps	Size (mm) L X W	Section (mm ²)	Hole Diameter (mm)	Part No.
40	150 x 13	6	6.5	556600
75	200 x 12	10	6.5	556930
	150 x 15	16	8.5	556630
120	200 x 15	16	8.5	556640
	250 x 15	16	8.5	556650
	300 x 15	16	8.5	556660
	500 x 15	16	8.5	556940
	150 x 23	25	10.5	556680
150	200 x 23	25	10.5	556690
	300 x 23	25	10.5	556710
	500 x 23	25	10.5	556950
	150 x 23	35	10.5	556780
197	200 x 23	35	10.5	556790
	300 x 23	35	10.5	556810
	500 x 23	35	10.5	556970
250	150 x 28	50	10.5	556830
	200 x 28	50	10.5	556840
	300 x 28	50	10.5	556860
	500 x 28	50	10.5	556980
290	300 x 28	70	10.5	563460
	500 x 28	70	10.5	563490
349	500 x 50	100	16.5	563500
	500 x 50	100	16.5	563520





Busbar Systems

In panels and switchgear it may be necessary to unite the N and protective leads to a central point. For this busbars are available to which numerous conductors can be attached without taking up too much space.

Pre-Drilled Busbar

Busbar Type (length 1m)	Size (mm)	Current	Part No.
Steel	12 x 2	45A	0280300000
Copper	15 x 2	80A	0280200000

Accessories for Pre-Drilled Busbar

Type	Description	Type	Part No.
DS	Clamp	Copper / Steel	0280100000
BS	Screw	Copper / Steel	0296700000
SH1	Support block	Copper / Steel	0299860000

Busbars

Busbar Type (length 1m)	Size (mm)	Current	Part No.
Copper	10 x 3	140A	0348900000
Copper	15 x 6	265A	0357400000

Clamping Yokes

Type	Size (mm)	Busbar Size	Part No.
Without Cover			
ZB4	0.5...4mm	10 x 3	0316500000
ZBE6	2.5...6mm	10 x 3	0459500000
ZB10	2.5...10mm	10 x 3	1261300000
ZB16	2.5...16mm	10 x 3	0316600000
ZB35	16...35mm	10 x 3	0266500000
AK95	16...50mm	15 x 6	0364200000

Blue Insulating Cap			
ZB4	0.5...4mm	10 x 3	0475480000
ZBE6	2.5...6mm	10 x 3	0526080000
ZB16	2.5...16mm	10 x 3	0502980000
ZB35	16...35mm	10 x 3	0502780000

Green / Yellow Insulating Cap			
ZB4	0.5...4mm	10 x 3	0475460000
ZBE6	2.5...6mm	10 x 3	0526060000
ZB16	2.5...16mm	10 x 3	0502960000

Support Blocks

Type	Size (mm)	Part No.
SH1 Complete	10 x 3 or 12 x 2 or 15 x 2	0299860000
SH1 Socket	10 x 3 or 12 x 2 or 15 x 2	0401460000
SH1 Yoke	10 x 3 or 12 x 2 or 15 x 2	0635960000
SH1 Fixing screw M4 x 9		0103300000
SH2 S	10 x 3 or 15 x 6	0641720000
SH3	10 x 3	0556660000



Low Voltage Insulators

Made from polyamide material reinforced with glass fibre and Halogen Free and self extinguishing to UL94V0, IEC 60439.1. Working temperature: -40°C to +130°C

Insulators

Type	Diameter (mm)	Height (mm)	Thread	Part No.
ISO20M4	15	20	M4	548410
ISO20M6	15	20	M6	548420
ISO25M5	18	25	M5	548700
ISO25M6	18	25	M6	548430
ISO30M6	26	30	M6	548440
ISO30M8	26	30	M8	548450
ISO35M6L	34	35	M6	548470
ISO35M8	34	35	M8	548480
ISO35M10	34	35	M10	548490
ISO40M6	40	40	M6	548500
ISO40M8	40	40	M8	548510
ISO40M10	40	40	M10	548520
ISO50M6	41	50	M6	548570
ISO50M8	41	50	M8	548580
ISO50M10	41	50	M10	548590
ISO60M8	44	60	M8	548600
ISO60M10	44	60	M10	548610
ISO70M12	52	10	M12	548620
ISO70M16	52	10	M16	548630
ISO80M12	52	80	M12	548660
ISO80M16	52	80	M16	548670
ISO100M12	46	100	M12	548680

Single Pole Distribution Blocks

The Erico single pole distribution blocks can be mounted on TS35 DIN rail or base mounted using 2 x M5 screws. They have an IP20 rating.

Single Pole

Type	Rating Amps	Cable Size (mm ²)		Part No.
		Input	Output	
UD80A	80	6...16	4 x 2.5...6 2 x 2.5...16	569010
UD125A	125	10...35	6 x 2.5...16	569020
UDJ160A	160	6...16	6 x 2.5...16	569030
UD250A	250	35...120	2 x 2.5...35 5 x 2.5...16 4 x 2.5...10	569040
UD400A	400	95...185	2 x 2.5...35 5 x 2.5...16 4 x 2.5...10	569050
UDF500A*	500	Accepts flexibar from 4 x 15.5...6 x 24 (552460) (552590)	2 x 2.5...35 5 x 2.5...16 4 x 2.5...10	569060

* For flexibars see page 6.13

Accessories

Type	For Terminal Block	Part No.
Jumper / Plug	UDJ125A-UDJ160A	569150
FLG 250 brass connection lug	UD250	569160
FLG 400 brass connection lug	UD400	569170

Two and Four Pole Distribution blocks

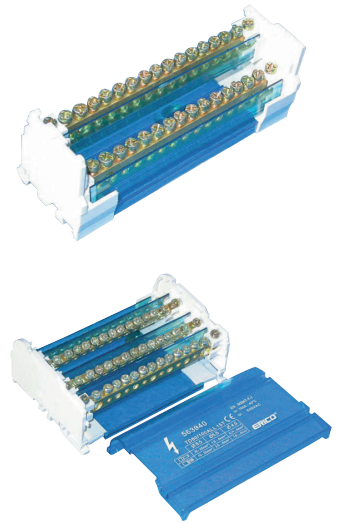
A range of DIN rail mounting distribution blocks. Manufactured from self extinguishing V0 material, each block comes complete with a protective transparent cover.

Protection: Transparent cover
Self extinguishing: UL94 V-0

Single Pole

Type	Rating Amps	No. Outputs Per Pole	Cable Size (mm ²) Input	H (mm)	W (mm)	D (mm)	Part No.
BD40A	40	15	4...10	50	130	50	563720
BD80/100A	100	6	10...25	50	64	50	563900
BD80/100AL	100	14	10...25	50	130	50	563910
BD100/125A	125	6	10...35	50	130	50	563800
BD100/125AL	125	14	10...35	50	130	50	563810
4 Pole							
TD40A	40	12	4...10	90	100	50	563740
TD80/100A	100	6	10...25	90	64	50	563920
TD80/100AL	100	10	10...25	90	100	50	563930
TD80/100ALL	100	14	10...25	90	130	50	563940
TD100/125A	100	6	10...35	90	109	50	563820
TD100/125AL	125	10	10...35	90	147	50	563830
TD100/125LL	125	14	10...35	90	147	50	563840
TD160AL	160	11	10...35	90	182	50	563990

ERIFLEX



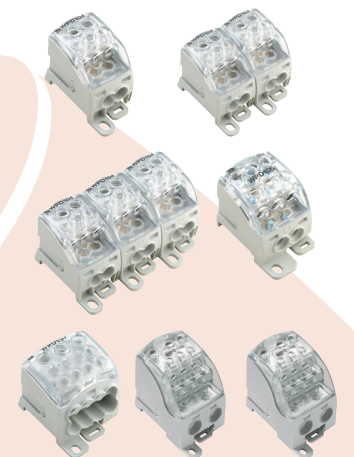
Phase Distributor Blocks

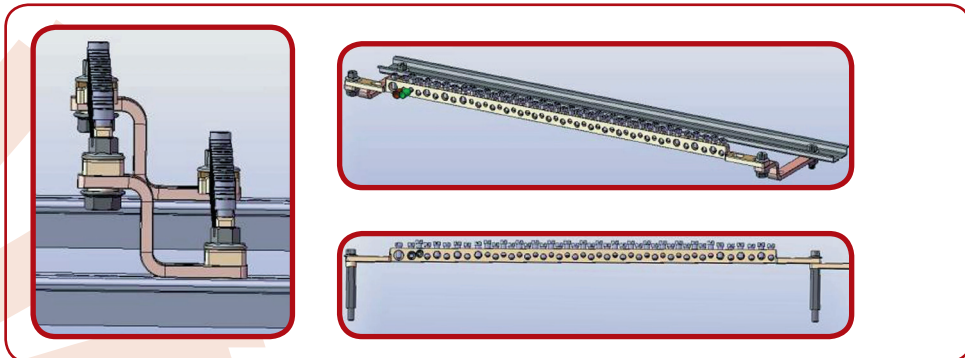
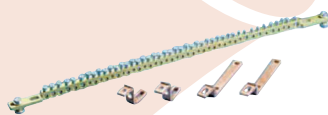
W-Series terminal blocks are optimised to guarantee both convenience and space gains, ensures a secure and convenient connection at the power feed-in.

W-Series Distribution Blocks

Description	Voltage	Current	Part No.
WPD 104 1x25+1x16/2x16+3x10 Gy	690V AC 1000V DC	101A	1562000000
WPD 204 2x25/4x16+6x10 2xGy		101A	1562150000
WPD 304 3x25/6x16+9x10 3xGy		101A	1562160000
WPD 105 1x35+1x16/2x25+3x16 Gy		125A	1562170000
WPD 205 2x35/4x25+6x16 2xGy		125A	1562180000
WPD 305 3x35/6x25+9x16 3xGy		125A	1562190000
WPD 106 1x70/2x25+3x16 Gy		160A	1562210000
WPD 107 1x95/2x35+8x25 Gy		232A	1562220000
WPD 108 1x120/2x35+3x25+4x16 Gy		250A	1562100000
WPD 109 1x185/2x35+3x25+4x16 Gy		353A	1562090000

Weidmüller





Earthing Parts

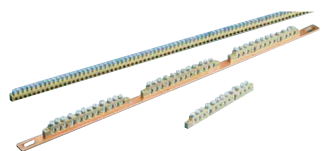
- Universal fixing
- 44 connections
- Easy connections due to chamfer
- Rigid bar
- High conductivity brass quality
- Brackets kit for easy fixing

EB 44 Earth Bar

Type	Part No.
EB 44	568660
Accessories	
EBB KDR Kit DIN rail	568665
EBB KP Kit plate	568666

Earthing and Neutral Busbar

- EB 12: earthing brass busbar 13 x 6 for 10 connections 16mm² and 2 connections 35mm²
- EB 36: earthing copper busbar 15 x 4 equipped with 3 x EB12
- EB 168: earthing brass busbar 8 x 8 for 168 connections 10mm² maxi

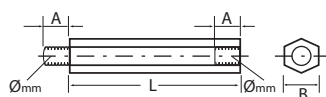
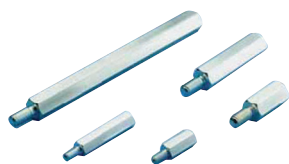


EB 12...168 Earth / Neutral Busbars

Type	Part No.
EB12	568610
EB36	568620
EB168	568630

Metallic Spacers

- Metallic hexagonal spacers
- Zinc plated steel
- To make higher plates, screens or profiles
- Male-female allowing stable mounting



Single Pole

Type	L (mm)	Ø (mm)	A (mm)	B (mm)	Part No.
DMH 10M4	10	M4	8-10	7	561560
DMH 15M4	15	M4	8-10	7	561570
DMH 20M4	20	M4	8-10	7	561580
DMH 25M4	25	M4	8-10	7	561590
DMH 30M4	30	M4	8-10	7	561600
DMH 35M4	35	M4	8-10	7	561610
DMH 40M4	40	M4	8-10	7	561620
DMH 50M4	50	M4	8-10	7	561630
DMH 60M4	60	M4	8-10	7	561640
DMH 15M5	15	M5	10	8	561660
DMH 20M5	20	M5	10	8	561670
DMH 25M5	25	M5	10	8	561680
DMH 30M5	30	M5	10	8	561690
DMH 35M5	35	M5	10	8	561700
DMH 40M5	40	M5	10	8	561710
DMH 50M5	50	M5	10	8	561720
DMH 60M5	60	M5	10	8	561730
DMH 70M5	70	M5	10	8	561740
DMH 80M5	80	M5	10	8	561750
DMH 15M6	15	M6	12	8	561760
DMH 20M6	20	M6	12	8	561770
DMH 30M6	30	M6	12	8	561780
DMH 40M6	40	M6	12	8	561790
DMH 50M6	50	M6	12	8	561800
DMH 60M6	60	M6	12	8	561810
DMH 70M6	70	M6	12	8	561820
DMH 80M6	80	M6	12	8	561830
DMH 90M6	90	M6	12	8	561840
DMH 100M6	100	M6	12	8	561850